



smarthomes

Hertford Way

Knowle, Solihull

- A Well Presented Two Bedroom Family Home
- Re-Fitted Kitchen & Family Shower Room
- Private Southerly Facing Rear Garden
- Two Allocated Parking Spaces

Guide Price £350,000

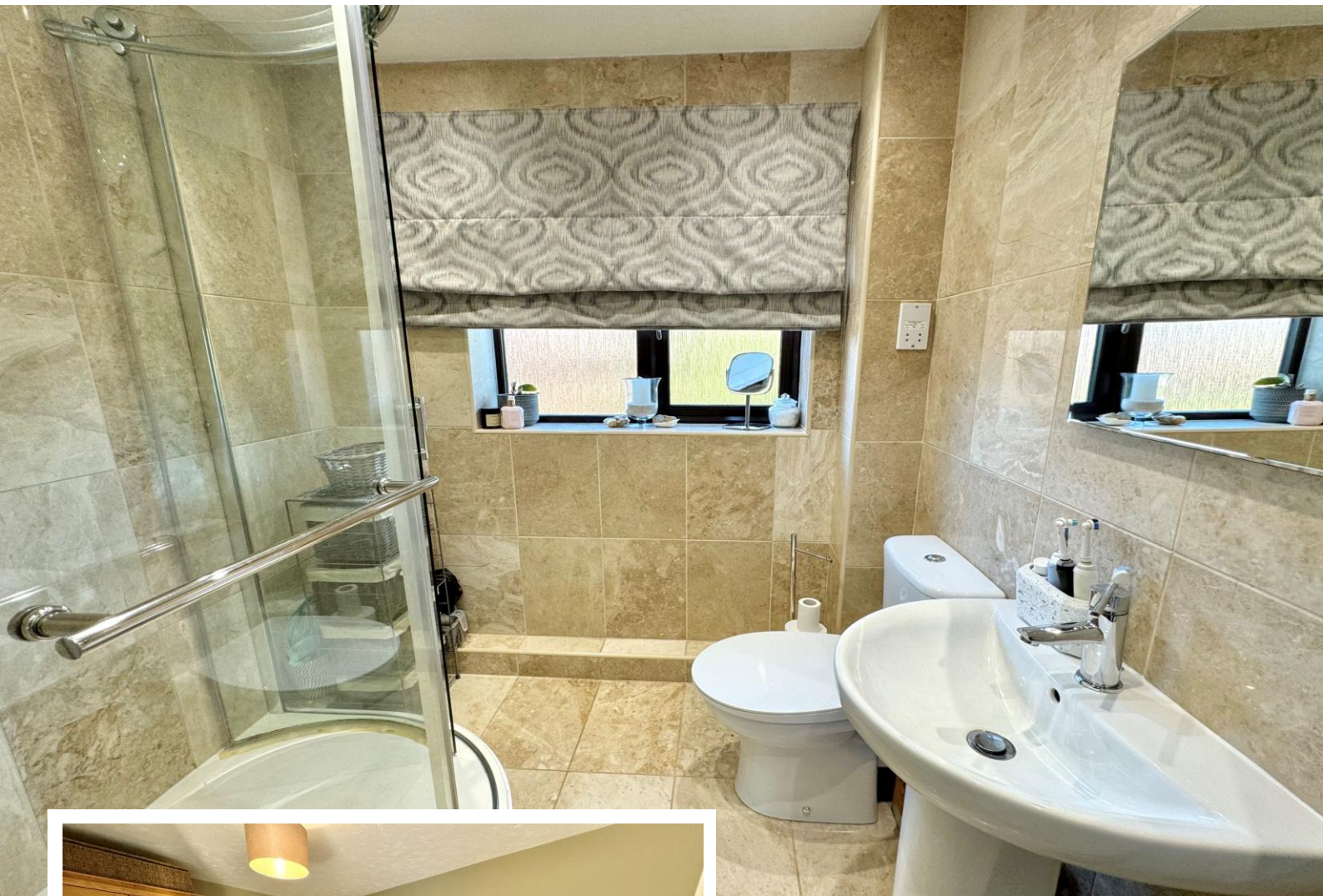
Current EPC Rating - C
Current Council Tax Band - D





Property Description

A well presented end-terrace property situated in a most sought after location and offering potential for extension subject to planning consent. With accommodation comprising a re-fitted kitchen/diner, lounge, two bedrooms, re-fitted family shower room, private Southerly facing rear garden and two parking spaces



Rooms & Measurements

Re-Fitted Kitchen/Diner to Front 3.15m x 2.82m (10'4" x 9'3")

Lounge to Rear 3.86m max x 3.86m max (12'8" max x 12'8" max)

Bedroom One to Front 4.27m x 2.87m (14'0" x 9'5")

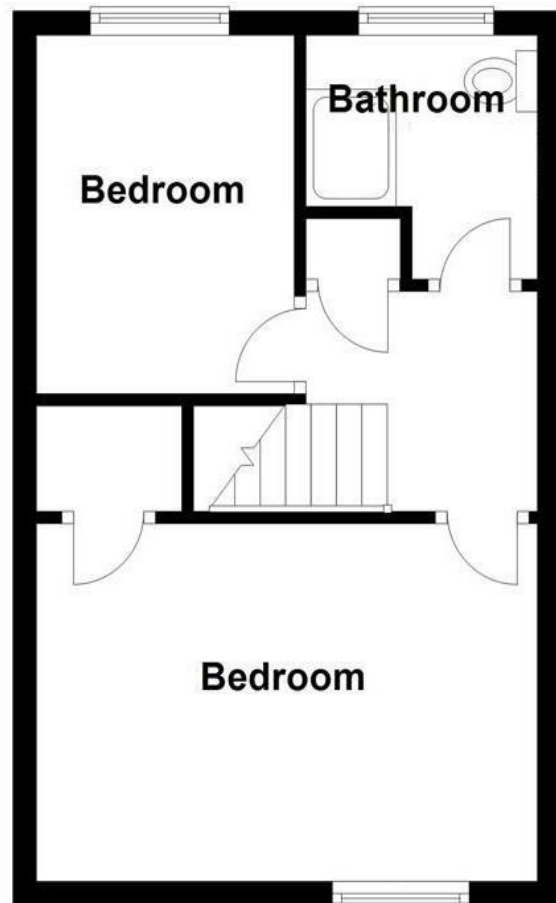
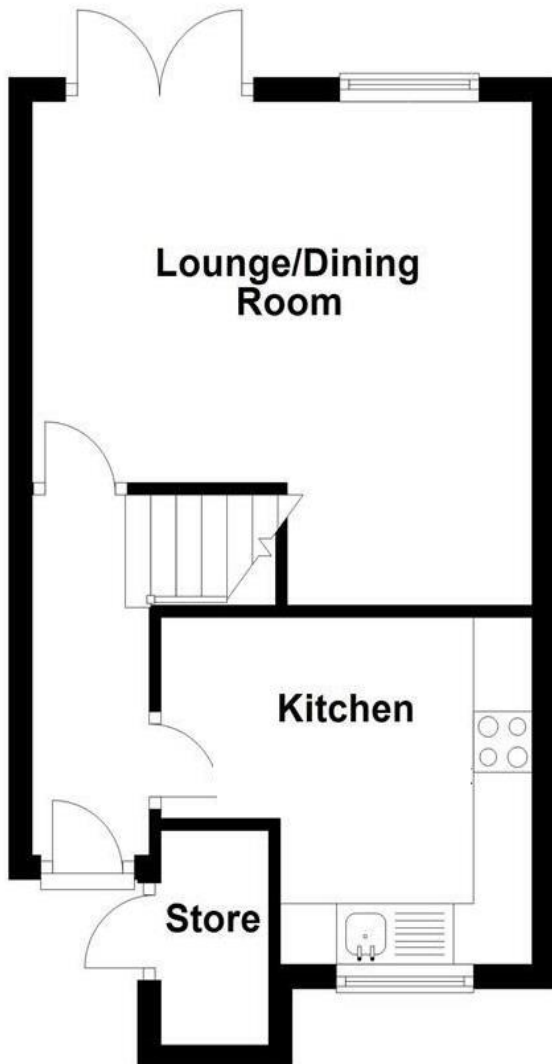
Bedroom Two to Rear 3.15m x 2.18m (10'4" x 7'2")

Re-Fitted Family Shower Room to Rear 2.24m max x 1.96m max (7'4" max x 6'5" max)

Tenure

We are advised by the vendor that the property is freehold. We would advise all interested parties to obtain verification through their own solicitor or legal representative.

EPC supplied by vendor. Current council tax band – D



316 Stratford Road
Shirley
Solihull
B90 3DN

www.smart-homes.co.uk
0121 744 4144

Agents Note: Whilst every care has been taken to prepare these particulars, they are for guidance purposes only. We believe all information to be correct from the day of marketing however, we advise and recommend that your conveyancer and or surveyor verifies all information supplied. All measurements are approximate are for general guidance purposes only and whilst every care has been taken to ensure their accuracy, they should not be relied upon and potential buyers are advised to recheck the measurements.