



smarthomes

Fords Road

Majors Green, Solihull

- A Beautifully Presented Two Bedroom Semi-Detached Bungalow
- Re-Fitted Kitchen & Shower Room
- Landscaped East Facing Rear Garden
- Delightful Conservatory

£415,000

Current EPC Rating - C
Current Council Tax Band - D





Property Description

A very well presented semi detached bungalow situated in a convenient location with accommodation briefly affording two bedrooms, lounge diner with modern fitted kitchen off, delightful conservatory, shower room, garage, landscaped rear garden and off-road parking



Rooms & Measurements

Lounge Diner 7.01m max x 3.76m max (23'0" max x 12'4" max)

Conservatory 3.56m x 3.25m (11'8" x 10'8")

Kitchen 3.33m x 2.57m (10'11" x 8'5")

Bedroom One to Front 4.34m x 3.07m (14'3" (max) x 10'1")

Bedroom Two to Side 3.05m x 3.33m (10'0" x 10'11")

Re-Fitted Shower Room to Side 2.24m x 2.44m (7'4" x 8'0")

Garage 5.26m x 2.44m (17'3" x 8'0")

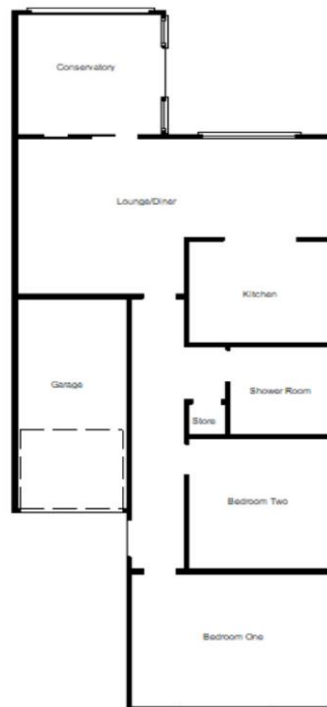
Tenure

We are advised by the vendor that the property is freehold. We would advise all interested parties to obtain verification through their own solicitor or legal representative.

EPC supplied by vendor.

Current council tax band – D





316 Stratford Road
Shirley
Solihull
B90 3DN

www.smart-homes.co.uk
0121 744 4144

Agents Note: Whilst every care has been taken to prepare these particulars, they are for guidance purposes only. We believe all information to be correct from the day of marketing however, we advise and recommend that your conveyancer and or surveyor verifies all information supplied. All measurements are approximate are for general guidance purposes only and whilst every care has been taken to ensure their accuracy, they should not be relied upon and potential buyers are advised to recheck the measurements.