



smarthomes

Highters Road

Maypole, Birmingham

- An Extremely Well Presented Semi-Detached Family Home
- Three Double Bedrooms
- Sunny South/Westerly Facing Rear Garden
- No Upward Chain

£225,000

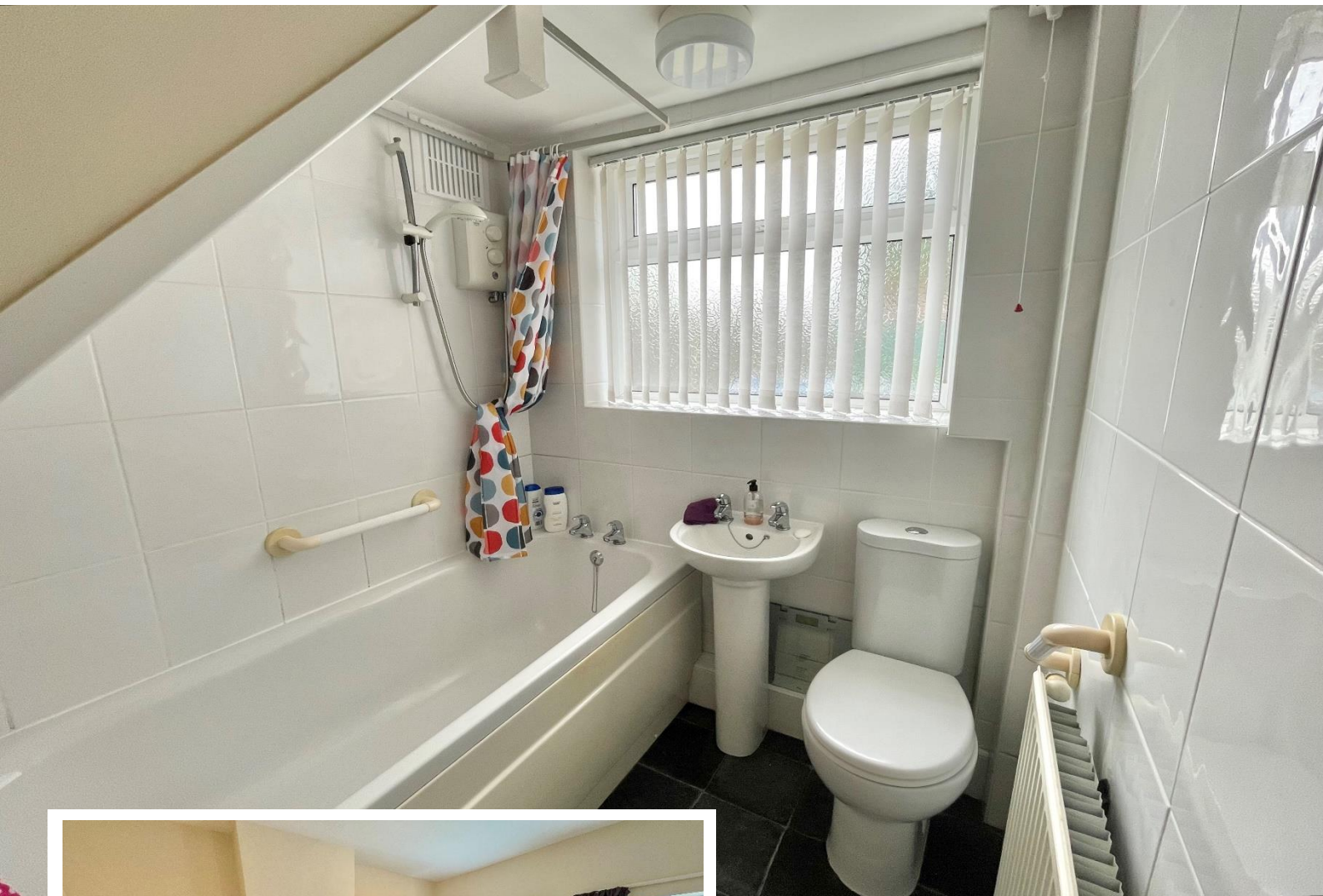
Current EPC Rating - C
Current Council Tax Band - B





Property Description

An extremely well presented semi-detached family home situated in a most convenient location and being sold with the benefit of no upward chain. Offering spacious accommodation comprising a welcoming entrance hallway, light & airy lounge/diner, fitted breakfast kitchen, modern family bathroom, three double bedrooms, a sunny South/Westerly facing rear garden and ample driveway parking



Rooms & Measurements

Light & Airy Lounge/Diner to Front 5.84m x 4.09m max (19'2" x 13'5" max)

Fitted Breakfast Kitchen to Rear 3.96m x 2.97m (13'0" x 9'9")

Modern Family Bathroom 1.68m x 1.65m (5'6" x 5'5")

Bedroom One to Front 3.94m x 3.45m (12'11" x 11'4")

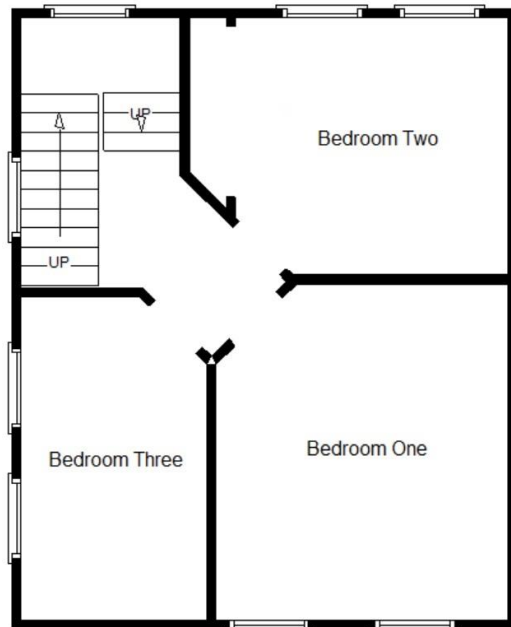
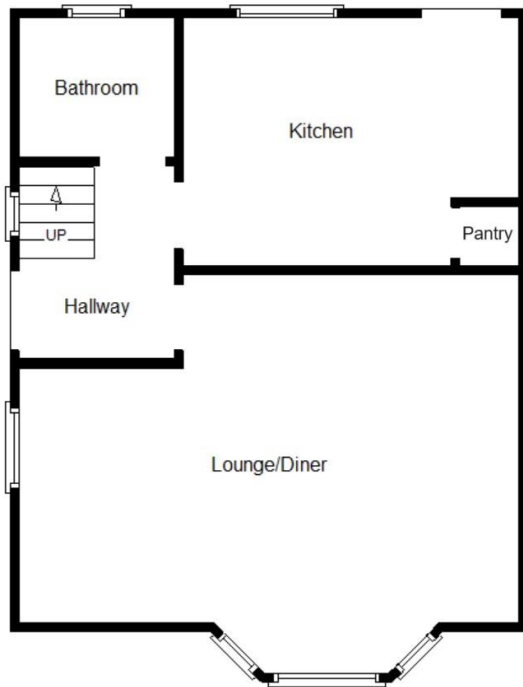
Bedroom Two to Rear 3.61m x 2.67m (11'10" x 8'9")

Bedroom Three to Side 3.81m x 2.24m (12'6" x 7'4")

Tenure

We are advised by the vendor that the property is freehold. We would advise all interested parties to obtain verification through their own solicitor or legal representative.

EPC supplied by vendor. Current council tax band – B



316 Stratford Road
 Shirley
 Solihull
 B90 3DN

www.smart-homes.co.uk
 0121 744 4144

Agents Note: Whilst every care has been taken to prepare these particulars, they are for guidance purposes only. We believe all information to be correct from the day of marketing however, we advise and recommend that your conveyancer and or surveyor verifies all information supplied. All measurements are approximate are for general guidance purposes only and whilst every care has been taken to ensure their accuracy, they should not be relied upon and potential buyers are advised to recheck the measurements.