



smarthomes

## Vine Lane

Acocks Green, Birmingham

- A Beautifully Presented Three Bedroom Family Home
- Lovely Re-Fitted Kitchen
- Spacious Lounge & Dining Room
- Family Bathroom & Guest W.C

**£280,000**

Current EPC Rating - C  
Current Council Tax Band - C





## Property Description

A beautifully presented end-terrace family home situated in a discreet courtyard location and offering accommodation comprising a spacious lounge, dining room, lovely re-fitted kitchen, guest W.C, three good size bedrooms, modern family bathroom, rear garden and off road parking



## Rooms & Measurements

Attractive Lounge Diner to Front - 5.05m x 3.76m (16'7" x 12'4")

Dining Room to Rear - 3.43m x 2.46m (11'3" x 8'1")

Re-Fitted Kitchen to Rear - 3.45m x 2.21m (11'4" x 7'3")

Bedroom One to Rear - 4.01m x 2.74m (13'2" x 9'0")

Bedroom Two to Front - 3.58m x 2.26m (11'9" x 7'5")

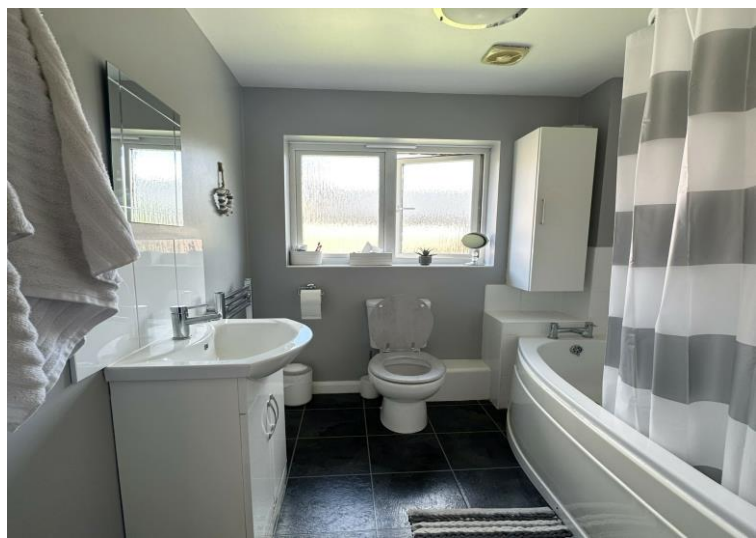
Bedroom Three to Front - 3.05m x 2.44m (10'0" x 8'0")

Family Bathroom to Rear - 1.93m x 1.93m (6'4" x 6'4")

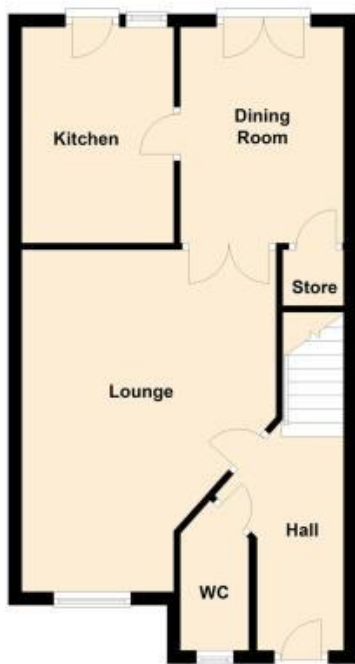
### Tenure

We are advised by the vendor that the property is freehold. We would advise all interested parties to obtain verification through their own solicitor or legal representative. EPC supplied by vendor.

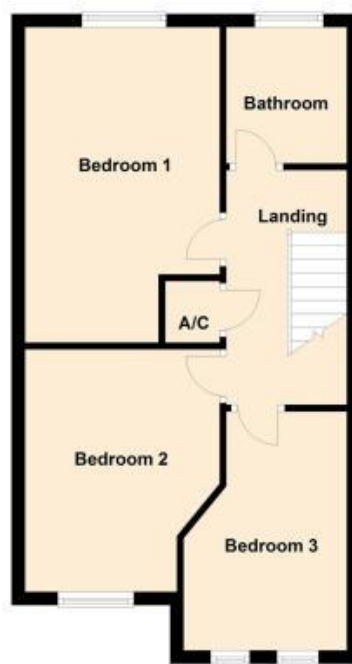
Current council tax band – C



**Ground Floor**



**First Floor**



316 Stratford Road  
 Shirley  
 Solihull  
 B90 3DN

[www.smart-homes.co.uk](http://www.smart-homes.co.uk)  
 0121 744 4144

Agents Note: Whilst every care has been taken to prepare these particulars, they are for guidance purposes only. We believe all information to be correct from the day of marketing however, we advise and recommend that your conveyancer and or surveyor verifies all information supplied. All measurements are approximate and are for general guidance purposes only and whilst every care has been taken to ensure their accuracy, they should not be relied upon and potential buyers are advised to recheck the measurements.