



smart-homes.co.uk
0121 744 4144 opt 2
shirley@smart-homes.co.uk

Campden Green, Solihull

Offers Over £250,000

🛏️ 3 🚿 1 🚻 1

- A Spacious End-Terrace Family Home
- Situated on a Large Corner Plot
- No Upward Chain
- Kitchen/Diner
- Westerly Facing Rear Garden
- Requiring Updating Throughout
- Three Good Size Bedrooms
- Spacious Lounge
- Family Bathroom
- Large Front Garden with Off Road Parking



A spacious end-terrace family home situated on a versatile corner plot requiring modernisation but benefiting from no upward chain. Offering accommodation comprising a spacious lounge, kitchen/diner, three good size bedrooms, family bathroom, Westerly facing rear garden, gardeners W.C and driveway parking

Lounge to Front - 5.7m x 3.5m (18'8" x 11'5")

Dining Kitchen to Rear - 4.4m x 3.9m (14'5" x 12'9")

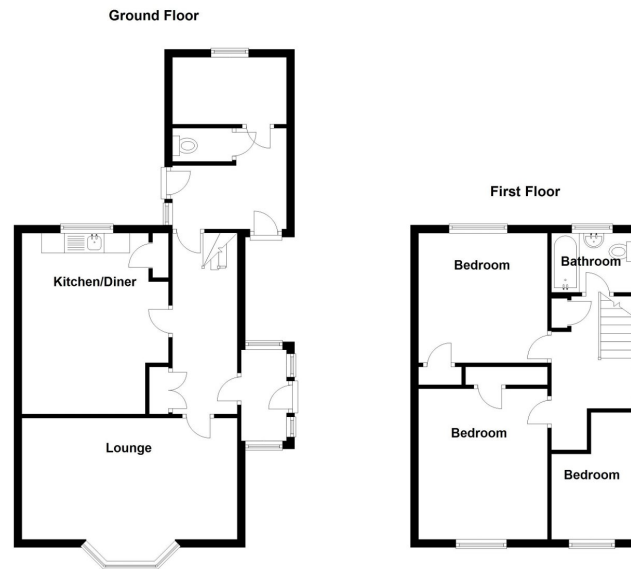
Bedroom One to Rear - 3.9m x 3.28m (12'9" x 10'9")

Bedroom Two to Front - 3.2m x 3m (10'5" x 9'10")

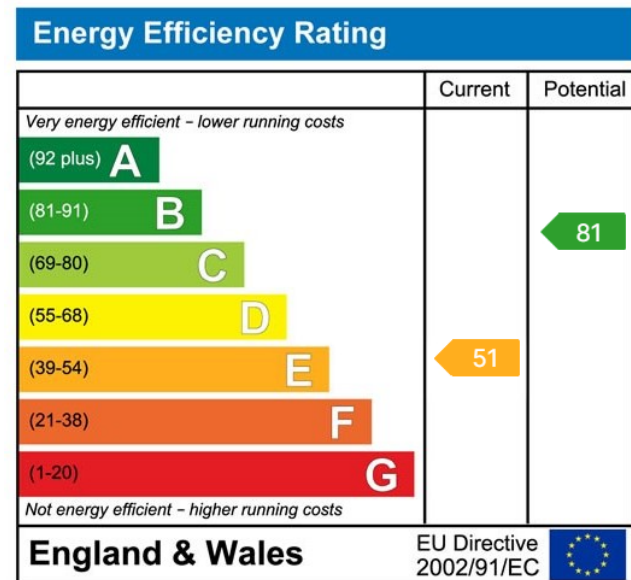
Bedroom Three to Front - 3m max x 2.4m (9'10" max x 7'10")

Family Bathroom - 2.4m x 1.7m (7'10" x 5'6")





Total area: approx. 99.0 sq. metres (1065.1 sq. feet)



316 Stratford Road, Shirley, Solihull B90 3DN

sales • new homes • land • commercial • mortgages • auction

Registered Company in England and Wales. Company No 03591917
Registered Office: JHS Ltd, 316 Stratford Road, Shirley, Solihull B90 3DN