



S

THE STORY OF

# Beachamwell House

*Swaffham, Norfolk*

SOWERBYS





THE STORY OF

# Beachamwell House

Beachamwell Road, Swaffham, Norfolk  
PE37 8BF

---

Approximately  $\frac{3}{4}$  Acre Plot with Field Views

Five Versatile Reception Rooms

Double Garage and Car Port

Six Double Bedrooms and Five  
Bathrooms Over Three Floors

Easy Access to Town Centre Amenities

Over 3,800 Sq. Ft. of Accommodation

Open-Plan and Bespoke Kitchen  
with Granite Countertops

Utility Room and Ground Floor WC

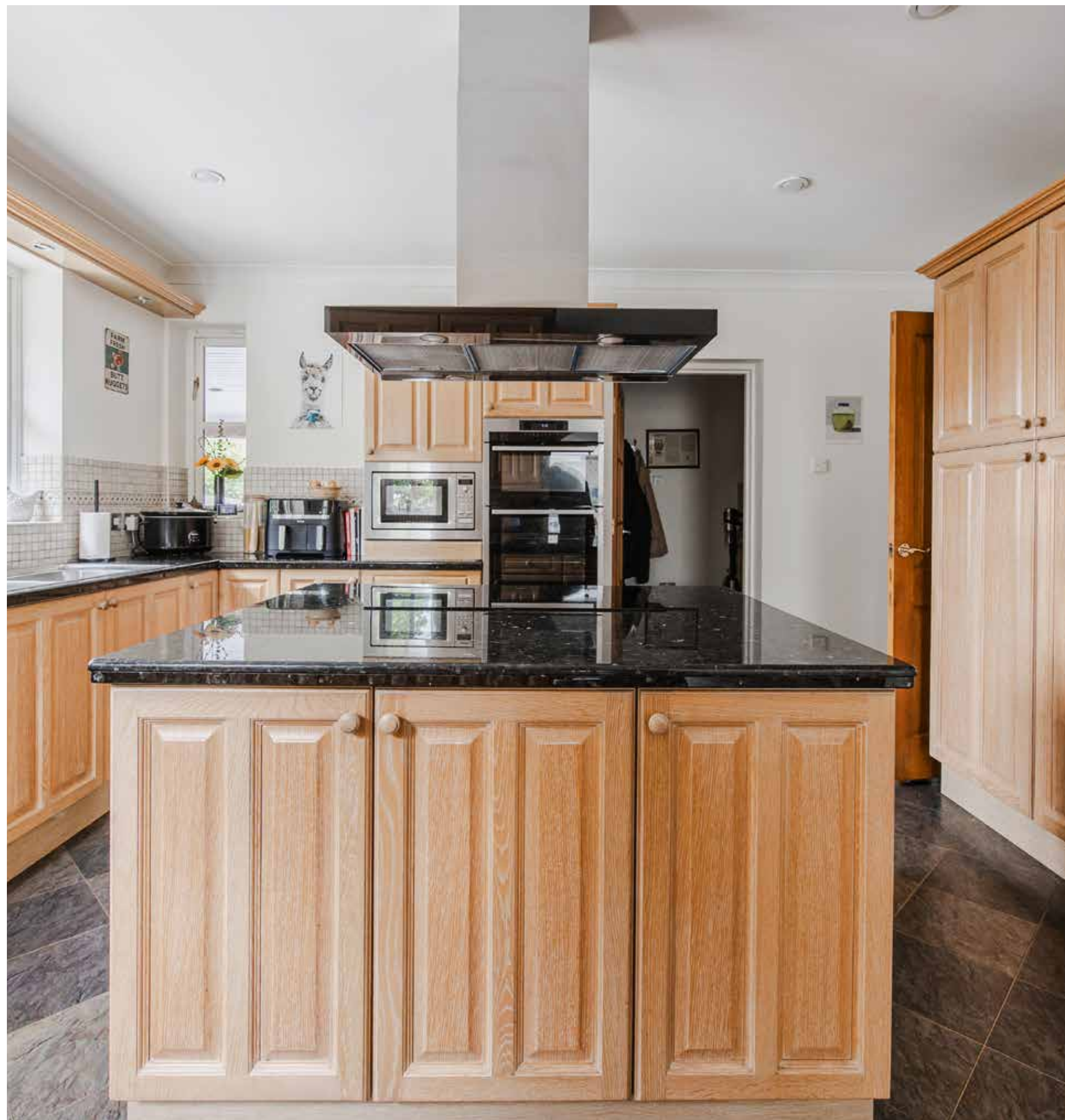
Quiet, Out of Town Location

---

**SOWERBYS DEREHAM OFFICE**

01362 693591

dereham@sowerbys.com







Set on a generous three-quarter acre plot (STMS) with far-reaching field views, Beachamwell House offers a lifestyle that blends space, flexibility, and privacy, all within easy reach of Swaffham's town centre.

This substantial home delivers over 3,800 square feet of well-considered accommodation across three floors, making it ideal for modern family living or those needing room to grow, work, and entertain. The layout offers five reception rooms, allowing for adaptable uses - whether you need dedicated workspaces, a media lounge, a playroom, or a formal dining area, the space is here to configure as life evolves.

At the heart of the home is a bespoke open-plan kitchen, finished with granite worktops and designed for both everyday function and social connection. It flows naturally into the living areas, making it just as suited to quiet mornings as it is to hosting friends. A practical utility room and ground floor WC complete the essentials for a well-run household. In addition, the property offers a cellar for extra storage facilities.

Upstairs, six double bedrooms and five bathrooms are spread comfortably across the upper levels, providing ample space for family members and guests alike. Whether it's multi-generational living or accommodating visitors, there's room for everyone.













Outside, the setting is both peaceful and practical. The grounds offer the sense of space and calm that comes with a rural edge-of-town position, while still keeping amenities within easy reach. A double garage, car port, and plentiful parking ensure convenience without compromise.

Beachamwell House brings together the advantages of a quiet, out-of-town location with the scale and flexibility to support a full, modern lifestyle.







FLOORPLAN TO BE ADDED



Whilst every attempt has been made to ensure the accuracy of the floor plan contained here, measurements of doors, windows, rooms and any other items are approximate and no responsibility is taken for any error, omission, or mis-statement. This plan is for illustrative purposes only and should be used as such by any prospective purchaser or tenant. The services, systems and appliances shown have not been tested and no guarantee as to their operability or efficiency can be given.

Copyright V360 Ltd 2025 | [www.houseviz.com](http://www.houseviz.com)



# Swaffham

AN HISTORIC MARKET TOWN  
WITH A LINK TO EGYPT...

An historic and thriving market town, Swaffham is situated approximately 15 miles east of King's Lynn and approximately 30 miles from Norwich.

There is an extensive range of local amenities including a Waitrose, Tesco, Asda, further shops, pubs and restaurants, three doctors surgeries and primary, secondary and higher schools together with a variety of leisure and sports activities including an excellent golf club.

The town has an extremely popular Saturday market and many interesting historic buildings including the parish church and 'The Buttercross'.

There's also a town museum which focuses on many different and impressive parts of local history. One key gallery is The Carter Centenary, a chance to learn about Howard Carter, famous for the 1922 discovery of the tomb of Tutankhamun - whose extended family lived in Swaffham.

The town offers a great hub for those who wish for a perfect family life. It has a series of schools for different ages, along with being relatively close to other schools including Greshams, Langley Hall and Beeston Hall School

It's also a good base to call home with local activities and entertainment including theatre, open gardens, nature reserves and more.

Swaffham is only around two hours by train to London, with great access to Cambridge and a short journey to Holt, Wells, Brancaster and Burnham Market - as well as the popular little seaside town of Sheringham. Norwich too is quick trip and provides an airport, offering direct flights to Amsterdam.



## Note from Sowerbys



The home enjoys far-reaching field views

“...the sense of space and calm that comes with a rural edge-of-town position.”



## SERVICES CONNECTED

Mains electricity, water and drainage. Gas fired central heating.

## COUNCIL TAX

Band G.

## ENERGY EFFICIENCY RATING

C. Ref:- 0370-2111-4140-2922-8551

To retrieve the Energy Performance Certificate for this property please visit <https://find-energy-certificate.digital.communities.gov.uk/find-a-certificate/search-by-reference-number> and enter in the reference number above. Alternatively, the full certificate can be obtained through Sowerbys.

## TENURE

Freehold.

## LOCATION

What3words: ///firebird.skylights.grandest

These particulars and measurements whilst believed to be accurate, are set out as a general outline only for guidance and do not constitute any part of an offer or contract. Intending purchasers should not rely on them as statements of representation of fact, but must satisfy themselves by inspection or otherwise as to their accuracy. No person in this firm's employment has the authority to make or give representation or warranty in respect of the property.



# SOWERBYS

We are proudly supporting these Norfolk charities by organising and participating in events throughout 2025, along with making a donation for every home we sell.



Sowerbys Estate Agents Limited is a company registered in England and Wales, company no: 05668606.  
Registered office 54 Westgate, Hunstanton, Norfolk, PE36 5EL

