



S

THE STORY OF
Glendower House

Dereham, Norfolk

SOWERBYS



THE STORY OF

Glendower House

Dereham, Norfolk
NR19 1AE

Striking Victorian Character

Multiple Reception Rooms

Elegant Bedrooms with Fireplaces

Well-Appointed Kitchen with Rangemaster

Two Self-Contained Annexes

Home Office with Beautiful
Stained Glass Window

Ample Parking and Double Garage

Charming Outdoor Spaces with a
Fountain and Bench to the Front

Flexible Layout

SOWERBYS DEREHAM OFFICE

01362 693591

dereham@sowerbys.com





Nestled just a short stroll from Dereham's town centre, Glendower House is a striking Victorian property that blends timeless character with elegance. Approached via an impressive driveway with wrought iron gates, this handsome home boasts a beautiful red brick facade, complete with sash windows and a classic porticoed entrance. A charming front garden, complete with a fountain and bench, provides a peaceful spot to enjoy morning coffee in the sunshine.

The house retains an abundance of original features, including elegant fireplaces—found in several bedrooms—picture rails, and a stunning original staircase. A beautiful stained-glass window enhances the character of the office, while high ceilings and period details throughout create a grand atmosphere. The spacious layout offers flexibility for modern living, with multiple reception rooms, including a sitting room, drawing room, and a dining room with panelled walls and a fireplace. At the end of the dining room, a bright sunroom overlooks the garden, offering a wonderful space to relax.

The well-appointed kitchen, which enjoys views of the rear garden and heated plinths for added comfort. A Rangemaster adds to the charm, making this a welcoming space for cooking and gathering.





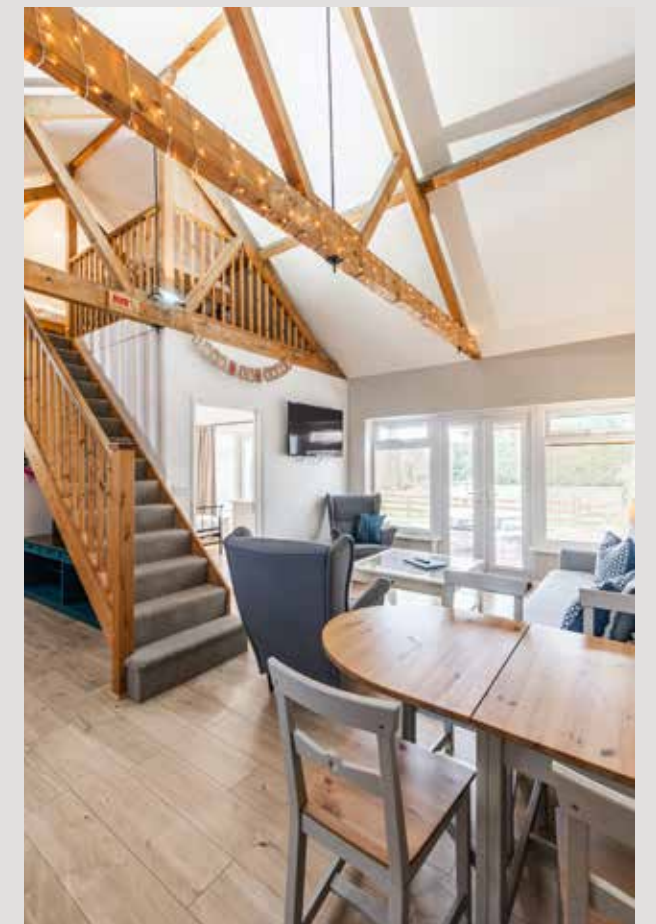


The house retains an abundance of original features, including elegant fireplaces—found in several bedrooms—picture rails...



Glendower House benefits from two self-contained annexes, each with its own entrance, both opening into a private courtyard section of the garden. The dining room also has an additional entrance, which could be blocked off if a fully self-contained layout is preferred. The boiler room provides a practical utility space, housing washing machines.

The generous garden extends to the rear, offering a private retreat, while ample parking is available to the left-hand side of the driveway, leading to a double garage. With its flexible layout, rich character, and thoughtful updates, Glendower House is a truly special home ready to be cherished by its next owner.





Whilst every attempt has been made to ensure the accuracy of the floor plan contained here, measurements of doors, windows, rooms and any other items are approximate and no responsibility is taken for any error, omission, or mis-statement. This plan is for illustrative purposes only and should be used as such by any prospective purchaser or tenant. The services, systems and appliances shown have not been tested and no guarantee as to their operability or efficiency can be given.

Copyright V360 Ltd 2025 | www.houseviz.com

Dereham

LOCATED IN THE
MIDDLE OF NORFOLK

Nestled in the Brecklands, Dereham is a classic country market town with Georgian architecture and more recent developments.

In the eighth century, Anna, King of East Anglia's youngest daughter, founded a nunnery and prayed for a miracle during a famine. Two deer appeared daily, providing milk. When a huntsman tried to capture them, he was killed after being thrown from his horse, believed to be divine retribution. This event is depicted on a town sign at the entry to Butter Market from the High Street.

Today, Dereham boasts a twice-weekly market on Tuesdays and Fridays, numerous independent shops, and free parking, making it a great spot for an afternoon browse. Notable landmarks include the Mid-Norfolk Railway, running 1950s railcars to Wymondham Abbey, the Grade II listed Dereham Windmill, and Bishop Bonner's Cottage, the oldest building in town, established in 1502.

Nearby attractions for heritage enthusiasts include Gressenhall Farm and Workhouse, Castle Acre Castle and Priory, and the National Trust property Oxburgh Hall, all within a short drive.

For dining, try Spice Fusion curry house or The George Hotel, Bar and Restaurant, known for its excellent accommodation, food, and award-winning drinks. Brisley, 6.5 miles away, hosts The Brisley Bell, a highly acclaimed pub, while The Old Dairy in Stanfield offers artisan bread and produce.

With good local schools, a leisure centre, and a golf course, Dereham and its surrounding villages provide an ideal blend of Norfolk country living with easy access to Norwich and the coast at Wells-next-the-Sea, just 22 miles away. Discover this Norfolk gem.



SERVICES CONNECTED

Mains water, electricity and drainage. Gas fired central heating.

COUNCIL TAX

Band F.

ENERGY EFFICIENCY RATING

Glendower House: F. Ref:- 8794-7429-3169-5026-0922

Annexe: C. Ref:- 8354-7429-3319-1036-0922

To retrieve the Energy Performance Certificates for this property please visit <https://www.epcregister.com/> and enter in the reference numbers above.

TENURE

Freehold.

LOCATION

What3words: ///financial.chopper.making

AGENT'S NOTE

It should be noted that the residents of Glendower Court have a right of way over the northern entrance to the house, and parking to the side of the driveway. The Mews properties are being sold separately.

These particulars and measurements whilst believed to be accurate, are set out as a general outline only for guidance and do not constitute any part of an offer or contract. Intending purchasers should not rely on them as statements of representation of fact, but must satisfy themselves by inspection or otherwise as to their accuracy. No person in this firm's employment has the authority to make or give representation or warranty in respect of the property.

SOWERBYS

We are proudly supporting these Norfolk charities by organising and participating in events throughout 2025, along with making a donation for every home we sell.



Sowerbys Estate Agents Limited is a company registered in England and Wales, company no: 05668606.
Registered office 54 Westgate, Hunstanton, Norfolk, PE36 5EL

