



Garden House & The Orangery Annexe Erbistock, Wrexham, LL13 0DL
Guide Price £1,000,000

**BAKER
WYNNE &
WILSON**

A rare find occupying an idyllic position in the village of Erbistock, elevated above the Banks of the River Dee - An expansive four/five bedroom elegantly proportioned and a particularly handsome detached country residence, circa 1992. The house extends to 240.7m² with an addition 67.8m² provided by the detached one bedroom 'orangery' annexe. Total gross internal area of both properties approx. 332 square feet. Magnificent landscaped garden plot 2.5 acres or thereabouts.

Suitable for upgrading and extension /modification subject to any necessary consents.

GENERAL REMARKS

Comment by Mark Johnson FRICS & Baker, Wynne & Wilson

The Garden House was constructed in 1992 and provides a very handsome and elegant country residence standing in fabulous, landscaped gardens which extend to about 2.5 acres. The well-proportioned family accommodation features a spacious Entrance Hall with French limestone flooring and oak staircase, Drawing Room with French windows to garden, farmhouse style Kitchen, utility room, rear lobby and fifth bedroom on the ground floor. Off the spacious first floor landing there are a further four bedrooms and three bathrooms.

As the name suggests, the fabulous gardens are a particular feature of the property having been laid out in formal style with mature scalloped and topiary hedging dividing the garden area into various compartments. It features various sculpture courts and charming Victorian dovecote.

LOCATION

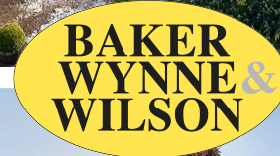
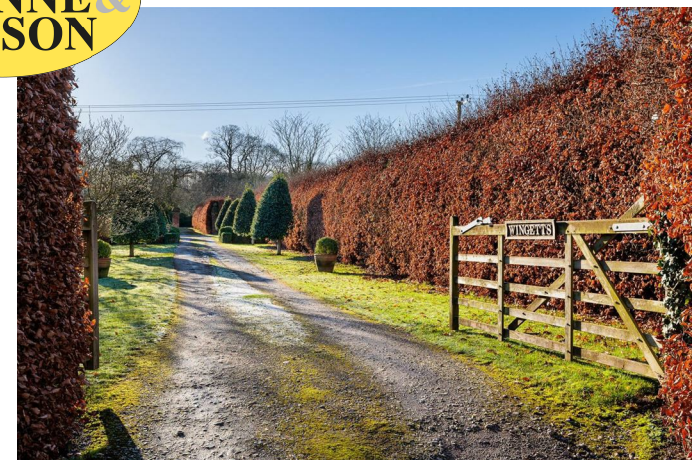
The Garden House occupies a prominent position within the picturesque, riverside village of Erbistock, which boasts two very well-known riverside pubs. The area enjoys excellent road links via the A483 to the national motorway network and nearby towns include Wrexham (6miles), Chester (21.3miles) and Shrewsbury (25miles). There are well regarded schools nearby in Overton-on-Dee (primary) and Penley (secondary) together with a number of good private schools within easy daily travelling distance.

The sale of The Garden House provides a rare opportunity to acquire a stylish family house standing in fabulous gardens within the highly sort after rural village of Erbistock.

The main house offers well-proportioned family accommodation of style and character, with high corniced ceilings throughout. It briefly comprises:

Approx. Gross Internal Area 240.7m²(2591ft²).

GROUND FLOOR



ENTRANCE HALL

27'7" x 7'11"

Approached via wide oak doorway with stone quoined surrounds, the spacious hallway has Italian tiled floor and staircase with half-landing and oak balustrade leading to the first floor. Two covered radiators.

LIVING ROOM

17'10" x 17'9"

Featuring a Belgian fossil marble fireplace and French windows leading onto covered outside seating area. Two covered radiators.

CLOAKROOM

7'11" x 7'9"

Furnished with wash basin set in a pine vanity unit and W.C. Covered radiator.

BREAKFAST/KITCHEN

17'10" x 17'9"

Farmhouse style kitchen having French limestone and terracotta tiled floor and oil fired four oven Aga. A range of traditional timber fronted base units, drawers and work surfaces with tiled surround and Belfast sink. Plumbing for dishwasher.

UTILITY ROOM

10'6" x 7'10"

Quarry tiled floor, Belfast sink and oil central heating boiler

BOOT ROOM

8'10" x 7'5"

Quarry tiled floor.

GROUND FLOOR BEDROOM 4/DINING ROOM

17'10" x 9'10"

Arched window and radiator.

FIRST FLOOR SPACIOUS LANDING

17'11" x 7'11"

MASTER BEDROOM NO. 1

17'11" x 17'10"

A bright spacious room with four windows and 3 radiators.

EN-SUITE BATHROOM

9'10" x 8'1"

Attractively tiled and fitted with a Victorian style suite, comprising roll top bath, twin wash hand basins and W.C.

BEDROOM NO. 2

18'0" x 17'11"

L Shaped max measurements
Three windows and two radiators.



**BAKER
WYNNE &
WILSON**



EN-SUITE BATHROOM

12'6" x 6'1"

Victorian style suite comprising slipper bath with mixer taps and hand shower, pedestal wash hand basin, W.C and bidet.

BEDROOM NO. 3

22'1" x 9'9"

Built in cylinder cupboard, two windows and two radiators.

FAMILY SHOWER ROOM

7'11" x 6'9"

Glazed shower cubicle, wash hand basin and W.C. Jack and Jill doors to Bedrooms 3 & 5

BEDROOM NO. 5

12'11" x 9'10"

Radiator.

THE ORANGERY ANNEXE

(Approx. gross internal area 730 m2/846ft2)

A detached building constructed of brick beneath a pitched, clay tiled roof which has been converted to provide the following ancillary living accommodation:

ENTRANCE HALL

39'8" x 4'9"

Flagger floor, two radiators.

OPEN PLAN LIVING/KITCHEN/DINING ROOM

30'2" x 12'7"

Wood burning stove, and fitted with a range of base units, worksurfaces, sink unit, and built-in oven/hob. PVC double glazed patio windows leading to the garden area.

BEDROOM

12'7" x 9'3"

Radiator.

BATHROOM (JACK & JILL)

12'7" x 9'3"

Fully tiled and furnished with a white 3-piece suite comprising, panelled bath with shower over, wash hand basin and W.C. Heated towel rail.

MEZZANINE

12'7" x 9'3"

Staircase from lounge area.

THE LAND

The property stands in fabulous matured landscaped gardens extending to an estimated 2.5 acres (see attached plan)

SERVICES

Mains electricity & water are connected to the property. Private drainage. Oil fired central heating. None of the services have been tested for capacity or correct functioning, potential purchasers should satisfy themselves entirely regarding these matters.

TENURE

Freehold with vacant possession on completion.

VIEWING

By appointment only through joint selling agents Jones Peckover, 61 Market Street, Abergele, Conwy, LL22 7AF - 01745 832240 - abergele@jonespeckover.com or Baker, Wynne Wilson, 38 Pepper Street, Nantwich, CW5 5AB - 01270 625214.

DIRECTIONS TO LL13 0DL

Travelling south from Wrexham take the A483 exiting at Ruabon and taking the A539 sign posted to Overton-on-Dee. Continue for about 2 miles turning right at the T-junction onto the A528 and after roughly 300 yards turn right just before Overton Bridge, sign posted to Erbistock Church. Continue down the lane for about half a mile and the entrance to The Garden House will be seen on the righthand side by a high beach hedge.

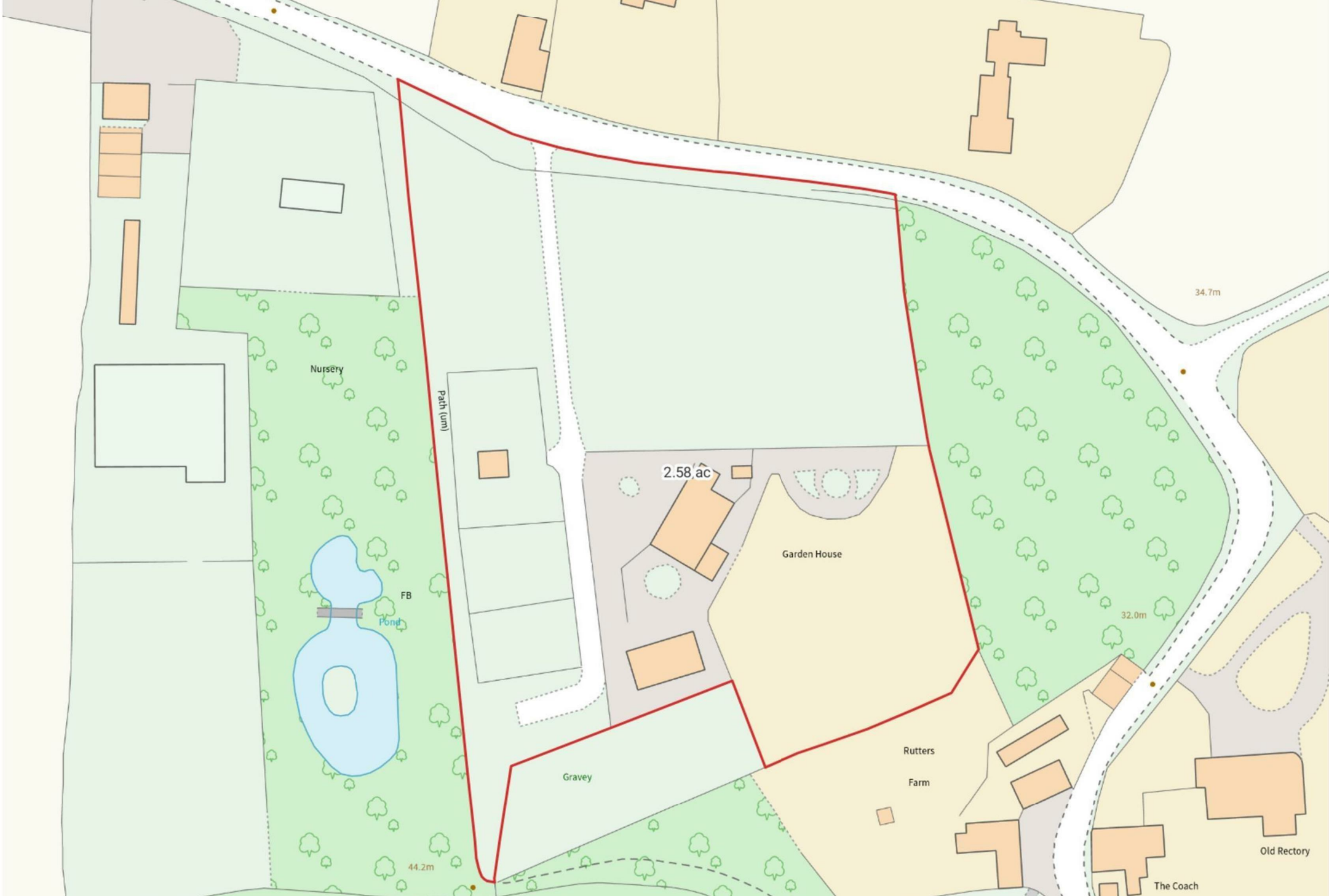


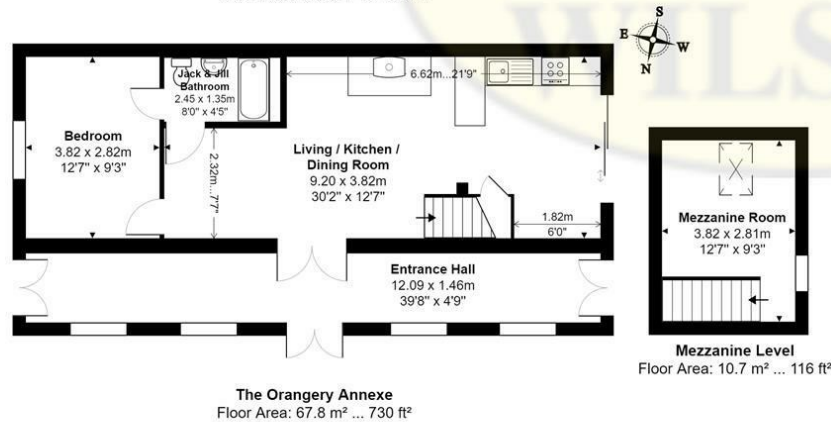
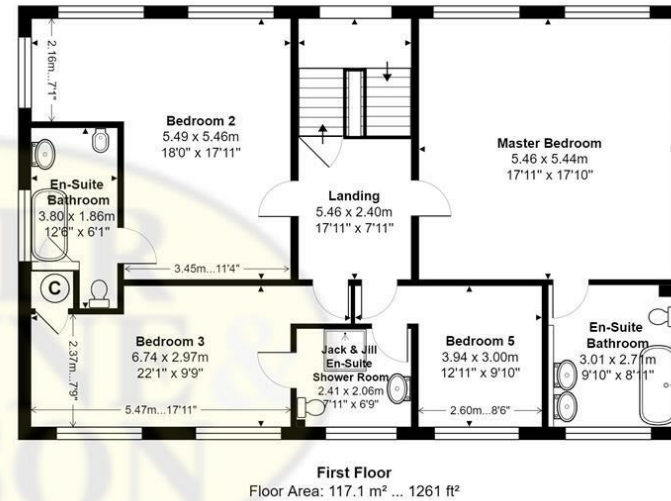
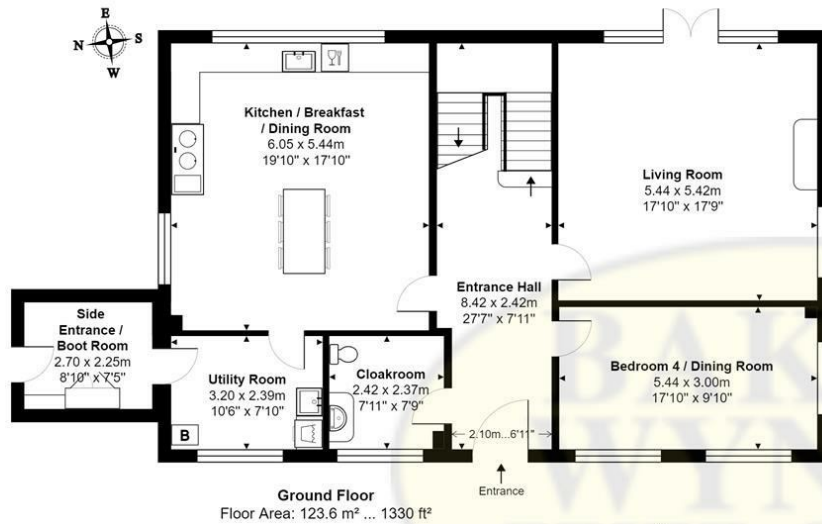


**BAKER
WYNNE &
WILSON**



**BAKER
WYNNE &
WILSON**





GARDEN HOUSE & THE ORANGERY ANNEXE, ERBISTOCK, WREXHAM, LL13 0DL

Approximate Gross Internal Area: 319.3 m² ... 3437 ft²

Whilst every attempt has been made to ensure accuracy, all measurements are approximate, not to scale. This floor plan is for illustrative purposes only and should be used as such by any prospective tenant or purchaser. Floor plan produced by Leon Sancese from Green House EPC Ltd 2023. Copyright.

Energy Efficiency Rating		Current	Potential
Very energy efficient - lower running costs			
(92 plus) A			
(81-91) B			77
(69-80) C			
(55-68) D		51	
(39-54) E			
(21-38) F			
(1-20) G			
Not energy efficient - higher running costs			
England & Wales		EU Directive 2002/91/EC	

These particulars, whilst believed to be accurate are set out as a general outline only for guidance and do not constitute any part of an offer or contract. Intending purchasers should not rely on them as statements of representation of fact, but must satisfy themselves by inspection or otherwise as to their accuracy. No person in this firm's employment has the authority to make or give any representation or warranty in respect of the property