



 2
Bedrooms

 2
Bathrooms

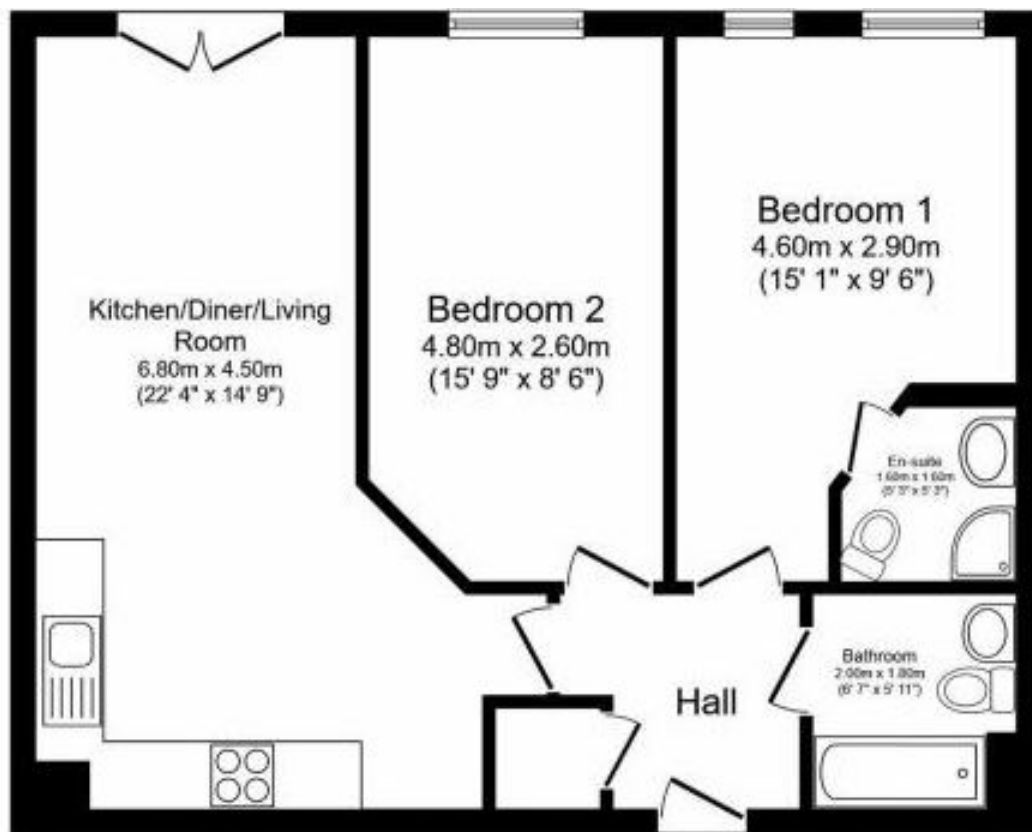
 1
Receptions



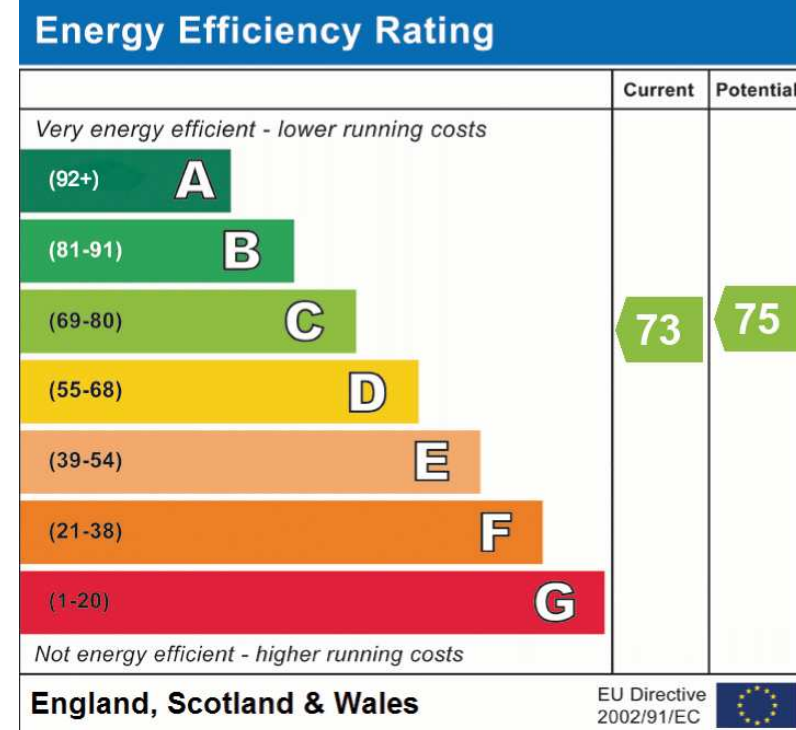
We are pleased to offer this two bedroom top floor apartment in the popular Salford Quays location. This apartment is spacious, has an open plan living/dining area and modern fitted kitchen with integrated appliances. It offers two good sized double bedrooms, one with en-suite shower room and a stylish master bathroom. The apartment comes with one underground car park space. Location is excellent as it is close to all transport links including the Metrolink - which allows easy access into Manchester City Centre. There are plenty of shops for convenience including a local Tesco and also many eateries situated around the beautiful Salford Quays.

Currently tenanted. Potential rental income £1050.00 per month.

Service charge: £2245.00 per annum Ground rent: £276.16 per annum Lease: 150 years from 2003



Total floor area 58.6 sq.m. (631 sq.ft.) approx



Address: 2 Elmira Way, Salford Quays, M5

Tel : 0161 834 8393
Email : enquiries@metro-residential.com
Address : 2 Arena Court Mirabel Street Manchester M3 1PJ



Disclaimer