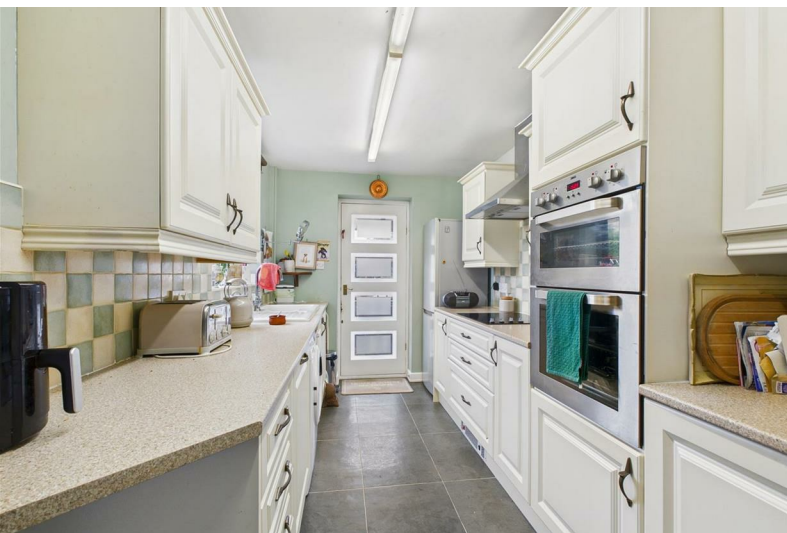




110 Macclesfield Old Road

Buxton, SK17 6TX

£365,000



110 Macclesfield Old Road

Buxton, SK17 6TX

Tenure Freehold Council Tax Band D



A delightfully situated and immaculately presented three bedroom detached home, benefitting from combi gas fired central heating and uPVC sealed unit double glazing throughout and excellent quality fittings. There are delightful gardens, both front and rear, with the rear garden backing onto open countryside. With integral garage and driveway parking, this beautifully presented home should be viewed to be fully appreciated.

DIRECTIONS

From our Buxton office, bear right and then left at the Spring Gardens roundabout. Proceed ahead taking the third left turn into St. John's Road, follow the road until reaching the traffic lights by The Duke Public House. Proceed through the lights and turn right into Macclesfield Old Road where after a short while, no. 110 will be seen on the right-hand side.

GROUND FLOOR

Entrance Porch

5'8" x 2'7" (1.73m x 0.79m)

With tiled floor, frosted uPVC sealed unit double glazed window to front and uPVC entrance door.

Hallway

13'7" x 5'9" (4.14m x 1.75m)

With wood effect laminate flooring, stairs to first floor, single radiator and doors to lounge and dining room.

Cloakroom

7'3" x 2'10" (2.21m x 0.86m)

With tiled flooring, extractor fan, low-level w.c., vanity washbasin, single radiator and part-tiled.

Kitchen

16'0" x 7'3" (4.88m x 2.21m)

Fitted with an excellent quality range of base and eye level units and working surfaces, incorporating a one and a half bowl enamel single drainer sink unit with tiled splash back. Integrated four-ring ceramic hob with stainless steel extractor over, integrated stainless steel oven, integrated dishwasher, space and plumbing for a washing machine and space for a fridge/freezer. Door to rear porch.

Rear Porch

7'4" x 3'10" (2.24m x 1.17m)

With tiled flooring and uPVC sealed unit double glazed windows and door to outside.

Dining Room

17'6" x 8'9" (5.33m x 2.67m)

With wood effect laminate flooring, double radiator, uPVC sealed unit double glazed window and uPVC sealed unit double glazed French doors leading out to the patio and garden beyond.

Lounge

15'7" x 11'3" (4.75m x 3.43m)

With wood effect laminate flooring and quartz decorative fireplace surround with mantelpiece over, incorporating an electric coal effect living flame fire. T.V. aerial point, single radiator, two wall lights and uPVC sealed unit double glazed window to front.

FIRST FLOOR

Landing

6'9" x 2'11" (2.06m x 0.89m)

With loft access and uPVC sealed unit double glazed window to side.

Bedroom One

12'3" x 11'2" (3.73m x 3.40m)

With a full range of built-in double wardrobes and chest of drawers, double radiator and uPVC sealed unit double glazed window to front.

Bedroom Two

12'0" x 8'6" (3.66m x 2.59m)

With double radiator, uPVC sealed unit double glazed window to rear with secondary double glazing and impressive views to open countryside.

Bedroom Three

8'7" x 8'7" (2.62m x 2.62m)

With double radiator, uPVC sealed unit double glazed window to the rear with secondary glazing and superb views to open countryside.

Shower Room

6'0" x 5'9" (1.83m x 1.75m)

With walk-in shower and shower curtain, pedestal washbasin and low level w.c. Double radiator and half tiled. Extractor fan and airing cupboard with shelving. Frosted uPVC sealed unit double glazed window

Integral Garage

13'11" x 8'1" (4.24m x 2.46m)

With remote up and over roller door, light and power.

OUTSIDE

To the front of the property there is a Tarmacadam driveway for the off-road parking of a vehicle, with flagged pathways and lawned garden with mature borders and pathway to the side leading to the rear garden. The rear garden is mainly laid to lawn with flagged patio areas and mature firs, trees, shrubs and borders. Garden shed.



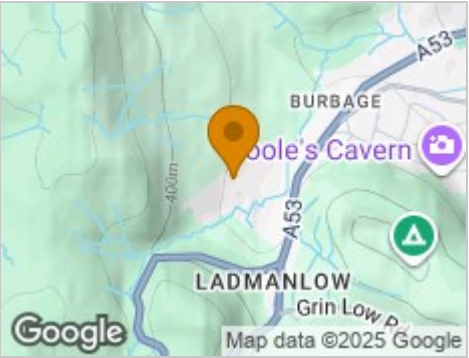
Road Map



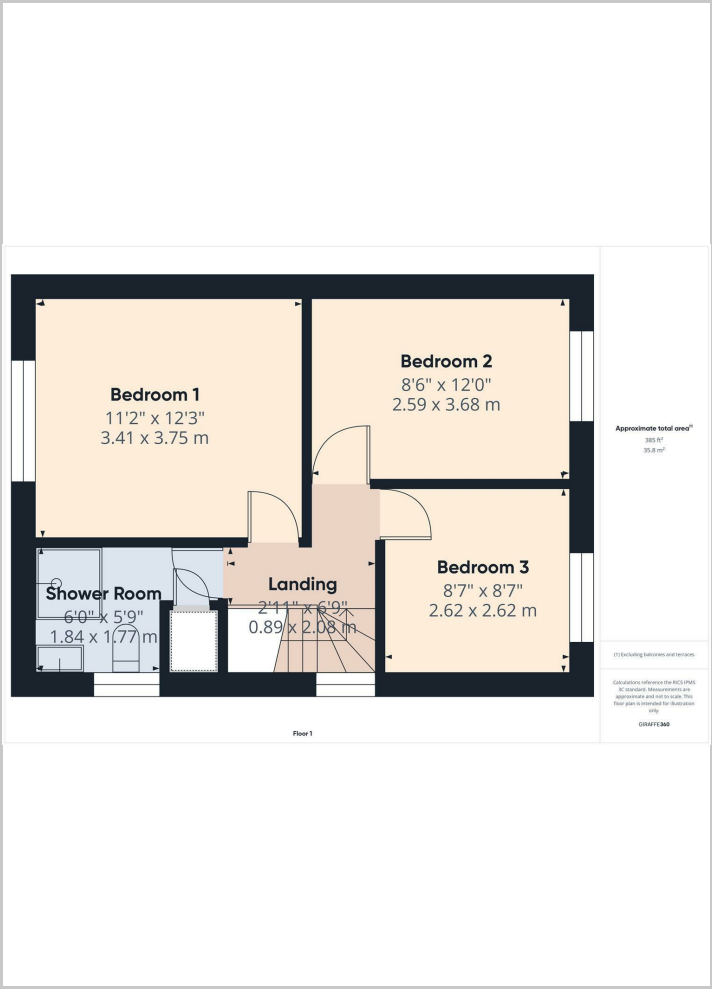
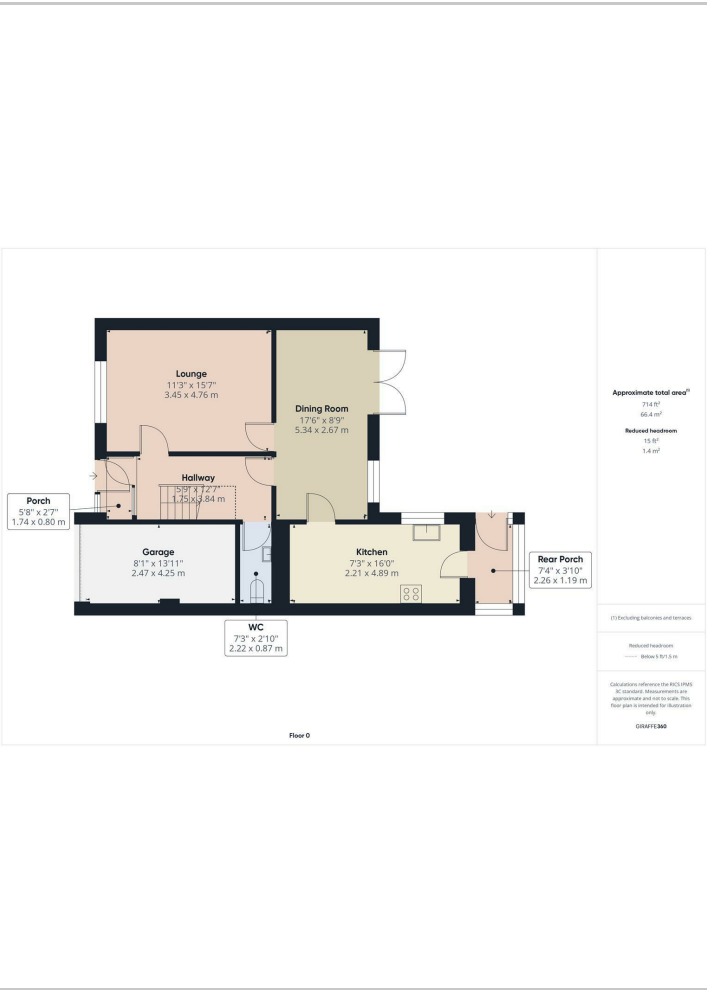
Hybrid Map



Terrain Map



Floor Plans



Viewing

Please contact our Mellors Estate Agents Office on 01298 24383 if you wish to arrange a viewing appointment for this property or require further information.

Important Notice
Mellors Estate Agents, their solicitors and joint agents give notice that:
1. They are not authorised to make or give any representations or warranties in relation to the property either here or elsewhere, either on their own behalf or on behalf of their client or otherwise. They assume no responsibility for any statement that may be made in these particulars. These particulars do not form part of any offer or contract and must not be relied upon as statements or representation of fact.
2. Any areas, measurements or distances are approximate. The text, photographs and plans are for guidance only and are not necessarily comprehensive. It should not be assumed that the property has all necessary planning building regulation or other consents and Mellors Estate Agents have not tested any services, equipment or facilities. Purchasers must satisfy themselves by inspection or otherwise.

1 Grove Parade, Buxton, Derbyshire, SK17 6AJ
Tel: 01298 24383 Email: info@mellors.org.uk www.mellors.org.uk

Energy Efficiency Graph

