



6 Mayfield Drive

Dove Holes, SK17 8FT

£262,500



6 Mayfield Drive

Dove Holes, SK17 8FT

Tenure Freehold Council Tax Band C



Benefitting from a superb corner plot and still under builders warranty, we are delighted to offer for sale this well presented and appointed three bedroom, two bathroom semi detached family home. Only constructed in recent years, the property benefits from combi gas fired central heating and uPVC sealed unit double glazing throughout, with excellent quality fittings and integrated kitchen appliances. With off road parking for two vehicles and a substantial rear garden laid with artificial grass and patio areas. An internal inspection is highly recommended.

DIRECTIONS:

From our Buxton office turn right and bear right at the roundabout. Proceed along Station Road and travel across the next roundabout and turn left at the following two roundabouts into Fairfield Road. Head out of Buxton on the A6 north towards Stockport. After several miles, on entering the village of Dove Holes along Buxton Road, proceed through the traffic lights into Hallsteads and turn right into The Meadows. Take the third left into Walker Brow taking the first left into Tunstead Avenue and at the T-junction turn right into Mayfield Drive. The property can be seen on the right hand side where our For Sale board has been erected.

GROUND FLOOR

Porch

7'5" x 3' (2.26m x 0.91m)

With a uPVC sealed unit double glazed front entrance door and two frosted uPVC sealed unit double glazed windows to front.

Entrance Hall

16'6" x 6'5" (5.03m x 1.96m)

With stairs to first floor and single radiator.

Cloakroom

4'9" x 2'9" (1.45m x 0.84m)

Fitted with a low level suite wc, wall mounted wash hand basin with splashbacks and single radiator.

Dining Kitchen

17'8" x 7'9" (5.38m x 2.36m)

Fitted with an excellent quality range of base and eye level units and quartz working surfaces incorporating a 1 1/2 bowl stainless steel single drainer sink unit. With integrated Neff oven, Neff ceramic hob and Neff stainless steel extractor. Integrated washing machine, integrated dishwasher and integrated fridge/freezer. Single radiator and uPVC sealed unit double glazed window to front.

Lounge

14'7" x 12'6" (4.45m x 3.81m)

With television aerial point, double radiator, uPVC sealed unit double glazed window to rear and sealed unit double glazed French doors leading out to the rear patio and garden.

FIRST FLOOR

Landing

10' x 6'10" (3.05m x 2.08m)

Single radiator, storage cupboard and loft access.

Bedroom One

10'11" x 10'5" (3.33m x 3.18m)

With single radiator and uPVC sealed unit double glazed window to front.

En Suite Shower Room

8'3" x 7' (2.51m x 2.13m)

With fully tiled and glazed cubicle and shower, low level suite wc and wall mounted wash hand basin. With stainless steel heated towel rail and frosted uPVC sealed unit double glazed window.

Bedroom Two

13' x 7'4" (3.96m x 2.24m)

With a single radiator and uPVC sealed unit double glazed window to rear.

Bedroom Three

9'5" x 6'10" (2.87m x 2.08m)

With single radiator and uPVC sealed unit double glazed window to rear.

Bathroom

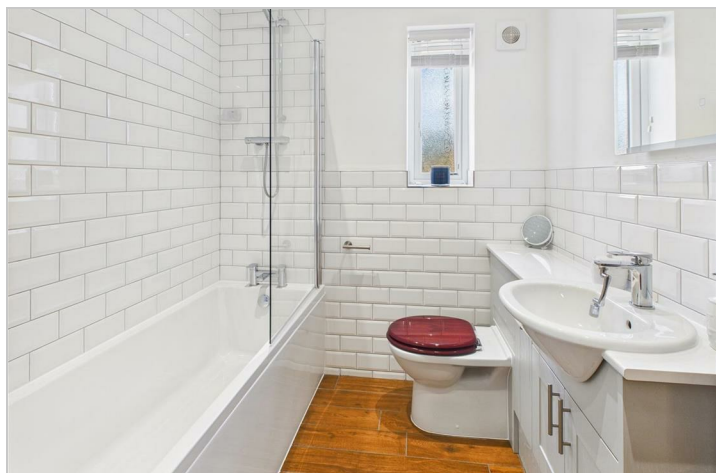
7'5" x 6'5" (2.26m x 1.96m)

With part tiled walls and fitted with an excellent quality suite comprising of panel bath with shower over and shower screen, vanity wash hand basin with storage cupboards below and low level suite wc. Frosted uPVC sealed unit double glazed window and stainless steel heated towel rail.

OUTSIDE

Garden and Driveway

To the front of the property is a tarmacadam driveway suitable for the off road parking of two vehicles. There are borders to the side with mature shrubs and flowers. The rear garden is mainly laid with artificial grass and slate chipping surround and a good size flagged patio area.



Road Map



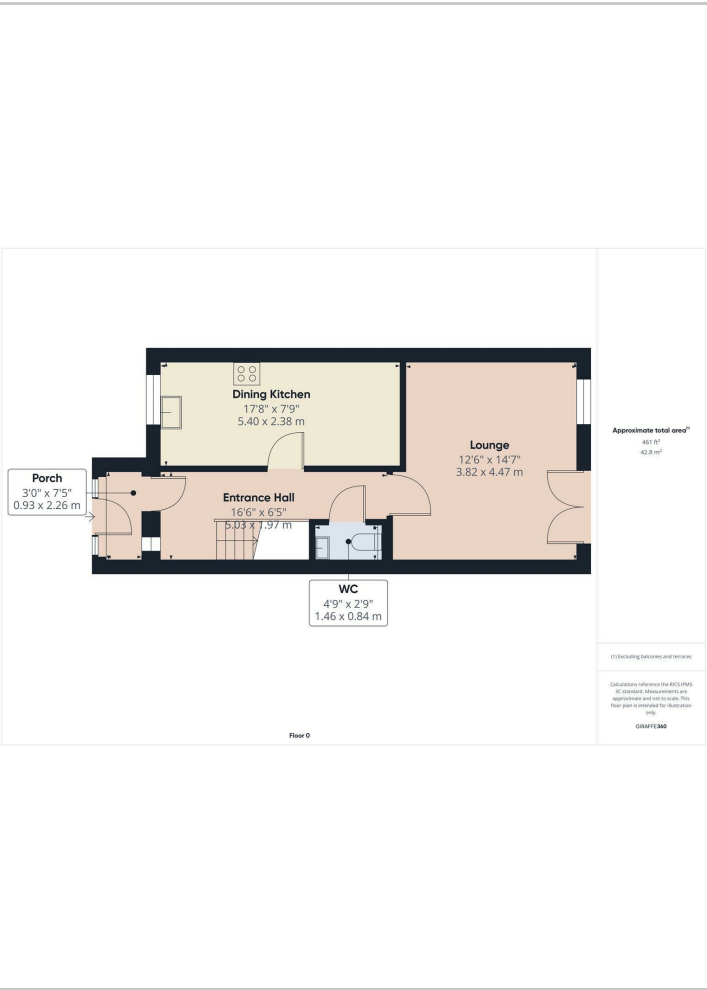
Hybrid Map



Terrain Map



Floor Plans



Viewing

Please contact our Mellors Estate Agents Office on 01298 24383 if you wish to arrange a viewing appointment for this property or require further information.

Important Notice
Mellors Estate Agents, their solicitors and joint agents give notice that:
1. They are not authorised to make or give any representations or warranties in relation to the property either here or elsewhere, either on their own behalf or on behalf of their client or otherwise. They assume no responsibility for any statement that may be made in these particulars. These particulars do not form part of any offer or contract and must not be relied upon as statements or representation of fact.
2. Any areas, measurements or distances are approximate. The text, photographs and plans are for guidance only and are not necessarily comprehensive. It should not be assumed that the property has all necessary planning building regulation or other consents and Mellors Estate Agents have not tested any services, equipment or facilities. Purchasers must satisfy themselves by inspection or otherwise.

1 Grove Parade, Buxton, Derbyshire, SK17 6AJ
Tel: 01298 24383 Email: info@mellors.org.uk www.mellors.org.uk

Energy Efficiency Graph

