



Axe Edge Green Farm Quarnford

Nr Buxton, SK17 0ST

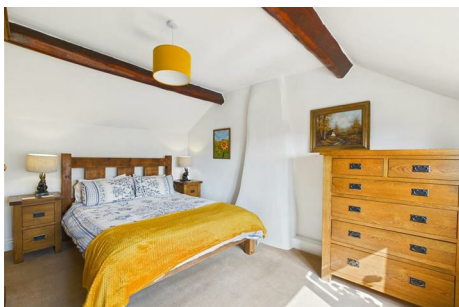
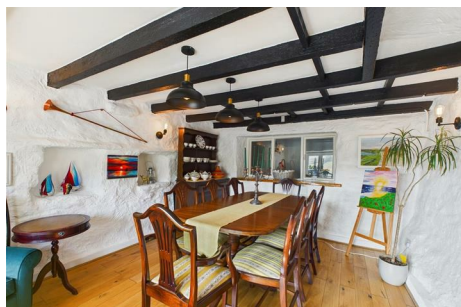
Asking Price £1,200,000



Axe Edge Green Farm Quarndon

Nr Buxton, SK17 0ST

Tenure Freehold Council Tax Band F



Situated within the parish of Quarndon within approximately ten to fifteen minutes drive of the beautiful spa town of Buxton in the heart of the Peak District National Park, we are delighted to offer for sale the property known as Axe Edge Green Farm. Set in approximately ten acres of land comprising a detached spacious farmhouse along with three established self-contained holiday lets generating a substantial income. Axe Edge Green Farm is a lifestyle choice providing an income and our clients keep a variety of animals and maintain a walled vegetable garden with a greenhouse, an orchard, polytunnel, cold frames and raised beds. They are self-sufficient in lamb, pork, eggs, milk and honey as well as vegetables and summer fruit.

The ten acres of land comprise numerous paddocks, field shelters and mediterranean garden with patio areas. There is an external wooden Shepherd's Hut that is used as a home office. In 2017 and 2018 our clients conducted a major renovation to the main farmhouse and holiday lets and the accommodation is presented to the very highest of standards throughout.

There is also a substantial double garage plus workshop. The property benefits from stunning views and offers a rare opportunity to acquire these superb properties in an idyllic location within easy reach of Buxton, Macclesfield and Leek. There are plentiful walks in the area, including The Roaches, Three Shires Head and Lud's Church and within easy access to numerous restaurants and country pubs, as well as all amenities, schools, supermarkets, and Chatsworth House.

DIRECTIONS:

From our Buxton office bear right and then left at the Spring Gardens roundabout, then second left onto St. Johns Road. Proceed along St. Johns Road and out of Buxton heading towards Leek on the A53. Follow the road for a while passing the Knights Table Public House on the left and shortly after turn right at the signpost for Flash. Proceed into Flash village and bear right at the fork in the road. Follow the road down the hill and turn right into Axe Edge Green Farm.

AXE EDGE GREEN FARM

GROUND FLOOR

Axe Edge Green Farm - Dining Kitchen

15'0" x 13'10"

Fitted with an excellent quality range of base and eye level units and wooden working surfaces incorporating a double enameled sink unit with tiled splash backs. With a solid fuel Aga range, integrated dishwasher and space for a fridge/freezer. With tiled flooring throughout, beamed ceiling and uPVC sealed unit double glazed windows and doors to front. Double doors to dining room and window to rear hallway.

Axe Edge Green Farm - Lounge

15'2" x 13'5"

With a feature stone fireplace and chimney breast with mantelpiece over and recess incorporating a cast iron log burning stove. Oak engineered flooring, beamed ceiling, three wall light points, three Victorian style radiators, window seat and uPVC sealed unit double glazed window to front. Stairs to first floor, door to side porch and door to rear hallway.

Axe Edge Green Farm - Boot Room

8'9" x 7'5"

Wooden work surfaces incorporating a stainless-steel sink unit, built-in floor to ceiling storage cupboards and Victorian style radiator, doggie shower and built-in Worcester boiler. Beamed ceiling, uPVC sealed unit double glazed window to side and sealed unit double glazed stable door to outside.

Axe Edge Green Farm - Dining Room

13'6" x 11'6"

With oak engineered flooring, Victorian style radiator, beamed ceiling, window to rear hall and uPVC sealed unit double glazed window to front.

Axe Edge Green Farm - Rear Hallway

6'9" x 5'7"

With Victorian style radiator and stairs to first floor.

Axe Edge Green Farm - Bathroom

10'6" x 5'4"

Fitted with an excellent quality suite comprising a claw foot free standing bath with Victorian style shower fitting, low-level w.c., bidet and pedestal washbasin. Extractor fan, tiled flooring and frosted uPVC sealed unit double glazed window.

Axe Edge Green Farm - Rear Hallway

9'4" x 5'10"

With window to dining kitchen, two wall light points and uPVC sealed unit double glazed window.

Axe Edge Green Farm - Storage Room

8'2" x 3'7"

Two wall light points, Victorian style radiator and uPVC sealed unit double glazed window. Window to dining room.

FIRST FLOOR

Axe Edge Green Farm - Landing

6'2" x 4'1"

With wall light point, radiator and beamed ceiling.

Axe Edge Green Farm - Bedroom One

14'2" x 10'10"

Beamed ceiling, Victorian style radiator and uPVC sealed unit double glazed window to front with views to the surrounding countryside.

Axe Edge Green Farm - Landing

8'4" x 6'5"

With Victorian style radiator, two wall light points and uPVC sealed unit double glazed window.

Axe Edge Green Farm - Storage Room

7'5" x 3'8"

With Victorian style radiator and uPVC sealed unit double glazed window.

Axe Edge Green Farm - Bedroom Two

14'2" x 7'9"

With Victorian style radiator, beamed ceiling, Velux sealed unit double glazed loft window and uPVC sealed unit double glazed window with views to the surrounding countryside.

Axe Edge Green Farm - Bedroom Three

14'4" x 6'8"

With wood effect linoleum flooring, Velux sealed unit double glazed loft window and uPVC sealed unit double glazed window with views to the front and surrounding countryside.

Axe Edge Green Farm - Bedroom Four

10'1" x 9'2"

With built-in double wardrobe, Victorian style radiator, beamed ceiling, two wall light points and uPVC sealed unit double glazed window with views to the surrounding countryside.

Axe Edge Green Farm - Shower Room

6'10" x 3'8"

Fitted with an excellent quality suite comprising a glazed and tiled double shower unit and rainfall shower, low-level w.c. and vanity washbasin. Stainless steel heated towel rail, tiled flooring, part tiled walls and Velux sealed unit double glazed loft window.

Axe Edge Green Farm - Double Garage/Workshop

25'6" x 17'8"

With light and power.

AXE EDGE COTTAGE

Axe Edge Cottage - Open Plan Kitchen/Living Area

18'11" x 14'5"

Axe Edge Cottage - Lounge Area

With laminate flooring throughout, exposed stone walls and cast iron log burning stove. Three Victorian style radiators, two uPVC sealed unit double glazed windows plus feature circular uPVC sealed unit double glazed window and cast iron spiral staircase leading to the galleried bedroom.

Axe Edge Cottage - Kitchen Area

Fitted with an excellent quality range of base units and working surfaces, incorporating a stainless steel single drainer sink unit with tiled splash back. With integrated oven, four ring ceramic hob with extractor over and space for a fridge/freezer. Wall mounted plate rack.

Tel: 01298 24383

Axe Edge Cottage - Shower Room

6'7" x 4'8"

Fully tiled and glazed shower cubicle and shower, low level w.c. and pedestal washbasin. Victorian radiator/towel rail, beamed ceiling, extractor fan and frosted uPVC sealed unit double glazed window.

Axe Edge Cottage - Galleried Bedroom

With uPVC sealed unit double glazed window to front and wall mounted electric heater.

THE HAYLOFT

GROUND FLOOR

The Hayloft - Entrance Hall

13'6" x 6'8"

With quarry tiled floor, two double radiators, stairs to first floor and wheelchair lift to first floor. Door to garage.

The Hayloft - Utility Room

13'6" x 8'5"

Fitted with a range of base and eye level units and working surfaces, incorporating a stainless steel single drainer sink unit with tiled splash back. With Worcester oil fired boiler, double radiator, space and plumbing for a washing machine and uPVC sealed unit double glazed door to rear. Access door to The View.

FIRST FLOOR

The Hayloft - Landing

16'1" x 6'0"

With double radiator, wheelchair lift access station, loft access and two walk-in storage cupboards.

The Hayloft - Open Plan Lounge/Kitchen

24'1" x 14'7"

Separate kitchen area fitted with a range of base and eye level units and working surfaces incorporating a stainless steel single drainer sink unit with tiled splash back. With integrated oven, four ring ceramic hob and extractor over, space for a fridge/freezer and uPVC sealed unit double glazed window to side.

The Hayloft - Lounge Area

With a feature cast iron log burning stove, two double radiators and two uPVC sealed unit double glazed picture windows with panoramic views of the countryside.

The Hayloft - Bedroom One

14'11" x 10'10"

With double radiator, two built-in double wardrobes and uPVC sealed unit double glazed window.

The Hayloft - En-suite Wet Room

6'4" x 10'9" (1.93m x 3.28m)

Fully tiled with wall mounted rainfall shower, vanity washbasin and low-level w.c. Extractor fan, stainless steel heated towel rail and frosted uPVC sealed unit double glazed window.

The Hayloft - Bedroom Two

10'3" x 6'6"

With double radiator and uPVC sealed unit double glazed window.

The Hayloft - Bathroom

7'8" x 5'6"

Fully tiled and fitted with an excellent quality suite comprising of panelled bath with rainfall shower and shower screen, low level w.c. and pedestal washbasin. Stainless steel heated towel rail and extractor fan.

THE VIEW

The View - Kitchen/Lounge

26'3" x 8'9"

The View - Kitchen Area

Fitted with an excellent quality range of base units and working surfaces incorporating a double enamel sink unit with tiled splash backs. With integrated Bosch four ring ceramic hob with oven below and extractor over. Double radiator, wood effect laminate flooring, exposed stone feature walls and uPVC sealed unit double glazed French doors and window with panoramic views of the countryside.

The View - Lounge Area

With cast iron log burning stove, T.V. aerial point, double radiator and two uPVC sealed unit double glazed windows with panoramic views to the countryside.

The View - Bedroom One

10'8" x 9'7"

With wood effect laminate flooring, double radiator and uPVC sealed unit double glazed window to rear. Door to utility room.

The View - En-suite Wet Room

3'10" x 6'3" (1.17m x 1.91m)

With rainfall shower, low level w.c. and pedestal washbasin. Fully tiled throughout with stainless steel heated towel rail and extractor fan.

OUTSIDE

Axe Edge Green Farm is set in ten acres of land with stunning panoramic views to the open countryside. The property benefits from off-road parking for several vehicles and has a substantial double garage/workshop. There are numerous paddocks, field shelters, a Mediterranean garden as well as a walled vegetable garden, an orchard, greenhouse, polytunnel, cold frame and raised beds. Axe Edge Green Farm offers a fabulous lifestyle, which can be self-sufficient in an idyllic location.



Road Map



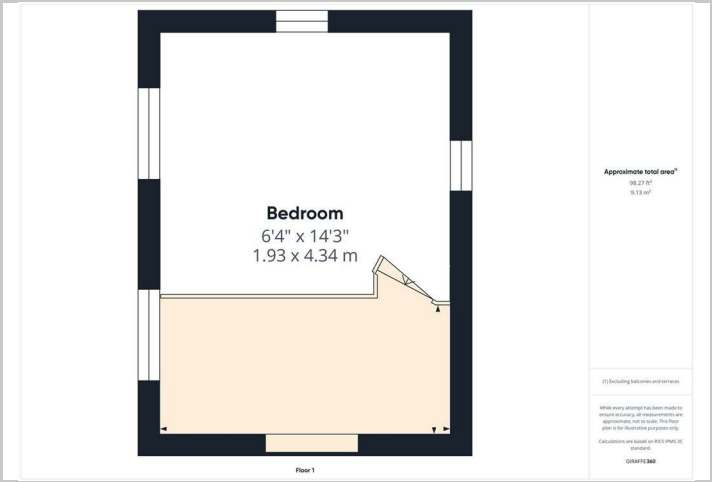
Hybrid Map



Terrain Map



Floor Plans



Viewing

Please contact our Mellors Estate Agents Office on 01298 24383 if you wish to arrange a viewing appointment for this property or require further information.

Important Notice

Mellors Estate Agents, their solicitors and joint agents give notice that:
1. They are not authorised to make or give any representations or warranties in relation to the property either here or elsewhere, either on their own behalf or on behalf of their client or otherwise. They assume no responsibility for any statement that may be made in these particulars. These particulars do not form part of any offer or contract and must not be relied upon as statements or representation of fact.
2. Any areas, measurements or distances are approximate. The text, photographs and plans are for guidance only and are not necessarily comprehensive. It should not be assumed that the property has all necessary planning building regulation or other consents and Mellors Estate Agents have not tested any services, equipment or facilities. Purchasers must satisfy themselves by inspection or otherwise.

1 Grove Parade, Buxton, Derbyshire, SK17 6AJ
Tel: 01298 24383 Email: info@mellors.org.uk www.mellors.org.uk

Energy Efficiency Graph

