



14 Thomas Fields Brown Edge Road

Buxton, SK17 7BR

75% Shared Ownership £162,500



14 Thomas Fields Brown Edge Road

Buxton, SK17 7BR

Tenure Share of Freehold **Council Tax Band** A



A rare opportunity to acquire a retirement apartment situated on the first floor in this sought after development which borders open countryside with superb views. The property is offered for sale on a 75% shared ownership basis with Housing 21. Thomas Fields offers numerous services and facilities including a lounge, restaurant, guest room, laundry room, hair salon, buggy store, lift, communal gardens and parking. The accommodation comprises an entrance hall, open plan lounge and kitchen, two bedrooms and a wet room. The property is only available for buyers aged 55 and above. Viewing is highly recommended. No onward chain.

DIRECTIONS:

From our Buxton office turn right and bear right at the roundabout. Turn left into Palace Road and left again into Lascelles Road. Follow the road around to the right as it becomes Lansdowne Road and at the junction, proceed straight across Lightwood Road into Brown Edge Road. After a short while, the entrance to Thomas Fields can be found on the left where our For Sale board has been erected.

GROUND FLOOR

Communal Entrance Hall

With lift and stairs to upper floors. Access to communal sitting room, laundry etc.

FIRST FLOOR

Communal Landing

Private Entrance Hall

Telephone point, wall mounted heater and two walk in cupboards.

Open Plan Lounge/Dining/Kitchen

Lounge/Dining

16'11" x 11'3" (5.16m x 3.43m)

Ceiling coving, wall mounted heater, uPVC sealed unit double glazed French doors overlooking the communal gardens and with views to the surrounding hills. Open plan to kitchen.

Kitchen

11'1" x 8'1" (3.38m x 2.46m)

Fitted with a range of base and wall mounted cupboards and work surfaces incorporating a 1 1/2 bowl stainless steel single drainer sink unit with mixer tap. Zanussi oven, four ring ceramic hob and extractor. Plumbing for dishwasher and space for fridge/freezer.

Wet Room

7'2" x 6'7" (2.18m x 2.01m)

With doors to access from the entrance hall and bedroom one. With part tiled walls and fitted with a wall mounted shower and curtain rail, wall mounted wash basin and low level wc. Shaver point, wall light point, wall mounted heater and Vent Axia extractor.

Bedroom One

15'4" x 9'8" (4.67m x 2.95m)

Fitted with a range of wardrobes, drawers and a vanity unit. Wall mounted heater and full length uPVC double glazed window overlooking the communal garden.

Bedroom Two

10'10" x 7'8" (3.30m x 2.34m)

uPVC double glazed window overlooking the communal gardens and wall mounted heater.

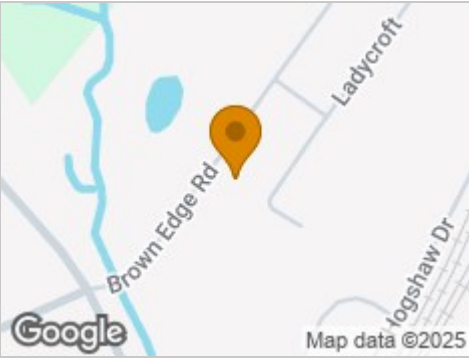
OUTSIDE

Communal Gardens and Parking

Thomas Fields stands in communal grounds with delightful gardens with pathways, lawns and mature borders with flowers and shrubs. There is a carpark at the front with bays for residents and visitor parking.



Road Map



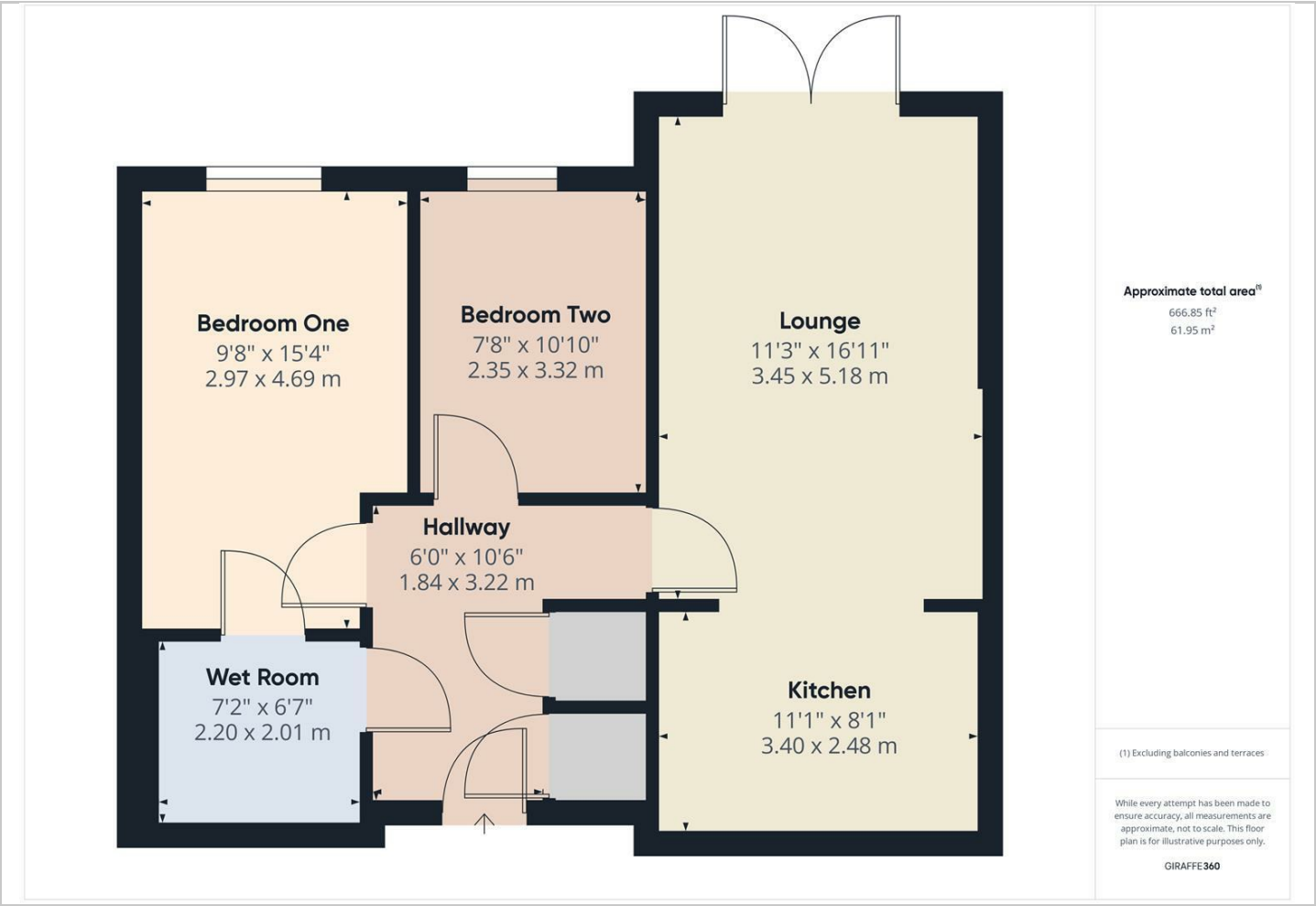
Hybrid Map



Terrain Map



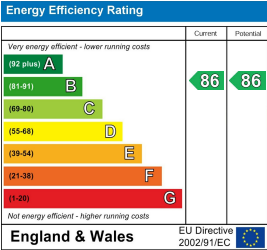
Floor Plan



Viewing

Please contact our Mellors Estate Agents Office on 01298 24383 if you wish to arrange a viewing appointment for this property or require further information.

Energy Efficiency Graph



Important Notice
Mellors Estate Agents, their solicitors and joint agents give notice that:
1. They are not authorised to make or give any representations or warranties in relation to the property either here or elsewhere, either on their own behalf or on behalf of their client or otherwise. They assume no responsibility for any statement that may be made in these particulars. These particulars do not form part of any offer or contract and must not be relied upon as statements or representation of fact.
2. Any areas, measurements or distances are approximate. The text, photographs and plans are for guidance only and are not necessarily comprehensive. It should not be assumed that the property has all necessary planning building regulation or other consents and Mellors Estate Agents have not tested any services, equipment or facilities. Purchasers must satisfy themselves by inspection or otherwise.