



93a Spring Gardens

Buxton, SK17 6BP

£115,000



93a Spring Gardens

Buxton, SK17 6BP

Tenure Leasehold Council Tax Band A



An extremely well presented two bedroom flat both with en-suite bathrooms, upgraded to a high standard within recent years and benefitting from combination gas fired central heating and sealed unit double glazing throughout. Conveniently situated in the centre of the town's main shopping area within easy reach of the town's amenities, the train station and Buxton's famous Opera House. An ideal first time buyer opportunity and would also appeal to investment purchasers. Viewing is highly recommended.

DIRECTIONS:

From our Buxton office bear right and then right again at the roundabout. Proceed to the next roundabout and turn right into New Wye Street. 93a is accessed from the rear of the building via a cast iron staircase.

GROUND FLOOR

Private security gated entrance area with a cast iron staircase leading to the first and second floors.

FIRST FLOOR

Entrance Hall
7'0" x 3'5" (2.13m x 1.04m)

Inner Hallway
29'5" x 3'1" (8.97m x 0.94m)
With double radiator.

Kitchen/Lounge/Dining Room
15'0" x 17'9" (4.57m x 5.41m)

Kitchen Area
Fitted with an excellent quality range of base and eye level units and working surfaces, incorporating a

stainless steel single drainer sink unit with splash backs. With integrated stainless steel oven with four ring ceramic hob and stainless steel extractor over. Space for a fridge and freezer under the breakfast bar.

Lounge/Dining Room Area

With decorative wooden fireplace surround and mantelpiece over with stone hearth, double radiator, ceiling cornice, sealed unit double glazed bay window and sealed unit double glazed sash window.

Bedroom One

14'0" x 13'3" (4.27m x 4.04m)
Double radiator and sealed unit double glazed window to rear.

En-suite Shower Room

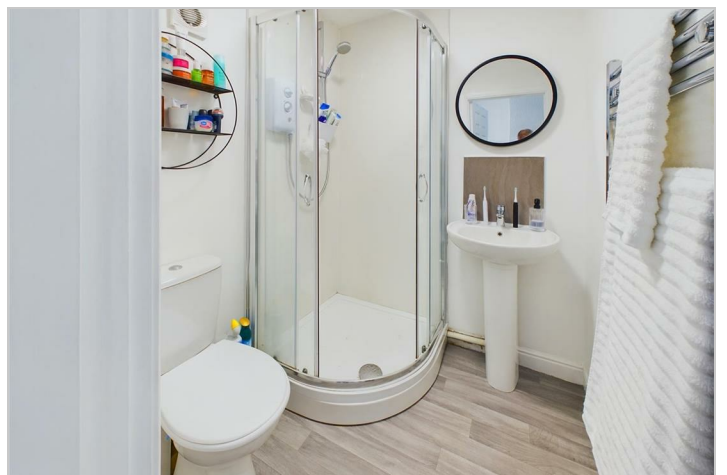
5'6" x 5'3" (1.68m x 1.60m)
With fully glazed and Mermaid board shower cubicle and shower, low level W.C. and vanity washbasin with storage below. Stainless steel heated towel rail and extractor fan.

Bedroom Two

11'5" x 7'3" (3.48m x 2.21m)
Double radiator and uPVC sealed unit double glazed window to rear.

En-suite Shower Room

7'4" x 3'3" (2.24m x 0.99m)
Fully glazed and Mermaid board shower cubicle and shower, low level W.C. and vanity washbasin. Heated towel rail and uPVC sealed unit double glazed window.



Road Map



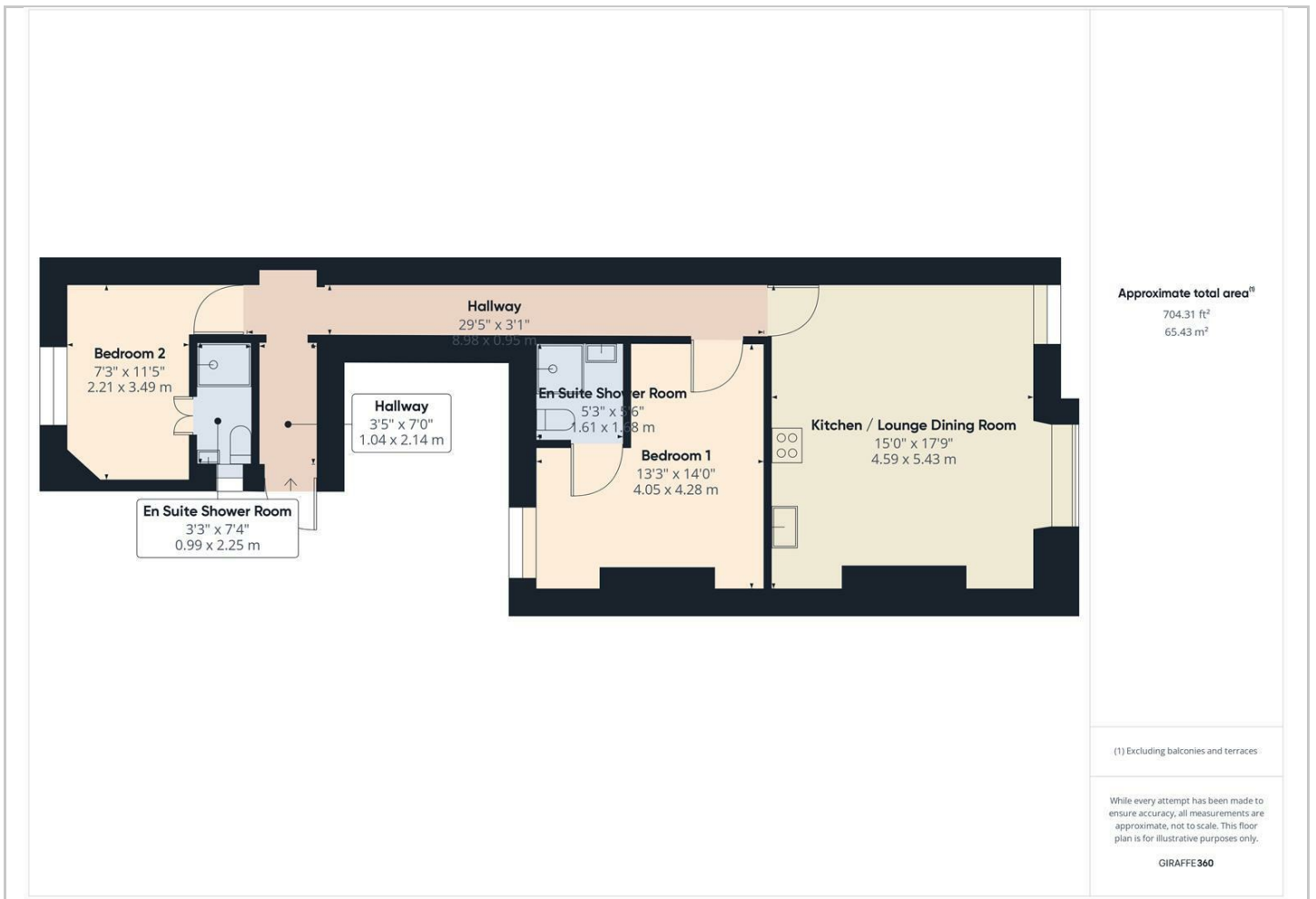
Hybrid Map



Terrain Map



Floor Plan



Viewing

Please contact our Jon Mellor & Company Office on 01298 24383 if you wish to arrange a viewing appointment for this property or require further information.

Important Notice

Jon Mellor & Company, their solicitors and joint agents give notice that:

1. They are not authorised to make or give any representations or warranties in relation to the property either here or elsewhere, either on their own behalf or on behalf of their client or otherwise. They assume no responsibility for any statement that may be made in these particulars. These particulars do not form part of any offer or contract and must not be relied upon as statements or representation of fact.
2. Any areas, measurements or distances are approximate. The text, photographs and plans are for guidance only and are not necessarily comprehensive. It should not be assumed that the property has all necessary planning building regulation or other consents and Jon Mellor & Company have not tested any services, equipment or facilities. Purchasers must satisfy themselves by inspection or otherwise.

1 Grove Parade, Buxton, Derbyshire, SK17 6AJ

Tel: 01298 24383 Email: info@mellors.org.uk www.mellors.org.uk

Energy Efficiency Graph

