



26 Heathfield Gardens Park Road

Buxton, SK17 6TN

£235,000



26 Heathfield Gardens Park Road

Buxton, SK17 6TN

£235,000



Situated on a private managed development and set within beautiful communal grounds, 26 Heathfield Gardens is a middle of only three mews/flat properties in an excellent highly desirable central location within the town. Benefitting from double glazing and combi gas fired central heating throughout, the property is immaculately presented and has the benefit of off road parking. Within easy walking distance of Buxton's Pavilion Gardens, Opera House and the town centre and its many amenities. Viewing is highly recommended.

DIRECTIONS

From our Buxton office turn right and bear left at the roundabout. Follow the road around into Manchester Road and turn left into Park Road. Proceed to the 'T' junction and turn left continuing along Park Road. After a short while the entrance to Heathfield Gardens will be seen on the right hand side. Proceed up the driveway and 26 is the middle of the row of three houses to the left of the drive.

GROUND FLOOR

Entrance Porch

5'11" x 3'9" (1.80m x 1.14m)

With single radiator and double glazed window to the front. Glazed door through into the lounge.

Cloakroom

With low level W.C., and vanity wash hand basin.

Lounge

16'0" x 10'5" (4.88m x 3.18m)

Two single radiators, T.V., aerial point, stairs to first floor and double glazed window to front.

Dining/Kitchen

13'6" x 9'8" (4.11m x 2.95m)

Fitted with an excellent quality range of base and eye level units and working surfaces incorporating a one and a half bowl single drainer sink unit with splashbacks. With integrated Neff oven, Neff ceramic four ring hob with extractor over. With integrated Neff microwave, space for a fridge/freezer and space and plumbing for a washing machine and space and plumbing for dishwasher. Cupboard housing a wall mounted Worcester combination central heating and hot water boiler. With double glazed window and double glazed French doors leading to out to the patio. Under stairs storage cupboard with space for tumble dryer.

FIRST FLOOR

Landing

5'8" x 2'11" (1.73m x 0.89m)

Bedroom One

13'3" x 10'3" (4.04m x 3.12m)

With two double glazed windows to front, single radiator, two built in double wardrobes and storage cupboard.

Bedroom Two

12'4" x 7'8" (3.76m x 2.34m)

With single radiator and double glazed window to rear. Ladder access to loft storage space which is part boarded and has lighting and shelving.

Bathroom

7'6" x 5'4" (2.29m x 1.63m)

Fitted with an excellent quality suite comprising of panelled bath with shower over and shower screen,

low level W.C., and vanity wash basin. With stainless steel heated towel rail, extractor fan and frosted double glazed window to rear.

OUTSIDE

Parking and Gardens

To the front of the property there is off road parking space for a vehicle. The maintained grounds are communal with extensive mature lawned areas, paved patios, a pond, pathways and mature trees and shrubs.



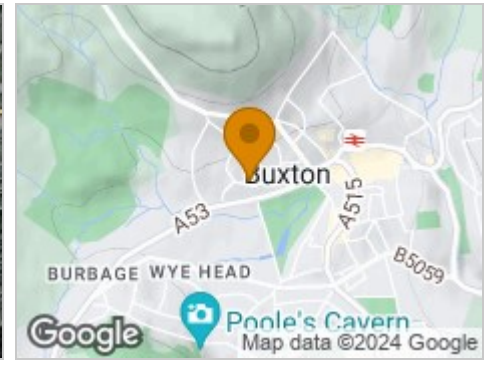
Road Map



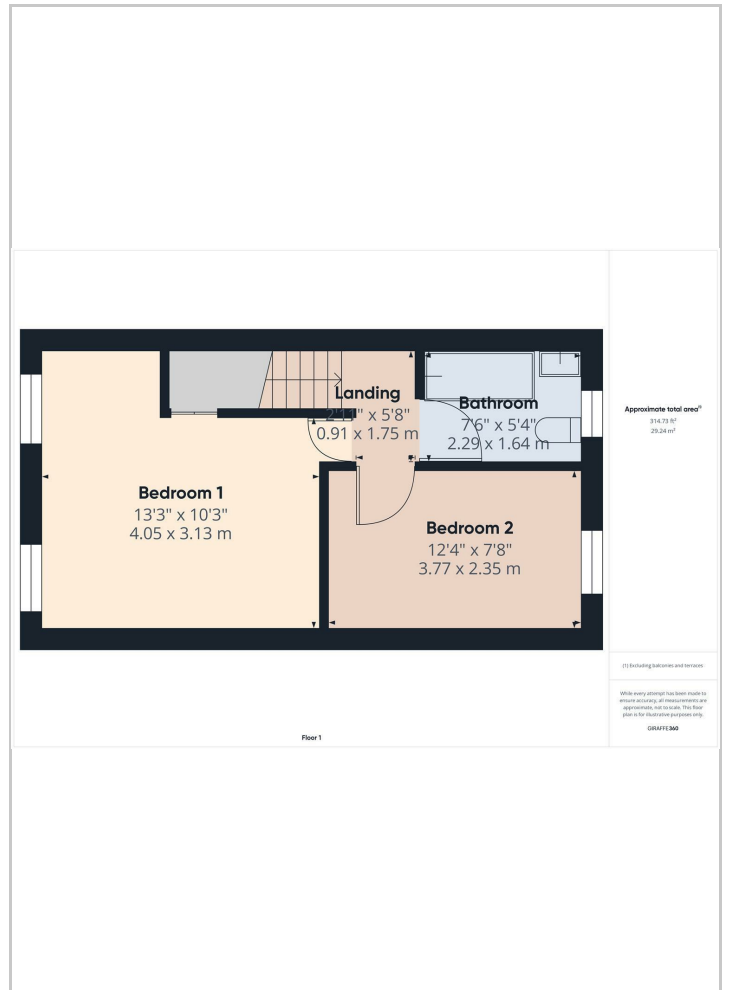
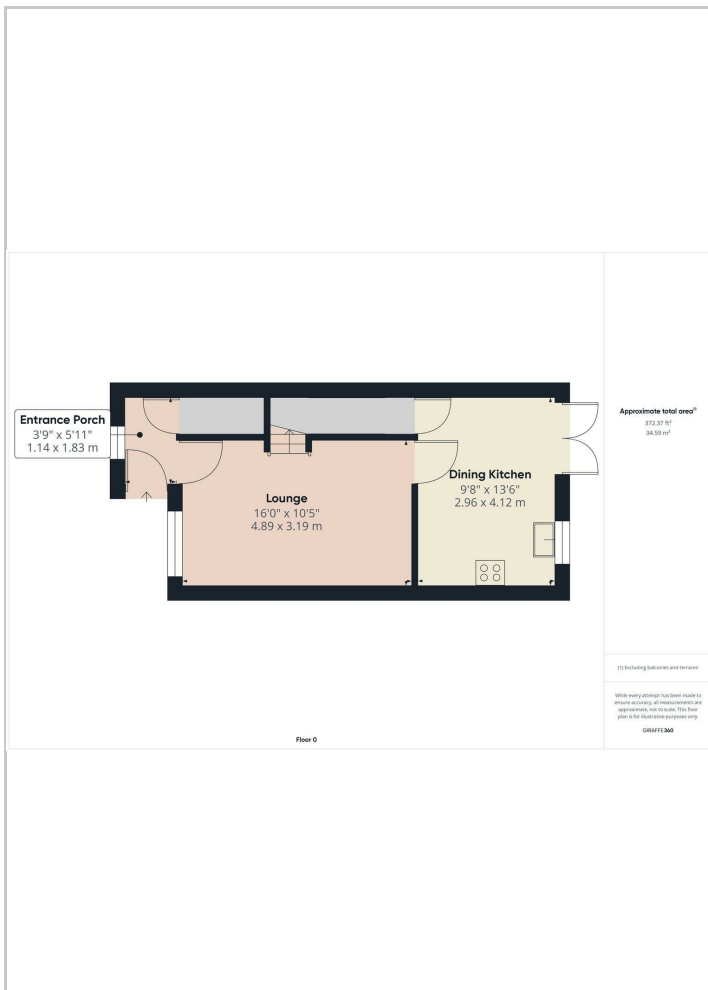
Hybrid Map



Terrain Map



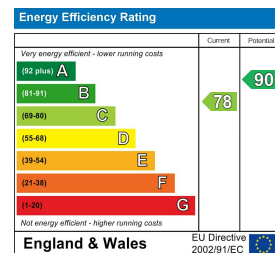
Floor Plans



Viewing

Please contact our Jon Mellor & Company Office on 01298 24383 if you wish to arrange a viewing appointment for this property or require further information.

Energy Efficiency Graph



Important Notice

Jon Mellor & Company, their solicitors and joint agents give notice that:

- They are not authorised to make or give any representations or warranties in relation to the property either here or elsewhere, either on their own behalf or on behalf of their client or otherwise. They assume no responsibility for any statement that may be made in these particulars. These particulars do not form part of any offer or contract and must not be relied upon as statements or representation of fact.
- Any areas, measurements or distances are approximate. The text, photographs and plans are for guidance only and are not necessarily comprehensive. It should not be assumed that the property has all necessary planning building regulation or other consents and Jon Mellor & Company have not tested any services, equipment or facilities. Purchasers must satisfy themselves by inspection or otherwise.

1 Grove Parade, Buxton, Derbyshire, SK17 6AJ

Tel: 01298 24383 Email: info@jonmellor.co.uk <https://www.jonmellor.co.uk>