



5 Lascelles Road

Buxton, SK17 6RA

£615,000



5 Lascelles Road

Buxton, SK17 6RA

£615,000



An impressive, EXTENDED detached property offering spacious and versatile living accommodation over two levels. Offered for sale with NO ONWARD CHAIN and situated on a sought after residential road within easy reach of the town centre. With FOUR bedrooms, two having en suite facilities, two reception rooms, a family bathroom, and a spacious living/dining kitchen. There is also a utility room and downstairs wc. The property has the benefit of gas central heating and uPVC double glazing and stands in a plot with GARDENS to the front and rear, an integral GARAGE and driveway parking. We feel that the property will appeal to a variety of purchasers and an internal viewing is highly recommended.

DIRECTIONS:

From our Buxton office turn right and bear right at the roundabout. Turn left into Palace Road and turn left again into Lascelles Road. The property can be seen on the left hand side where our For Sale board has been erected.

GROUND FLOOR

Entrance Hall

Wood effect flooring, single radiator, cupboard housing electrical consumer unit and double glazed frosted leaded entrance door.

Inner Hall

Wood effect flooring, single radiator, under stairs cupboard and staircase to first floor with low level lighting.

Lounge

22'5" x 16'3" (6.83m x 4.95m)

Plus bay. Measured into recess. Featuring a polished marble fireplace and hearth incorporating a coal and log effect electric fire. Two double radiators, uPVC double glazed bay window to side and uPVC double glazed window to side. uPVC double glazed patio doors to rear and uPVC double glazed floor to ceiling window to rear.

Dining/Living Kitchen

25'6" x 13'7" (7.77m x 4.14m)

Fitted with a range of base cupboards, drawers and larder

cupboards with low level lighting. With granite work surfaces incorporating a 1 1/2 stainless steel sink unit with mixer tap. Island with granite work surface and incorporating an AEG 4 ring electric hob and extractor above. Two integrated AEG ovens, integrated AEG fridge/freezer, integrated AEG microwave oven, integrated AEG coffee machine and integrated dishwasher. Tile effect Karndean flooring, two double radiators, wall mounted pebble effect electric fire, uPVC double glazed double doors to rear and two uPVC double glazed windows to rear.

Rear Hall

Wood effect flooring, built in cupboards, single radiator and frosted leaded double glazed door to side.

Utility Room

Fitted cupboard, shelving and work surface. Plumbing for washing machine and vent for tumble dryer. Vaillant boiler, alarm control panel, single radiator and wood effect flooring.

Wc

With part tiled walls and tile effect flooring. Fitted with a white suite comprising low level wc and corner wash basin. Single radiator and uPVC double glazed frosted window to side.

Dining Room

13'4" x 13'1" (4.06m x 3.99m)

Into both bays. With wood effect flooring, double radiator and uPVC double glazed leaded bay windows to front and side.

Bedroom Three

14'5" x 10'5" (4.39m x 3.18m)

Plus corridor entrance. Double radiator and uPVC double glazed leaded window to front.

Bedroom Four

11'10" x 11'2" (3.61m x 3.40m)

Into bay. Currently used as a study. Wood effect flooring, dado rail, double radiator and uPVC double glazed leaded bay window to front.

Bathroom

9'11" x 6'6" (3.02m x 1.98m)

With part tiled walls and fitted with a white suite comprising

panel bath with mixer tap and shower attachment, wall mounted wash basin and low level wc. Tiled and glazed cubicle with shower and body jets. Extractor and double radiator.

FIRST FLOOR

Landing

Double radiator, spindled bannister and double glazed Velux window to rear.

Bedroom One

13'1" x 13'1" (3.99m x 3.99m)

Plus window recess. Fitted with a range of wardrobes and drawers. Two double radiators and uPVC double glazed leaded window to front.

En Suite Shower Room

With part tiled walls and tile effect flooring. Fitted with a white suite comprising twin vanity wash basins with mixer taps and cupboards under and low level wc. Tiled and glazed cubicle with shower. Chrome heated towel rail and uPVC double glazed window to rear.

Bedroom Two

16'4" x 27'9" x 8'3" (4.98m x 8.46m x 2.51m)

With part sloping ceiling. Two double radiators, loft access and uPVC double glazed windows to front and rear.

En Suite Shower Room

With part tiled walls and tile effect flooring. Fitted with a white suite comprising low level wc, vanity wash basin with

cupboard under and tiled and glazed cubicle with shower. Extractor, chrome heated towel rail and double glazed Velux window to rear.

OUTSIDE

Garage

21'4" x 12'8" (6.50m x 3.86m)

With light, power and water. Single radiator and up and over door to front. Approached by a driveway providing space for off road parking.

Gardens

At the front of the property is a lawn with a selection of shrubs and bushes and steps leading from the driveway to the front door. There is also a timber shed. There are gates to either side of the house providing access to the enclosed rear garden which has a good size sitting area and a lawn which extends to one side with a stone pathway. There are flowerbeds and borders stocked with plants and shrubs.



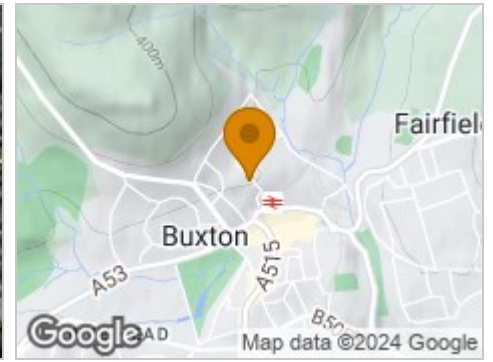
Road Map



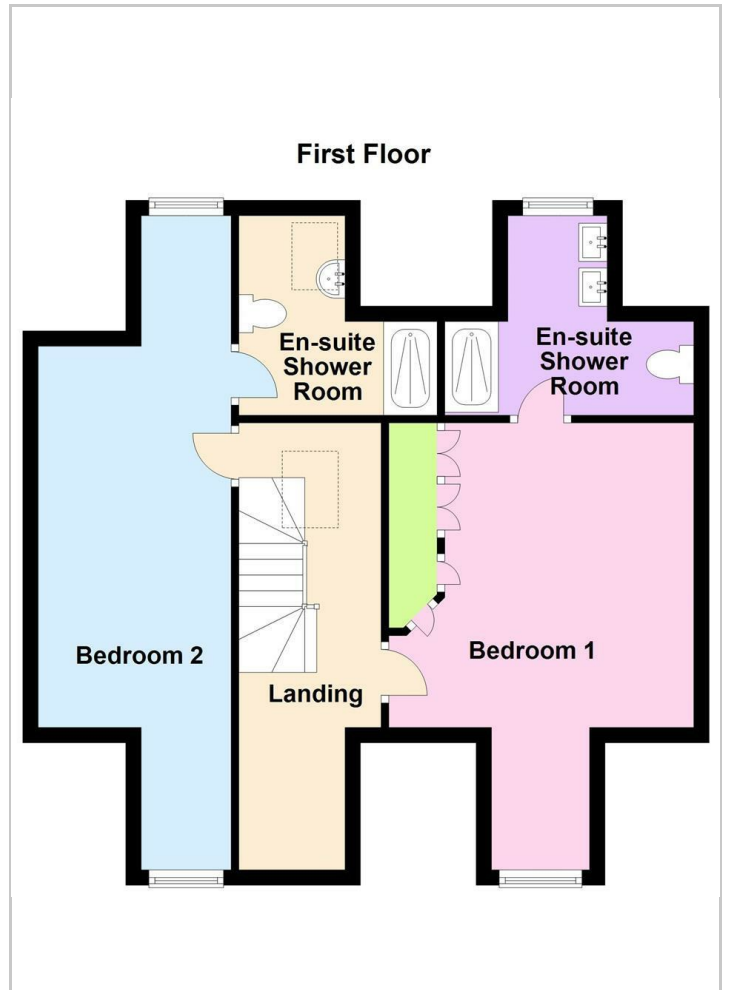
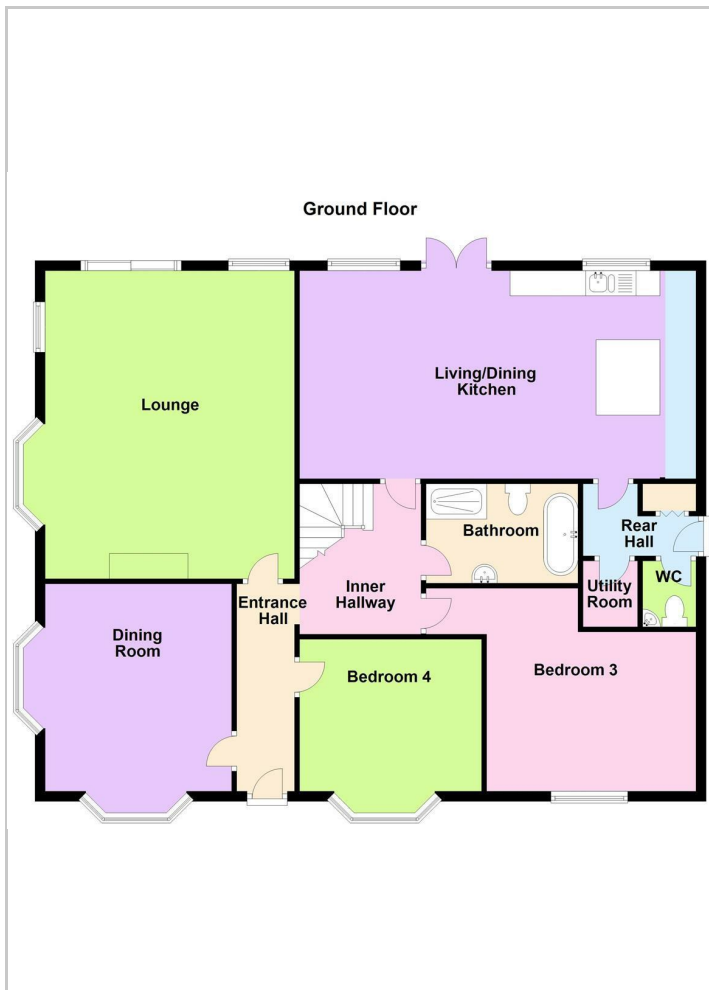
Hybrid Map



Terrain Map



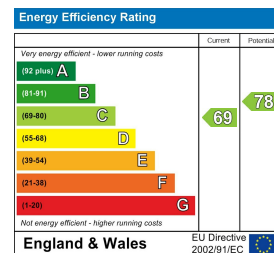
Floor Plans



Viewing

Please contact our Jon Mellor & Company Office on 01298 24383 if you wish to arrange a viewing appointment for this property or require further information.

Energy Efficiency Graph



Important Notice

Jon Mellor & Company, their solicitors and joint agents give notice that:

- They are not authorised to make or give any representations or warranties in relation to the property either here or elsewhere, either on their own behalf or on behalf of their client or otherwise. They assume no responsibility for any statement that may be made in these particulars. These particulars do not form part of any offer or contract and must not be relied upon as statements or representation of fact.
- Any areas, measurements or distances are approximate. The text, photographs and plans are for guidance only and are not necessarily comprehensive. It should not be assumed that the property has all necessary planning building regulation or other consents and Jon Mellor & Company have not tested any services, equipment or facilities. Purchasers must satisfy themselves by inspection or otherwise.

1 Grove Parade, Buxton, Derbyshire, SK17 6AJ

Tel: 01298 24383 Email: info@jonmellor.co.uk <https://www.jonmellor.co.uk>