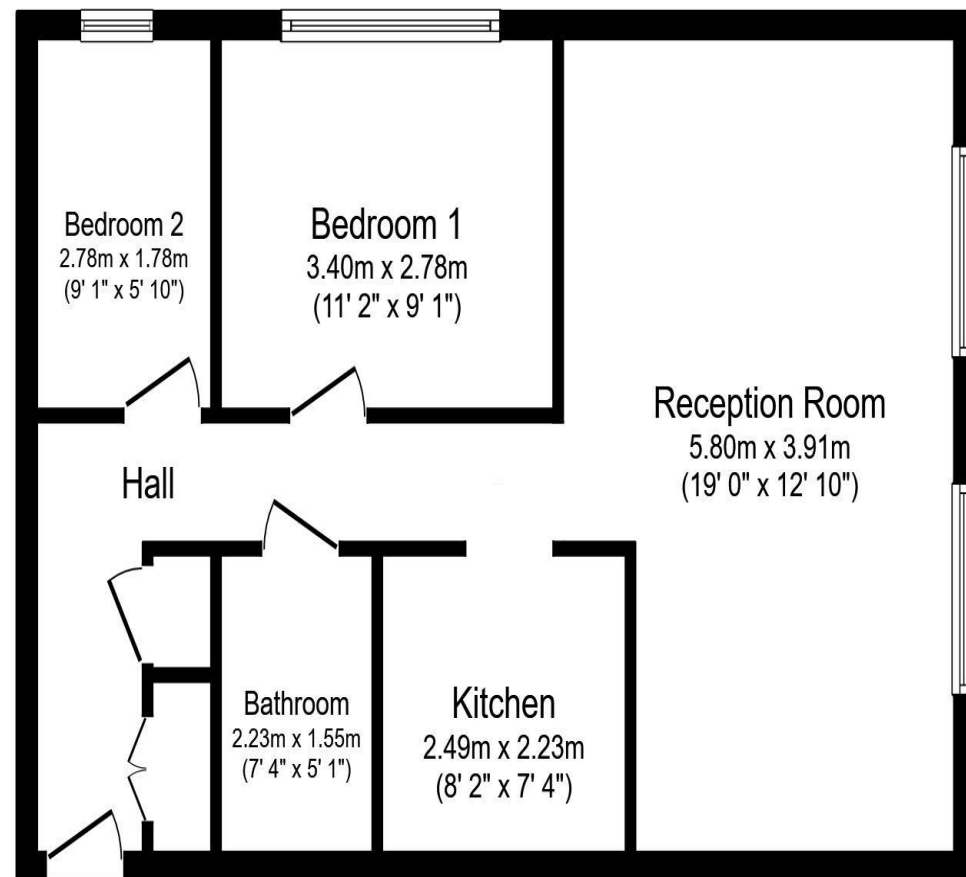


Eskdale Avenue Northolt UB5 5DW

Price Guide: Monthly Rental Of £1,275



Floor Plan

Floor area 57.3 sq.m. (617 sq.ft.)

Total floor area: 57.3 sq.m. (617 sq.ft.)

This floor plan is for illustrative purposes only. It is not drawn to scale. Any measurements, floor areas (including any total floor area), openings and orientations are approximate. No details are guaranteed, they cannot be relied upon for any purpose and do not form any part of any agreement. No liability is taken for any error, omission or misstatement. A party must rely upon its own inspection(s). Powered by www.Propertybox.io

NORTHOLT OFFICE

83 Oldfields Circus Northolt, Middlesex UB5 4RU

sales: 020 8423 2222 lettings: 020 8423 0222

northolt@bennetholmes.com

London Borough of Ealing
Council tax band C - £1814
Unfurnished
Available now for those aged 55
years plus.

IMPORTANT Bennett Holmes would inform prospective purchasers that these sales particulars have been prepared as a general guide only. A detailed survey has not been carried out, nor the services, appliances and fittings tested. Room sizes should not be relied upon for furnishing purposes and are approximate. If floor plans are included, they are for guidance only and illustration purposes only and may not be to scale. If there are any important matters likely to affect your decision to buy, please contact us before viewing the property.



Available for ages over 55 plus ONLY. Bennett Holmes are pleased to offer this two bedroom, first floor flat to let in Carisbrooke Court. This block is designed exclusively for those aged over 55 years. The property is within 0.5 miles of Northolt's shopping and transport facilities to include the Central Line Station. Also within easy reach is the A40 into and out of London. Other benefits include: two double bedrooms, a lift, electric heating, double glazed windows, communal gardens and communal residents parking. The property is offered unfurnished and is available NOW.



- AVAILABLE FOR THOSE AGED 55 YEARS PLUS
- TWO DOUBLE BEDROOMS
- FIRST FLOOR FLAT
- LIFT ACCESS
- 0.5 MILES TO NORTHOLT TUBE
- COMMUNAL GARDENS AND PARKING
- UNFURNISHED
- AVAILABLE NOW

Eskdale Avenue Northolt UB5 5DW

Price Guide: Monthly Rental Of £1,275



Accommodation

There is a secure entry phone operated communal entrance leading into the hallway. There are stairs and lift access to the first floor. The flats entrance hallway has doors to the airing cupboard, two double bedrooms and has arches to the lounge and the kitchen. Outside the property are landscaped communal gardens and communal residents parking. There is also a warden who lives on site.

London Borough of Ealing
Council tax band C - £1814
Unfurnished
Available now
Only available for those aged 55 years plus.

