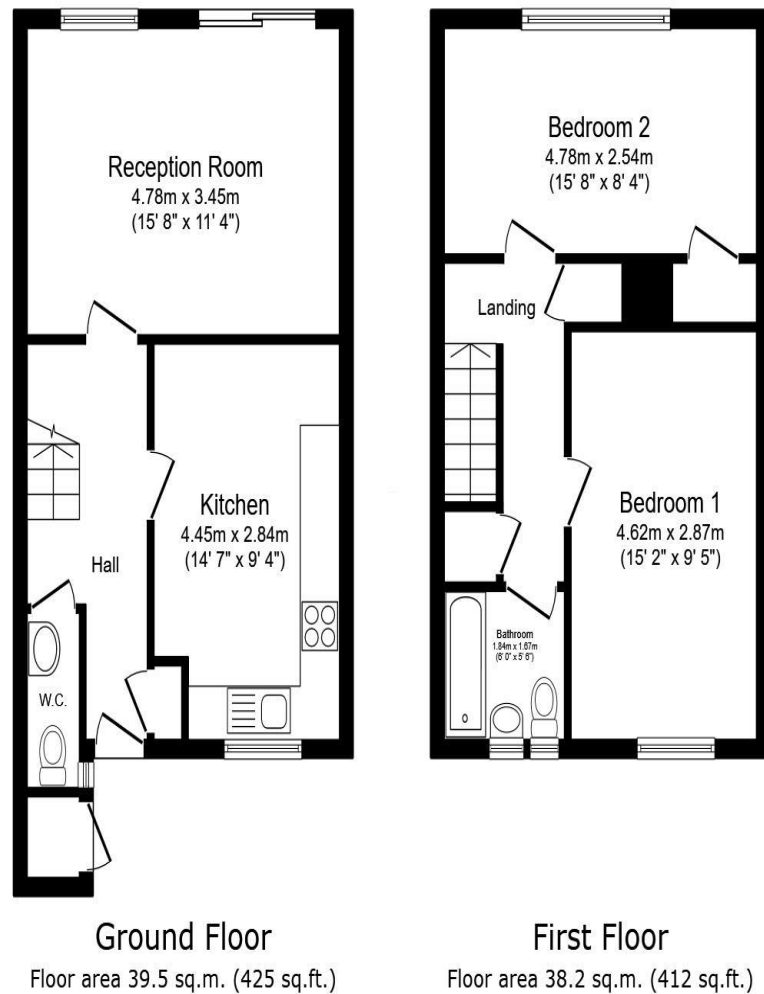


## Bedser Drive Greenford UB6 0SE

Price Guide: £450,000



Total floor area: 77.7 sq.m. (837 sq.ft.)

This floor plan is for illustrative purposes only. It is not drawn to scale. Any measurements, floor areas (including any total floor area), openings and orientations are approximate. No details are guaranteed, they cannot be relied upon for any purpose and do not form any part of any agreement. No liability is taken for any error, omission or misstatement. A party must rely upon its own inspection(s). Powered by www.Propertybox.io

### NORTHOLT OFFICE

83 Oldfields Circus Northolt, Middlesex UB5 4RU

sales: 020 8423 2222 lettings: 020 8423 0222

[northolt@bennetholmes.com](mailto:northolt@bennetholmes.com)

Freehold  
London Borough of Ealing  
Council tax band D- £2,041  
EPC =C

**IMPORTANT** Bennett Holmes would inform prospective purchasers that these sales particulars have been prepared as a general guide only. A detailed survey has not been carried out, nor the services, appliances and fittings tested. Room sizes should not be relied upon for furnishing purposes and are approximate. If floor plans are included, they are for guidance only and illustration purposes only and may not be to scale. If there are any important matters likely to affect your decision to buy, please contact us before viewing the property.



Bennett Holmes are delighted to offer this two double bedroom mid terrace house situated on a residential close in North Greenford. The property is within 0.6 miles of Sudbury Hill's main shopping and transport facilities to include the Piccadilly Line and Chiltern Railway Line stations. Local schools are also nearby with the popular Greenwood Primary being within walking distance. Other benefits include a downstairs WC, double glazing, gas central heating, an enclosed rear garden and off street parking.





- TWO DOUBLE BEDROOMS
- MID TERRACE HOUSE
- FREEHOLD
- DOWNSTAIRS WC
- OFF STREET PARKING
- DOUBLE GLAZED WINDOWS
- GAS CENTRAL HEATING
- 0.6 MILES TO SUDBURY HILL TUBE

## Bedser Drive Greenford UB6 0SE

**Price Guide:** £450,000



### Accommodation

The accommodation briefly comprises own front door opening to the entrance hall with doors to the kitchen, downstairs WC and reception room. The kitchen is fitted with wall and base level units, a sink and drainer, a gas cooker point, plumbing for a washing machine and space for a fridge/ freezer. The reception room has double glazed sliding patio doors to the rear garden. Stairs lead to the first floor landing with doors to two double bedrooms, the family bathroom and has access to the loft. The bathroom comprises a panel enclosed bath with a shower unit, wash hand basin and low level w.c. Outside the property is a private rear garden which is mainly patio with a decked area.

