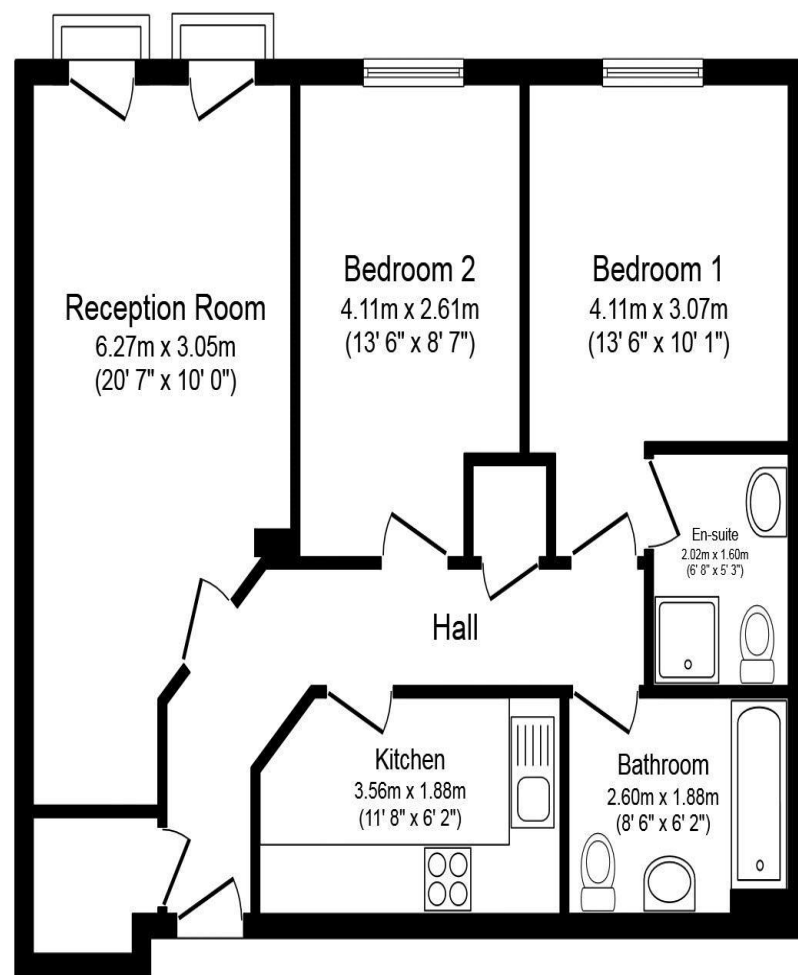


Pembroke Road Ruislip HA4 8NH

Price Guide: Monthly Rental Of £1,850



Second Floor

Total floor area 64.8 sq.m. (697 sq.ft.) approx
This plan is for illustration purposes only and may not be representative of the property. Plan not to scale.

NORTHOLT OFFICE

83 Oldfields Circus Northolt, Middlesex UB5 4RU

sales: 020 8423 2222 lettings: 020 8423 0222

northolt@bennetholmes.com

Available 16th May
Unfurnished
Borough of Hillingdon
Council Tax Band E
Council Tax £2,152 per annum
EPC =C

IMPORTANT Bennett Holmes would inform prospective purchasers that these sales particulars have been prepared as a general guide only. A detailed survey has not been carried out, nor the services, appliances and fittings tested. Room sizes should not be relied upon for furnishing purposes and are approximate. If floor plans are included, they are for guidance only and illustration purposes only and may not be to scale. If there are any important matters likely to affect your decision to buy, please contact us before viewing the property.



Bennett Holmes are delighted to offer this two bedroom, two bathroom purpose built apartment in the ever popular Kings Lodge located just moments from Ruislip High Street with its array of shopping facilities and within walking distance of Ruislip's Metropolitan and Piccadilly Line tube. The apartment is offered in excellent decorative order throughout with a modern kitchen, modern bathrooms and the added advantage of an allocated parking space. Offered unfurnished and available 16th May.



- MODERN APARTMENT
- TWO DOUBLE BEDROOMS
- TWO MODERN BATHROOMS
- MODERN FITTED KITCHEN
- ALLOCATED PARKING
- HIGH STREET LOCATION
- UNFURNISHED
- AVAILABLE 16TH MAY

**Pembroke Road
Ruislip
HA4 8NH**

Price Guide: Monthly Rental Of £1,850



Accommodation

Kings Lodge offers a spacious communal entrance with a concierge, gymnasium and communal roof terrace. With lift access to all floors the apartment is located on the second floor. The front door leads to the entrance hall with doors to all rooms. The lounge has two double glazed doors to a Juliette balcony, the modern fitted kitchen includes a range of base and eye level units and a built-in electric oven with fitted electric hob and extractor hood. The master bedroom has a modern en-suite shower room and there is a second double bedroom. There is also a modern family bathroom.

