



28 Truggers Lane, Chiddingstone Hoath, Kent TN8 7BP
Guide: £750,000 - £780,000 Freehold

JAMES MILLARD
INDEPENDENT ESTATE AGENTS



- *Character Semi-Detached Country Cottage
- *Idyllic Location Situated in a Rural Hamlet
- *Three Double Bedrooms *Three Reception Rooms
- *Conservatory/Garden Room *Main Bedroom with Decked Balcony
- *Family Bathroom with Roll Top Bath
- *Gravelled Parking Area *Pretty Cottage Front & Side Gardens
- *Extensive Additional Gardens with Glorious Views

Description

This charming tile hung semi-detached three bedroom cottage occupies an idyllic situation within this delightful rural hamlet. This delightful country cottage enjoys nicely proportioned rooms, character features, kitchen with AGA for a cosy country feel and has the benefit of additional elevated gardens affording glorious views over the surrounding countryside.

Accommodation

- Entering the property via wooden stable door leading into the kitchen fitted with a range of wooden wall mounted display cabinets and base units of cupboards and drawers with laminate workshops. Oil fired AGA providing heating and hot water, ceramic sink, space for freestanding fridge/freezer, quarry tiled flooring and door to:-
- Dining room with oak flooring, brick chimney breast with woodburning stove set on a brock hearth, ceiling beams and corner staircase rising to the first floor.
- Off the dining room a small office space with quarry tiled flooring links through to the conservatory with wooden steps leading down into the sitting room.
- Triple aspect sitting room full of character, central feature open fireplace with canopy, beam, stone hearth and fitted oak shelving to recess. Wall light points and oak flooring.
- Conservatory/garden room overlooking the gardens of aluminium construction with fitted blinds, sliding patio doors leading out onto the terrace and ceramic tiled flooring.
- First floor split level landing, attractive wooden balustrade, vaulted ceiling with beams.
- Dual aspect main bedroom suite enjoying French doors opening to a sunny decked balcony overlooking the gardens. Fitted wardrobe and door to en-suite shower room comprising close coupled toilet, vanity basin and tiled corner shower enclosure.
- Second bedroom with aspect of front, feature cast iron fireplace, access to loft space via hatch. Third bedroom with fitted wardrobes, feature cast iron fireplace and lovely outlook over the garden.
- Character family bathroom comprising roll top bath, toilet with high level cistern, pedestal basin and stripped wooden flooring. Shower over bath with high rail and curtain.

- Pretty cottage gardens surround the property having tiered mature shrubs/flower beds and terrace with steps leading up to an area of lawn with mature shrub borders including Rhododendrons.
- The gardens continue upwards to two further private areas of garden siding woodland with glorious panoramic views over the surrounding countryside as far as the reservoir and backing farmland. Outbuildings include several garden sheds and a summer house. Vegetable patch with pond, greenhouse and screened oil tank.
- The property is approached over a shared driveway with gravel parking area for two cars. Part walled gardens with pretty original well and climber to the front elevation and cottage borders and planting.
- Services and Points of Note: Mains electric and water. Oil fired central heating via AGA. Additional gardens held on a separate title.
- Council Tax Band: D -Sevenoaks District Council
- EPC: E

Chiddingstone Hoath

Chiddingstone Hoath is a small rural hamlet with The Rock public house at the end of Truggers Lane and is about two miles from Chiddingstone village with its popular primary school, church, local shop and tea room. Nearby, Hever and Penshurst also have primary schools and there are main line stations in Hever and Hildenborough offering services to London Bridge/ Waterloo/Charing Cross and nearby Cowden station which offers free parking. Edenbridge has two main line stations and shopping facilities including Waitrose as well as recreational facilities. Tunbridge Wells and Sevenoaks both have main line stations, excellent schools and offer comprehensive shopping.

Viewing Strictly By Appointment

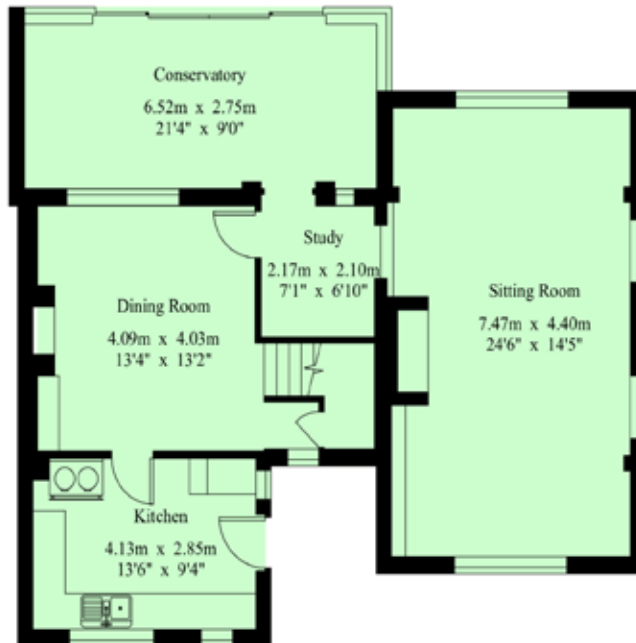
01732 834835

www.jamesmillard.co.uk
hildenborough@jamesmillard.co.uk

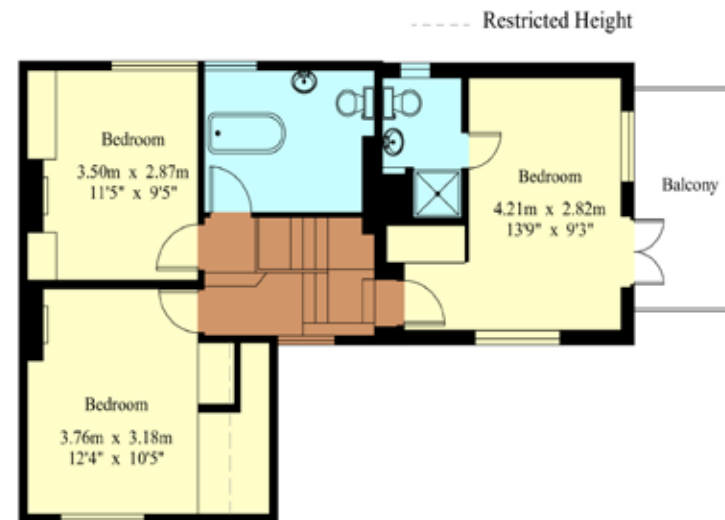


28 Truggers Lane

Gross Internal Area : 153.4 sq.m (1651 sq.ft.)



Ground Floor



First Floor



For Identification Purposes Only.

© 2025 Trueplan (UK) Limited (01892) 614 881

James Millard Independent Estate Agents, their clients and any joint agents give notice that: 1.They have no authority to make or give any representations or warranties in relation to the property. These particulars are given in good faith and are to be treated as a general guide only and do not constitute any part of an offer or a contract and must not be relied upon as statements or representations of fact. All statements contained in these particulars are made without any responsibility on the part of James Millard Independent Estate Agents or the vendor or lessor of this property. Any intending purchasers must satisfy themselves by inspection or otherwise as to the correctness of each of the statements contained in these particulars. If any points are particularly relevant to your interest in the property please ask for further information. 2. Any areas, measurements or distances are approximate. The text, photographs and plans are for guidance only and are not necessarily comprehensive. It should not be assumed that the property has all necessary planning, building regulation or other consents. 3. It should not be assumed that any contents, furnishings, furniture etc photographed are included in the sale, nor that the property remains as displayed in the photographs. No assumptions should be made with regard to parts of the property that have not been photographed. 4. Prospective purchasers are advised to satisfy themselves as to the working order of any apparatus, equipment, fixtures and fittings or services where applicable. Whilst they may be mentioned in the particulars, they have not been tested by the Agents. J205

