



Harden Cottage, Grove Road, Penshurst, Kent TN11 8DX
Guide: £950,000 Freehold

JAMES MILLARD
INDEPENDENT ESTATE AGENTS



- *Delightful Detached Period Cottage
- *Idyllic Rural Setting *Surrounded by Open Countryside
- *Sitting Room *Kitchen/Dining Room *Cloakroom *Three Double Bedrooms
- *Main Bedroom with En-Suite Bathroom
- *Second Floor Bedroom with En-Suite Shower
- *Further Bedroom/Reception Room *Mature Gardens Surrounding the Property
- *Gated Gravel Driveway providing Off Road Parking

Description

Harden Cottage is a charming period country cottage, believed to date back to the late 17th century having formed part of the Astor family estate. It is situated in an idyllic rural setting, enveloped by uninterrupted breathtaking countryside on the outskirts of Penshurst village, within the High Weald Area of Outstanding Natural Beauty. This enchanting cottage has served as a cherished family home, only changing hands twice within the last 100yrs, situated at the end of a tranquil, no through lane. Here, one can enjoy delightful walks directly from the doorstep into the village, offering a perfect blend of seclusion and accessibility.

Accommodation:-

- Step into the charming kitchen/dining room through a delightful wooden painted stable door. This bright, dual aspect space enjoys exposed wall and ceiling beams, complemented by the timeless finish of stone tiled flooring throughout. The kitchen is fitted with cream shaker style wall cabinets and base units, accented by a contrasting square edge worktop and a classic tiled splashback. A sink, perfectly positioned to offer a lovely view of the gardens. The kitchen is equipped with a single oven, ceramic hob with extractor fan, integrated dishwasher, space for a washing machine, and space for an American style freestanding fridge/freezer.
- A charming latch door leads to the contemporary cloakroom, featuring a white suite with a close coupled toilet, a wall mounted basin, half height tiling, a chrome heated towel rail, inset lighting, and a continuation of the stone tiled flooring.
- The sitting room is a quintessential country retreat, a lovely triple aspect haven with floor and ceiling beams, and oak flooring. The centrepiece is a cosy fireplace with a wood burning stove and a beam above, adding to the room's rustic charm. A staircase ascends and turns to the first floor landing, which is illuminated by inset lighting and leads to the second floor.
- The main bedroom suite on the second floor is a lovely sanctuary, featuring fitted wardrobes, feature wallpaper, and a small fireplace with a log burner. The ensuite bathroom is a luxurious escape, fitted with a white suite that includes a roll top bath with a freestanding tap, vanity unit with basin, toilet, ceiling lighting, a chrome heated towel rail, and ceramic flooring.
- The second bedroom/reception room, currently utilised as a study, is a dual aspect room that offers a lovely outlook over the surrounding countryside, providing a peaceful and inspiring space.
- Ascending to the second floor attic room, you'll find another dual aspect space with dormer windows, feature wallpaper to one wall, and a door leading to an ensuite shower room. This shower room is equipped with a white suite, including a vanity unit, basin, toilet, and a separate tiled shower enclosure.



- A delightful feature of this property is its picturesque gardens and grounds, which embrace the cottage on three sides and blend into the open countryside, offering stunning, uninterrupted views. The landscape features lush lawns dotted with mature trees, bordered by charming hedgerows, and adorned with cottage style flowers and shrubs. Brick paved terrace, ideal for alfresco dining and pathways, a raised timber deck, and Wendy house add to the charm. Access is through five bar gates and a gravel driveway, providing convenient off road parking.
- Services & Points of Note:- Mains electric. Oil central heating, Worcester external boiler and oil tank. Private drainage, septic tank, emptied twice yearly costing approx. \$400p/a. Rights of access over unadopted lane owned by Salmans Manor approx. \$500p/a into a sinking fund for the upkeep. BT broadband connection.
- Council Tax Band: F – Sevenoaks District Council.
- EPC: E

Penshurst

The property is situated on the outskirts of this picturesque and historic village, close to the renowned Penshurst Place and Gardens. The village is embraced by stunning open countryside, providing numerous opportunities for recreational activities. Local shops and amenities include Penshurst Primary School, the village hall, St. John the Baptist Church, the Leicester Arms public house, Forge Stores post office with a fuel pump, Fir Tree House Tea Rooms, a doctor's surgery, and the popular Kingdom Café just outside the village. Nearby, Royal Tunbridge Wells and Tonbridge towns offer excellent shopping, recreational, and educational facilities, including mainline stations to London, with bus routes from the village. Additionally, there is a mainline station to London available at Hildenborough, serving the Charing Cross/Cannon Street line.

Directions

What Three Words: Orders.Breed.Grab.

Please note this property is not accessible off Salmons Lane, it is situated off Grove Road via an unmade track.



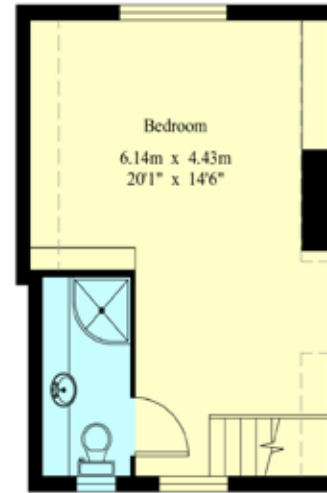
Viewing Strictly By Appointment

01732 834835

www.jamesmillard.co.uk
hildenborough@jamesmillard.co.uk

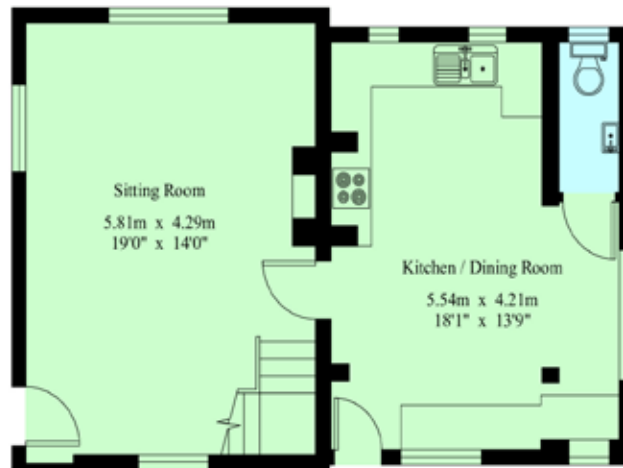
Harden Cottage

Gross Internal Area : 118.7 sq.m (1277 sq.ft.)

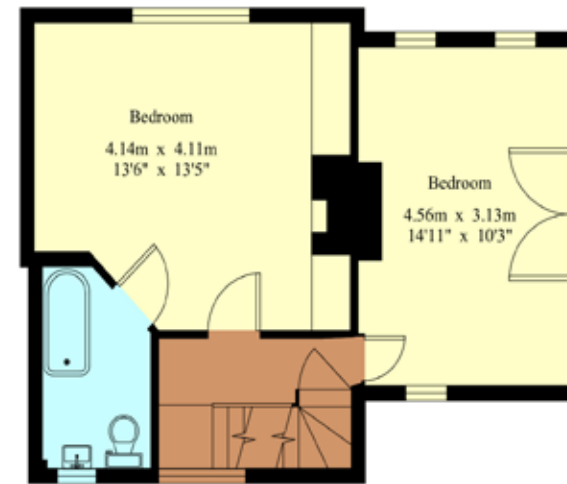


Second Floor

----- Restricted Height



Ground Floor



First Floor



For Identification Purposes Only.

© 2024 Tracplan (UK) Limited (01892) 614 881

James Millard Independent Estate Agents, their clients and any joint agents give notice that: 1.They have no authority to make or give any representations or warranties in relation to the property. These particulars are given in good faith and are to be treated as a general guide only and do not constitute any part of an offer or a contract and must not be relied upon as statements or representations of fact. All statements contained in these particulars are made without any responsibility on the part of James Millard Independent Estate Agents or the vendor or lessor of this property. Any intending purchasers must satisfy themselves by inspection or otherwise as to the correctness of each of the statements contained in these particulars. If any points are particularly relevant to your interest in the property please ask for further information. 2. Any areas, measurements or distances are approximate. The text, photographs and plans are for guidance only and are not necessarily comprehensive. It should not be assumed that the property has all necessary planning, building regulation or other consents. 3. It should not be assumed that any contents, furnishings, furniture etc photographed are included in the sale, nor that the property remains as displayed in the photographs. No assumptions should be made with regard to parts of the property that have not been photographed. 4. Prospective purchasers are advised to satisfy themselves as to the working order of any apparatus, equipment, fixtures and fittings or services where applicable. Whilst they may be mentioned in the particulars, they have not been tested by the Agents. J205

