

**Joyce Heeps Homes Ltd**  
E.K. Business Park  
14 Stroud Road  
East Kilbride  
G75 0YA



## **Somerville Terrace, The Murray, East Kilbride G75 0LJ**

Joyce Heeps Homes are delighted to market this two-bedroom ground floor flat with gas central heating, UPVC double glazing and sun balcony, situated very close to East Kilbride Town Centre, Train Station and Village.



### **Features**

Security Entry

Modern kitchen

Fully tiled walk-in shower room

Gas central heating

UPVC double glazing

Ample Storage

Communal garden & drying area

Close to Town Centre/Train Station  
and Village

Close to all major bus routes and  
transport links

## **East Kilbride's Local Estate Agent**

[www.joyceheepshomes.com](http://www.joyceheepshomes.com)  
[info@joyceheepshomes.co.uk](mailto:info@joyceheepshomes.co.uk)

**Joyce Heeps Homes Ltd**

E.K. Business Park  
14 Stroud Road  
East Kilbride  
G75 0YA



**Joyce Heeps  
HOMES**

01355 571883

**Description**

This ground floor flat would be ideal for someone looking to downsize or for a first-time buyer. It is within a very well block and is situated very close to East Kilbride Town Centre.



**East Kilbride's Local Estate Agent**

[www.joyceheepshomes.com](http://www.joyceheepshomes.com)  
[info@joyceheepshomes.co.uk](mailto:info@joyceheepshomes.co.uk)

**Joyce Heeps Homes Ltd**

E.K. Business Park  
14 Stroud Road  
East Kilbride  
G75 0YA



**Joyce Heeps  
HOMES**

01355 571883

It comprises of welcoming entrance hallway with ample storage, bright and spacious lounge which leads to sun balcony, two double bedrooms, modern fitted kitchen and walk in shower room.



**East Kilbride's Local Estate Agent**

[www.joyceheepshomes.com](http://www.joyceheepshomes.com)  
[info@joyceheepshomes.co.uk](mailto:info@joyceheepshomes.co.uk)



**Joyce Heeps Homes Ltd**  
E.K. Business Park  
14 Stroud Road  
East Kilbride  
G75 0YA



The kitchen has a range of white base and wall cabinets and has space for all freestanding appliances.



**East Kilbride's Local Estate Agent**

[www.joyceheepshomes.com](http://www.joyceheepshomes.com)  
[info@joyceheepshomes.co.uk](mailto:info@joyceheepshomes.co.uk)

**Joyce Heeps Homes Ltd**

E.K. Business Park  
14 Stroud Road  
East Kilbride  
G75 0YA



**Joyce Heeps  
HOMES**

01355 571883

The property is decorated in neutral tones throughout, has gas central heating, UPVC double-glazing and sun balcony.



**East Kilbride's Local Estate Agent**

[www.joyceheepshomes.com](http://www.joyceheepshomes.com)  
[info@joyceheepshomes.co.uk](mailto:info@joyceheepshomes.co.uk)

**Joyce Heeps Homes Ltd**  
E.K. Business Park  
14 Stroud Road  
East Kilbride  
G75 0YA



**East Kilbride's Local Estate Agent**

[www.joyceheepshomes.com](http://www.joyceheepshomes.com)  
[info@joyceheepshomes.co.uk](mailto:info@joyceheepshomes.co.uk)



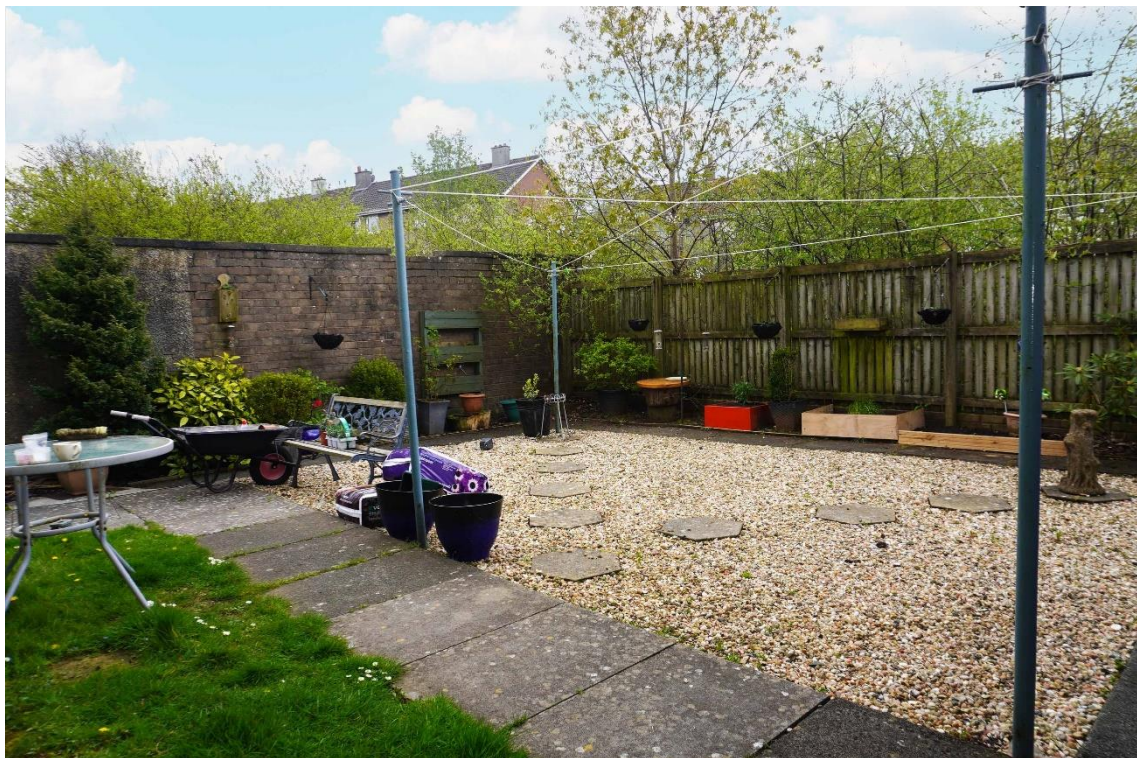
**Joyce Heeps Homes Ltd**  
E.K. Business Park  
14 Stroud Road  
East Kilbride  
G75 0YA



**The council tax band is B**

### **Location**

The property is situated close to East Kilbride's main shopping centre, Train Station, and Village. There are a wide variety of bars and restaurants and all local amenities, regular bus and rail services connecting to Glasgow and other destinations throughout West and Central Scotland and an impressive range of entertainment and sporting facilities.



### **Measurements**

Lounge	18'3" x 10'11"	Bedroom 2	11'6" x 7'1"
Kitchen	9'5" x 6'10"	Bathroom	6'3" x 5'6"
Bedroom 1	13'2 x 11'		

**East Kilbride's Local Estate Agent**

[www.joyceheepshomes.com](http://www.joyceheepshomes.com)  
[info@joyceheepshomes.co.uk](mailto:info@joyceheepshomes.co.uk)

**Joyce Heeps Homes Ltd**  
E.K. Business Park  
14 Stroud Road  
East Kilbride  
G75 0YA



## **Joyce Heeps Homes Ltd.**

For more information or to advise your interest please contact:

**Joyce Heeps Homes Ltd**  
**East Kilbride Business Park**  
**Stroud Road**  
**East Kilbride**  
**G75 0YA**

**Tel: 01355 571 883**  
**Email: [joyce@joyceheepshomes.co.uk](mailto:joyce@joyceheepshomes.co.uk)**

Please note that this schedule has been prepared by us, based on the information provided by our client. Photographs and text are for illustrative purposes only. We believe them to be correct, however, no guarantee is offered or implied. If there is any aspect of this schedule that you wish clarified or that you find misleading, please contact our office where further information is available.

No tests have been made of services, equipment or fittings. No warranty is given or implied as to the condition of buildings services, fixtures, fittings etc. All measurements, distances and acres are approximate. Fixtures, fittings and other items are not included unless specified.



# **East Kilbride's Local Estate Agent**

[www.joyceheepshomes.com](http://www.joyceheepshomes.com)  
[info@joyceheepshomes.co.uk](mailto:info@joyceheepshomes.co.uk)