



## 49 RYELANDS STREET HEREFORD HR4 0LN

£275,000  
FREEHOLD

Situated in this popular residential location, a three bedroom end terraced property offering ideal first time buyer/ small family accommodation and being sold with the added benefit of no onward chain. The property benefits from two good sized reception rooms, downstairs w/c and utility area, two double bedrooms to the first floor with large family bathroom and a third bedroom to the second floor, to the rear a good sized south facing garden with side access. We highly recommend an internal inspection.





## 49 RYELANDS STREET

- End terraced house • Popular residential location • Three bedrooms, 2 receptions, downstairs W/C • Ideal first time buyer/ family home • Gas central heating & double glazing • Good sized south facing rear garden



### Full Description

Situated in this popular residential location, a three bedroom end terraced property offering ideal first time buyer/ small family accommodation and being sold with the added benefit of no onward chain. The property benefits from two good sized reception rooms, downstairs w/c and utility area, two double bedrooms to the first floor with large family bathroom and a third bedroom to the second floor, to the rear a good sized south facing garden with side access. We highly recommend an internal inspection.

### Ground floor

With recessed entrance porch and door leading into

### Entrance hall

With exposed floorboard, carpeted stairs leading up, ceiling light point and doors to

### Living room

With exposed wooden floorboards, exposed feature brickwork, coving, double glazed bay window to the front aspect and radiator.

### Dining room

With exposed wooden floorboards, cast iron radiator, brick feature fireplace surround and tiled hearth, double glazed window, built in storage cupboard, useful under stair storage cupboard, three hanging ceiling lights and opening into the

### Kitchen

Fitted with matching wall and base units, ample work

surface space, stainless steel 1 1/2 bowl sink and drainer unit, free standing electric cooker, space for freestanding fridge/freezer, tiled floor and tiled splash backs, recess spotlights, radiator, double glazed window and door to the rear and door with step down into the

### Utility room

With work surface space, under counter space for washing machine and tumble dryer, radiator, wall mounted gas central heating boiler, door into the downstairs w/c and french doors into the

### Conservatory

With wood effect flooring, power points, double glazed windows and sliding door to the garden.

### Downstairs W/C

With low flush w/c, wash hand basin, tiled floor and ceiling light point.

### First floor landing

With exposed floorboard, recess spotlights, door leading to the loft room with a under stair storage area and doors to

### Bedroom 1

With fitted carpet, cast iron radiator, ceiling light point, double glazed window to the front aspect and oak doors leading into two large wardrobe cupboards.

### Bedroom 2

With fitted carpet, double glazed window, ceiling light point, cast iron radiator and coving.

### Bathroom

A full suite comprising large white bath, fitted shower cubicle with mains fitment shower head over, low flush w/c, wash hand basin, upright radiator, tiled floor and part tiled surround, double glazed window, recess spotlights.

### With stairs leading up to the

### Bedroom 3

With fitted carpet, three velux window, feature brickwork, hanging rails and storage space within the eaves,

### Outside

To the front a small courtyard laid to stone with iron gate opening onto the pathway to the front door and one to the side access gate. To the rear a fantastic south east facing rear garden, with paved patio area perfect for entertaining with steps leading down to the remainder of the garden which is mostly laid to lawn and enclosed by hedging and fencing. To the rear of the garden there is a further raised decked area leading to a timber frame cabin requiring finishing but making an ideal home office or entertaining space. To the side there is an access leading to the rear.

### Services

Mains water, electricity, drainage and gas are connected. Gas-fired central heating. Telephone (subject to transfer regulations).

Outgoings-Council tax band C - £2,177 for 2025/2026 Water and drainage rates are payable.

### Directions

From Greyfriars Bridge in Hereford city centre proceed north and at the traffic lights turn left into Eign Street, which continues into Whitecross Road. Take the 2nd turning left into Ryelands Street, and the property will be found about 200 yards along on the left-hand side a short distance after the mini roundabout.

### Agents note

Please note that throughout the property, there are works required to finish certain rooms.

### Money Laundering

Prospective purchasers will be asked to produce identification, address verification and proof of funds at the time of making an offer.

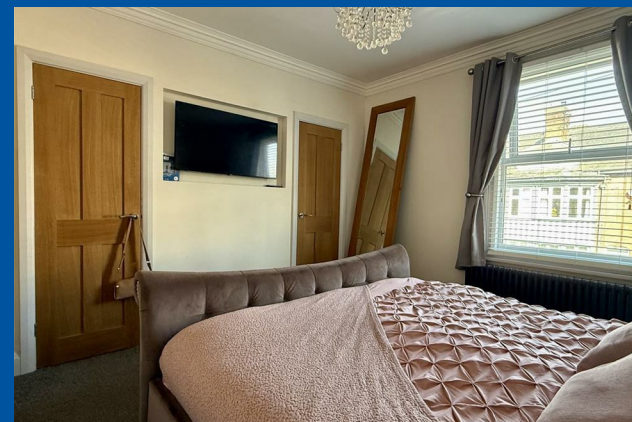
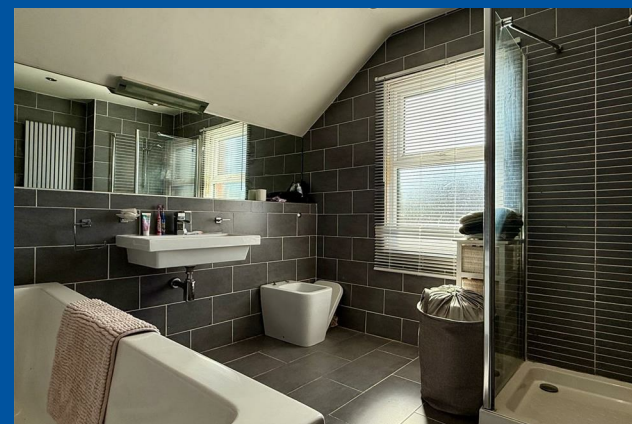
### Viewing Arrangements

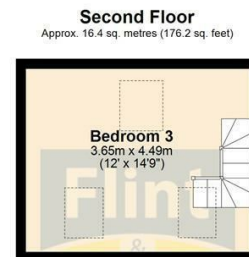
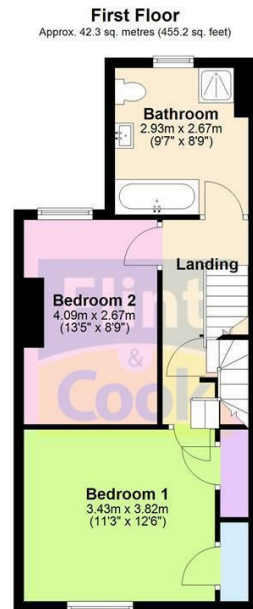
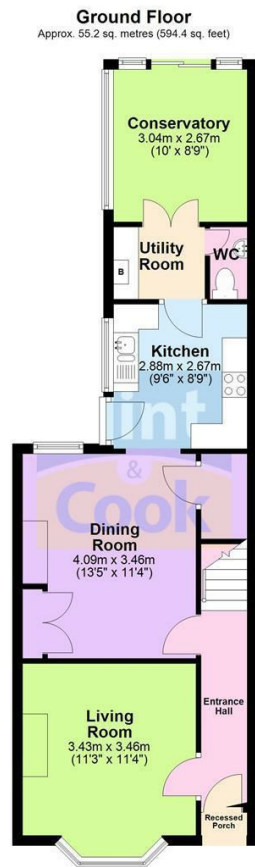
Strictly by appointment through the Agent (01432) 355455.

### Opening Hours

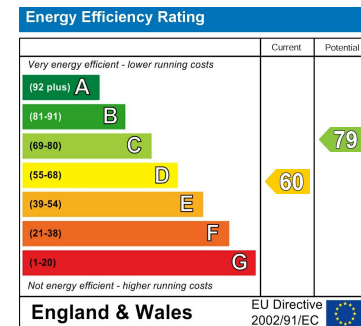
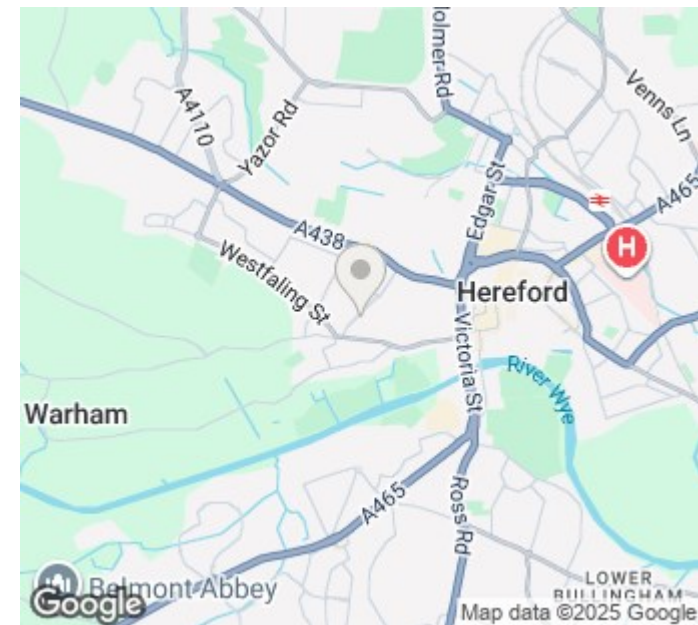
Monday - Friday	9.00 am - 5.30 pm
Saturday	9.00 am - 1.00 pm

## 49 RYELANDS STREET





Total area: approx. 113.9 sq. metres (1225.8 sq. feet)



**EPC Rating: D Council Tax Band: C**

Agents Note: Whilst every care has been taken to prepare these particulars, they are for guidance purposes only. All measurements are approximate and are for general guidance purposes only and whilst every care has been taken to ensure their accuracy, they should not be relied upon and potential buyers/tenants are advised to recheck the measurements

Flint and Cook Hereford Sales  
22 Broad Street  
Hereford  
Herefordshire  
HR4 9AP

01432 355455  
hereford@flintandcook.co.uk  
flintandcook.co.uk

