



Landford Road

London, SW15

£21,666.67 per month

One of the finest homes to come to the market in Putney in recent years. This 4000 sq ft gem is ideal for a family looking for high-end short term accommodation.

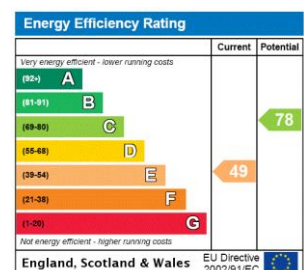


Landford Road

London, SW15



Minimum Term: 12 months
Deposit Required: 6 weeks
Local Authority: Wandsworth
Council Tax Band: G
EPC Rating: E
Furnished



Chestertons Putney Lettings

153 Upper Richmond Road
 Putney
 London
 SW15 2TX
 lettings.putney@chestertons.com
 02087041000
 chestertons.com

Additional tenant charges apply (fees apply to non-AST tenancies only)
 Tenancy Agreement Fee: £300
 References per Tenant/Guarantor: £60
 Inventory check (approx. £100 – £250 inc. VAT)
[chestertons.com/property-to-rent/applicable-fees](https://www.chestertons.com/property-to-rent/applicable-fees)

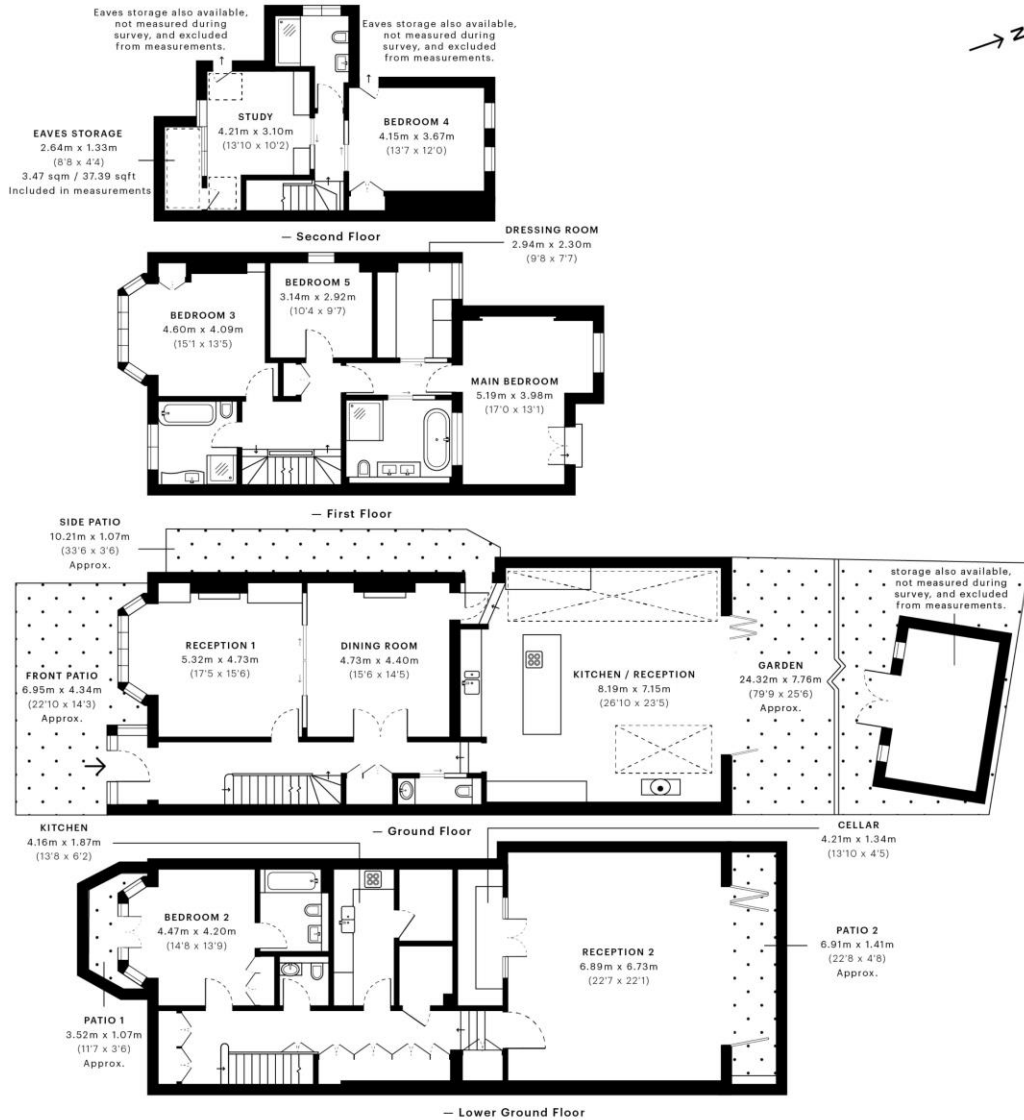


Landford Road, SW15

CAPTURE DATE 01/12/2022 LASER SCAN POINTS 278,001,814

GROSS INTERNAL AREA

362.70 sqm / 3904.07 sqft



GROSS INTERNAL AREA (GIA)
The footprint of the property
362.70 sqm / 3904.07 sqft

NET INTERNAL AREA (NIA)
Excludes walls and external features
Includes warehouses, restricted head height
331.35 sqm / 3566.62 sqft

EXTERNAL STRUCTURAL FEATURES
Balconies, terraces, verandas etc.
0.00 sqm / 0.00 sqft

RESTRICTED HEAD HEIGHT
Limited use area under 1.5m
5.24 sqm / 56.40 sqft



Spec Verified floor plans are produced in accordance with Royal Institution of Chartered Surveyors' Property Measurement Standards. Plots and gardens are illustrative only and excluded from all area calculations. Due to rounding, numbers may not add up precisely. All measurements shown for the individual room lengths and widths are the maximum points of measurements captured in the scan.

IPMS 2B RESIDENTIAL 362.70 sqm / 3904.07 sqft
IPMS 3C RESIDENTIAL 336.69 sqm / 3626.10 sqft

SPEC ID 56380b870df75490dd41ab5d5

Chesterton Global Ltd trading as Chestertons for themselves and for the vendor of this property whose agents they are, give notice that (i) these particulars do not constitute any part of an offer or contract, (ii) all statements contained within these particulars are made without responsibility on the part of Chestertons or the vendor, (iii) whilst made in good faith, none of the statements contained within these particulars are to be relied upon as a statement or representation of fact, (iv) any intending purchasers must satisfy themselves by inspection or otherwise as to the correctness of each of the statements contained within these particulars, (v) the vendor does not make or give either Chestertons or any person in their employment any authority to make or give representation or warranty whatsoever in relation to this property. Wide angle lenses may be used. ©Copyright Chestertons | Chesterton Global Ltd | Registered Office 40 Connaught Street, Hyde Park, London W2 2AB Registered Company Number 05334580.

