



Moreton Terrace Mews South

London, SW1V

£5,000 per month
(£1,153.85 per week)

A stunning duplex three double bedrooms, three bathrooms property located in a charming cobbled mews in Pimlico. The property also benefits three bathrooms, large living area featuring wooden and stone floors throughout.



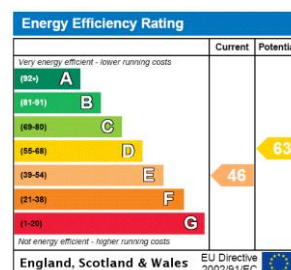
Moreton Terrace Mews South

London, SW1V

- Three Double Bedroom
- Three Bathroom
- Wooden Flooring
- Furnished
- Quiet Mews
- Suitable For Sharers



Minimum Term: 12 months
Deposit Required: £6,923.08
Local Authority: City of Westminster
Council Tax Band: G
EPC Rating: E
Furnished



Chestertons Westminster & Pimlico Lettings

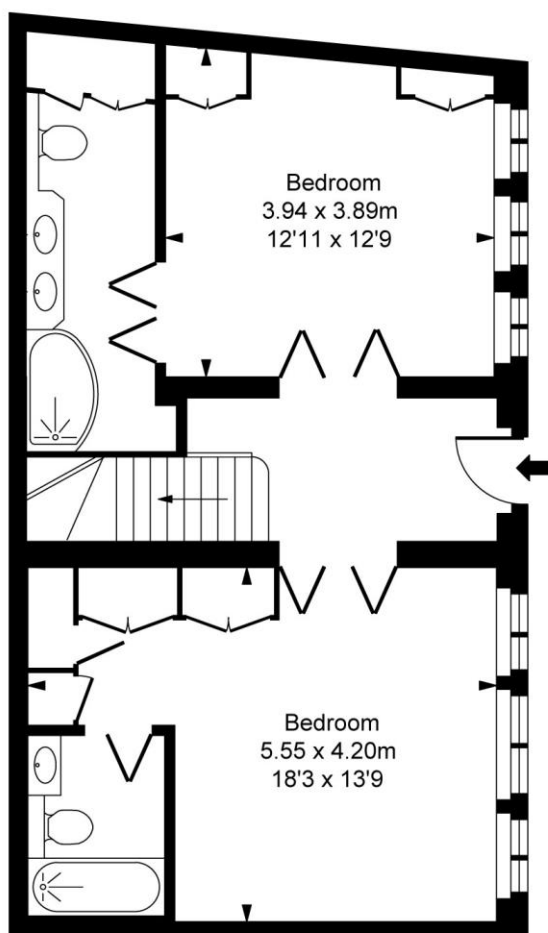
105 Wilton Road
 London
 SW1V 1DZ
westminster@chestertons.co.uk
 02030408220
chestertons.co.uk

Additional tenant charges apply (fees apply to non-AST tenancies only)
 Tenancy Agreement Fee: £300
 References per Tenant/Guarantor: £60
 Inventory check (approx. £100 – £250 inc. VAT)
chestertons.co.uk/property-to-rent/applicable-fees

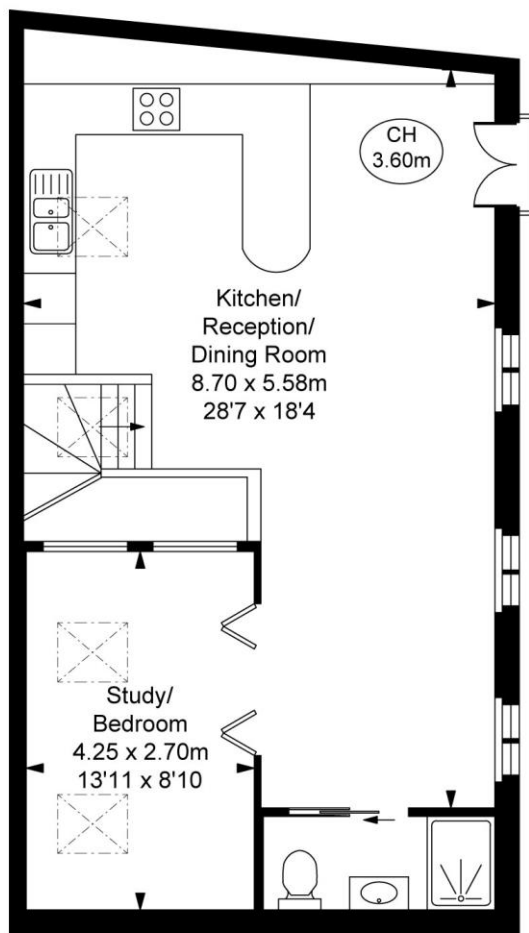
Moreton Terrace Mews South, SW1V

Approximate Gross Internal Area
113.85 sq m / 1,225 sq ft

(CH = Ceiling Heights)



Ground Floor
Approximate Gross Internal Area
57.18 sq m / 615 sq ft



First Floor
Approximate Gross Internal Area
56.67 sq m / 610 sq ft

This plan is not to scale. It is for guidance and not for valuation purposes.
All measurements and areas are approximate only, and have been prepared in accordance with the current edition of the RICS Code of Measuring Practice.
© Fulham Performance

