



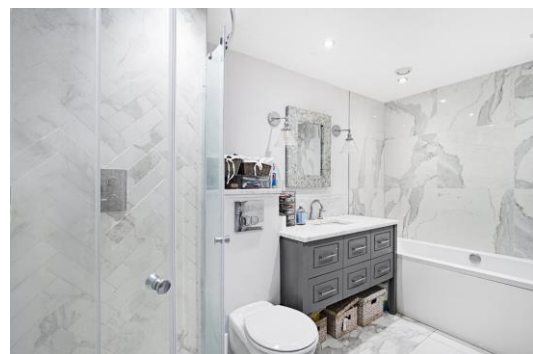
# Ashgrove House

Bessborough Gardens, SW1V

£4,000 per month  
(£923.08 per week)

This attractive two-bedroom apartment offers a principal double bedroom with en-suite bathroom, a further double bedroom, an additional bathroom, a generously sized reception room, and a semi open-plan kitchen. Offered unfurnished.

**CHESTERTONS**



# Ashgrove House

Bessborough Gardens, SW1V

- Access To Bessborough Gardens
- Open Plan Kitchen/Living Area
- Unfurnished
- Modern Throughout
- Private Parking
- Porter





This attractive two-bedroom apartment is situated within a portered development opposite Pimlico Underground Station, offering a principal double bedroom with en-suite bathroom, a further double bedroom, an additional bathroom, a generously sized reception room, and a semi open-plan kitchen. The development comes with private parking and 24/hrs concierge.

Ashgrove House is excellently located for the shops, restaurants and cafes of Pimlico and Belgravia and allows for easy access to the transport links of Victoria (Victoria, Circle and District underground lines, Mainline station and Gatwick Express).

**Minimum Term:** 12 months  
**Deposit Required:** £0.00  
**Local Authority:**  
**Council Tax Band:**  
**EPC Rating:** B  
**Unfurnished**

Score	Energy rating	Current	Potential
92+	A		
81-91	B	81 B	83 B
69-80	C		
55-68	D		
39-54	E		
21-38	F		
1-20	G		

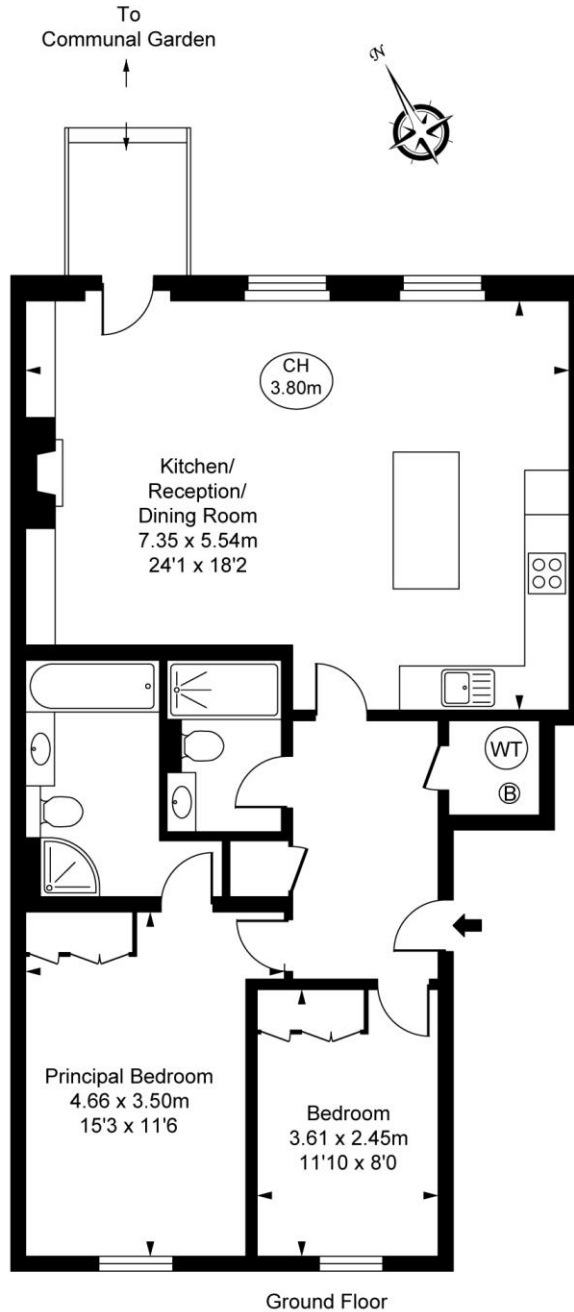
### *Chestertons Westminster & Pimlico Lettings*

105 Wilton Road  
 London  
 SW1V 1DZ  
[westminsterlettingsusers@chestertons.co.uk](mailto:westminsterlettingsusers@chestertons.co.uk)  
 02030408220  
[chestertons.co.uk](http://chestertons.co.uk)

Additional tenant charges apply (fees apply to non-AST tenancies only)  
 Tenancy Agreement Fee: £300  
 References per Tenant/Guarantor: £60  
 Inventory check (approx. £100 – £250 inc. VAT)  
[chestertons.co.uk/property-to-rent/applicable-fees](http://chestertons.co.uk/property-to-rent/applicable-fees)

**Ashgrove House,  
Bessborough Gardens, SW1V**

Approximate Gross Internal Area  
**84.06 sq m / 905 sq ft**  
( CH = Ceiling Heights )



This plan is not to scale. It is for guidance and not for valuation purposes.  
All measurements and areas are approximate only, and have been prepared in accordance with the current edition of the RICS Code of Measuring Practice.  
© Fulham Performance

Chesterton UK Services Limited trading as Chestertons for themselves and for the vendor of this property whose agents they are, give notice that (i) these particulars do not constitute any part of an offer or contract, (ii) all statements contained within these particulars are made without responsibility on the part of Chestertons or the vendor, (iii) whilst made in good faith, none of the statements contained within these particulars are to be relied upon as a statement or representation of fact, (iv) any intending purchasers must satisfy themselves by inspection or otherwise as to the correctness of each of the statements contained within these particulars, (v) the vendor does not make or give either Chestertons or any person in their employment any authority to make or give representation or warranty whatsoever in relation to this property. Wide angle lenses may be used. ©Copyright Chestertons | Chesterton Global Ltd | Registered Office 40 Connaught Street, Hyde Park, London W2 2AB Registered Company Number 05334580.



This paper is  
100% recyclable