



St Georges Square

London, SW1V

£2,475 per month
(£571.15 per week)

The apartment benefits from a naturally bright reception room, open plan fitted kitchen, a quiet double bedroom to the back of the apartment and serviced by a bathroom with shower over the bath. Exclusive to Chestertons.



St Georges Square

London, SW1V

•



Freshly decorated one bedroom apartment on the second floor of this beautiful stucco fronted building with views across St George's Square gardens. The apartment benefits from a naturally bright reception room, open plan fitted kitchen, a quiet double bedroom to the back of the apartment and serviced by a bathroom with shower over the bath. Located on St George's Square the property has access to the gardens and is well situated to benefit from transport facilities of both Pimlico and Victoria.
Exclusive to Chesterton's.

Our China Desk is here for you, if Chinese is your preferred language, please get in touch via WeChat (ChestertonsChinaDesk)

Minimum Term: months
Deposit Required: £0.00
Local Authority:
Council Tax Band:
EPC Rating: D
Furnished

Chestertons Westminster & Pimlico Lettings

105 Wilton Road
London
SW1V 1DZ
westminster@chestertons.co.uk
02030408220
chestertons.co.uk

Additional tenant charges apply (fees apply to non-AST tenancies only)
Tenancy Agreement Fee: £300
References per Tenant/Guarantor: £60
Inventory check (approx. £100 – £250 inc. VAT)
chestertons.co.uk/property-to-rent/applicable-fees

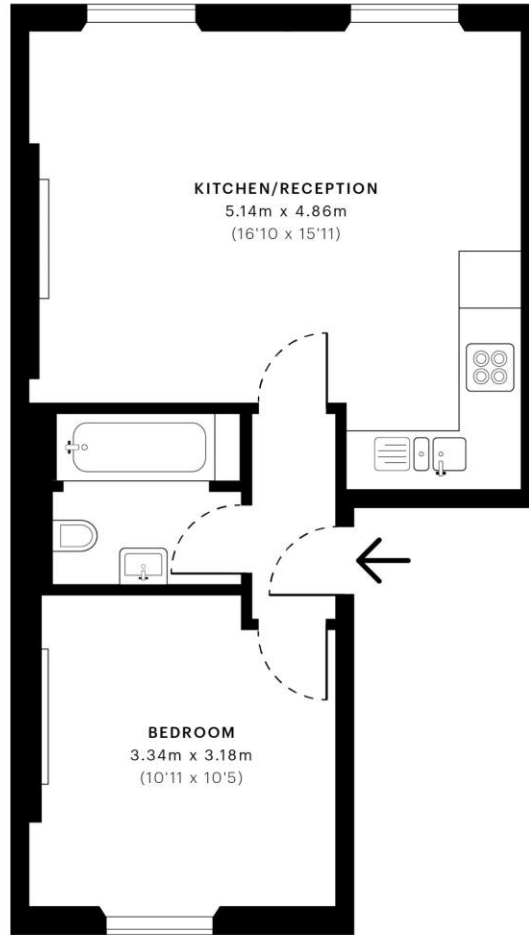


St. Georges Square, SW1V

CAPTURE DATE 10/12/2021 LASER SCAN POINTS 1,118,114

GROSS INTERNAL AREA

37.99 sqm / 408.92 sqft



— Second Floor

 GROSS INTERNAL AREA (GIA)
The footprint of the property
37.99 sqm / 408.92 sqft

 NET INTERNAL AREA (NIA)
Excludes walls and external features
Includes washrooms, restricted head height
36.44 sqm / 392.24 sqft

 EXTERNAL STRUCTURAL FEATURES
Balconies, terraces, verandas etc.
0.00 sqm / 0.00 sqft

 RESTRICTED HEAD HEIGHT
Limited use area under 1.5 m
0.00 sqm / 0.00 sqft



Spec Verified floor plans are produced in accordance with Royal Institution of Chartered Surveyors' Property Measurement Standards. Plots and gardens are illustrative only and excluded from all area calculations. Due to rounding, numbers may not add up precisely. All measurements shown for the individual room lengths and widths are the maximum points of measurements captured in the scan.

IPMS 3B RESIDENTIAL 37.63 sqm / 405.05 sqft
IPMS 3C RESIDENTIAL 36.72 sqm / 395.25 sqft

SPEC ID 61b1eb90412ac40dd05995c5

