



Tounson Court  
Montaigne Close, SW1P





## SHORT LET

With a spacious kitchen and living space, a master bedroom with en-suite shower room, a second bedroom, third smaller room and a balcony with Gym, Jacuzzi and secure parking space.

- Short Let
- Gated development
- 3 Bedrooms, 2 Bathrooms, 1 Reception
- Gym, Sauna and Jacuzzi
- 24 hour concierge
- Secure private parking space

### £5,750 pcm


Additional tenant charges apply (fees apply to non-AST tenancies only)

Tenancy Agreement Fee: £300

References per Tenant/Guarantor: £60

Inventory check (approx. £100 – £250 inc. VAT)

[chestertons.co.uk/property-to-rent/applicable-fees](http://chestertons.co.uk/property-to-rent/applicable-fees)

Energy Efficiency Rating		Current	Potential
Very energy efficient - lower running costs			
(90-100) A			
(81-90) B			
(71-80) C		72	82
(61-70) D			
(51-60) E			
(41-50) F			
(31-40) G			
Not energy efficient - higher running costs			
England, Scotland & Wales		EU Directive 2002/91/EC	

**Minimum Term:** 1 months  
**Deposit Required:** 4 weeks  
**Local Authority:** Westminster  
**Council Tax Band:** G  
**EPC Rating:** B  
**Furnished**

### Chestertons Westminster & Pimlico Lettings

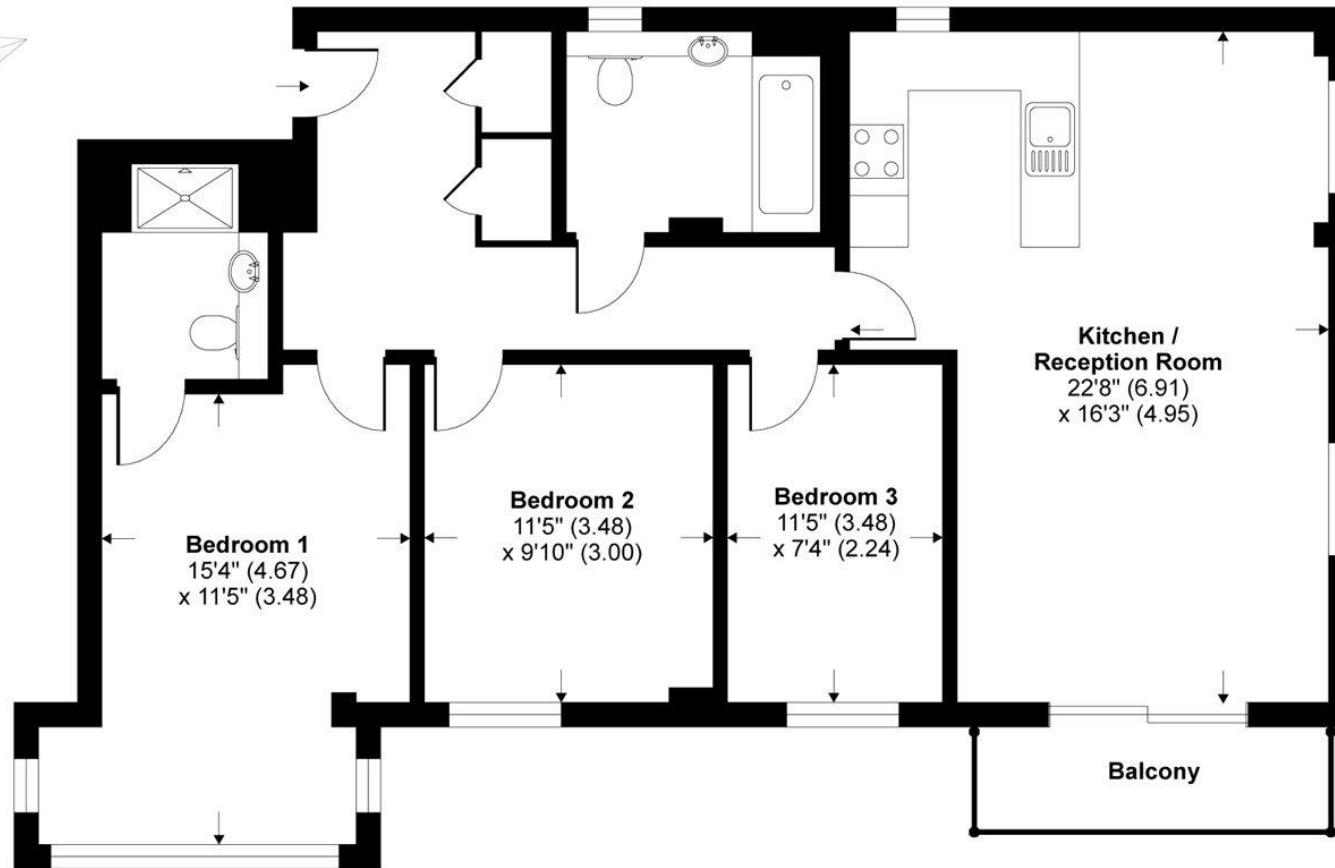
105 Wilton Road  
 London  
 SW1V 1DZ

[westminsterlettingsusers@chestertons.co.uk](mailto:westminsterlettingsusers@chestertons.co.uk)

02030408220

[chestertons.co.uk](http://chestertons.co.uk)

# Tounson Court, Montaigne Close, London, SW1P



## FIRST FLOOR

**TOTAL GROSS INTERNAL FLOOR AREA 982 SQ FT 91.2 SQ METRES**

Whilst every attempt has been made to ensure the accuracy of the floor plan contained here, measurements of doors, windows and rooms are approximate and no responsibility is taken for any error, omission or misstatement. These plans are for representation purposes only as defined by RICS Code of Measuring Practice and should be used as such by any prospective purchaser. Specifically no guarantee is given on the total square footage of the property if quoted on this plan. Any figure given is for initial guidance only and should not be relied on as a basis of valuation.

Copyright nichecom.co.uk 2015 Produced for Chesterton Humberts REF : 33609

Chesterton UK Services Limited trading as Chestertons for themselves and for the vendor of this property whose agents they are, give notice that (i) these particulars do not constitute any part of an offer or contract, (ii) all statements contained within these particulars are made without responsibility on the part of Chestertons or the vendor, (iii) whilst made in good faith, none of the statements contained within these particulars are to be relied upon as a statement or representation of fact, (iv) any intending purchasers must satisfy themselves by inspection or otherwise as to the correctness of each of the statements contained within these particulars, (v) the vendor does not make or give either Chestertons or any person in their employment any authority to make or give representation or warranty whatsoever in relation to this property. Wide angle lenses may be used. ©Copyright Chestertons | Chesterton Global Ltd | Registered Office 40 Connaught Street, Hyde Park, London W2 2AB Registered Company Number 05334580.



This paper is  
100% recyclable