



Lewcos House
57-63 Regency Street, SW1P

CHESTERTONS





A well laid-out two double bedroom apartment within a popular modern block in the heart of Westminster further comprising two bathrooms, reception room and eat-in kitchen.

- 2 double bedrooms
- Lift
- Parking
- Great Westminster location

£4,500 pcm

Additional tenant charges apply (fees apply to non-AST tenancies only)

Tenancy Agreement Fee: £300

References per Tenant/Guarantor: £60

Inventory check (approx. £100 – £250 inc. VAT)

chestertons.co.uk/property-to-rent/applicable-fees

Energy Efficiency Rating		Current	Potential
90-100	A		
81-90	B		
71-80	C	77	83
61-70	D		
51-60	E		
41-50	F		
1-40	G		

Not energy efficient - higher running costs

EU Directive 2002/91/EC

England, Scotland & Wales

Minimum Term: 3 months
Deposit Required: Four weeks
Local Authority: Westminster
Council Tax Band: G
EPC Rating: C
Furnished

Chestertons Westminster & Pimlico Lettings

105 Wilton Road
 London
 SW1V 1DZ

westminsterlettingsusers@chestertons.co.uk

02030408220

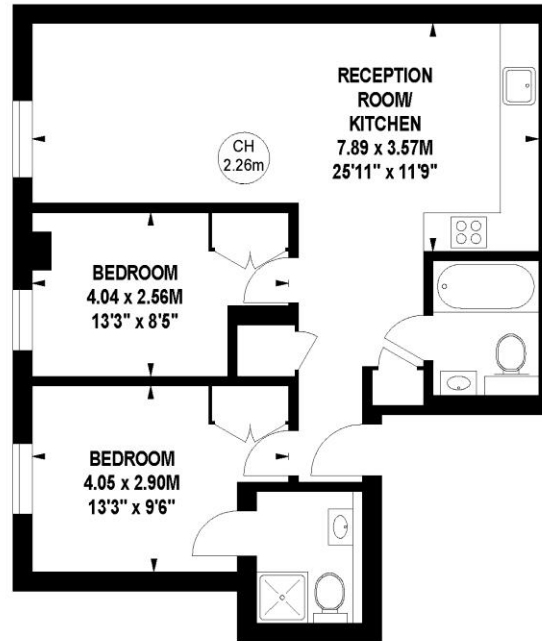
chestertons.co.uk

Lewcos House, SW1P

Approximate gross internal area

61.40 sq m / 661 sq ft

Key :
CH - Ceiling Height



Second Floor

The floor plan is not to scale and measurements and areas shown are approximate and therefore should be used for illustrative purposes only. The plan has been prepared in accordance with the RICS code of Measuring Practice and whilst we have confidence in the information produced, it must not be relied on.

If there is any aspect of particular importance, you should carry out or commission your own inspection of the property.

Copyright of FeaturePRO.

