



Asquith House
27 Monck Street, SW1P





A large two double bedrooms, two bathrooms (both en-suites) large reception with wood floors leading onto a balcony, modern kitchen, excellent storage and a guests cloakroom. Further benefits include air conditioning, parking and concierge.

- A large apartment on the fourth floor
- 2 Bedrooms, 2 Bathrooms, 1 Reception
- Underground parking Air conditioning
- Concierge

£4,000 pcm

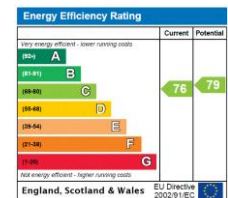
Additional tenant charges apply (fees apply to non-AST tenancies only)

Tenancy Agreement Fee: £300

References per Tenant/Guarantor: £60

Inventory check (approx. £100 – £250 inc. VAT)

chestertons.co.uk/property-to-rent/applicable-fees

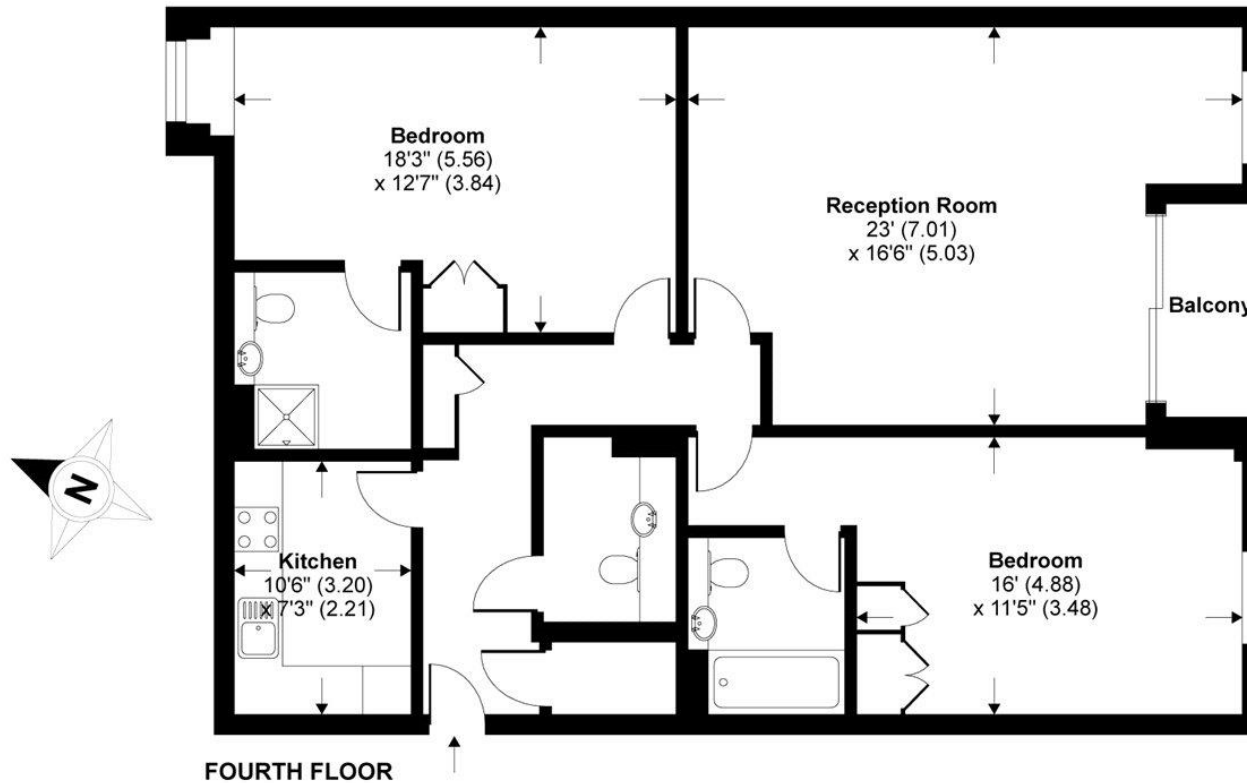


Minimum Term: 12 months
Deposit Required: 5 weeks
Local Authority: City of Westminster
Council Tax Band: G
EPC Rating: C
Furnished

Chestertons Westminster & Pimlico Lettings

105 Wilton Road
 London
 SW1V 1DZ
westminster@chestertons.co.uk
 02030408220
chestertons.co.uk

Asquith House, Monck Street, London, SW1



TOTAL GROSS INTERNAL FLOOR AREA 1156 SQ FT 107.3 SQ METRES

Whilst every attempt has been made to ensure the accuracy of the floor plan contained here, measurements of doors, windows and rooms are approximate and no responsibility is taken for any error, omission or misstatement. These plans are for representation purposes only as defined by RICS Code of Measuring Practice and should be used as such by any prospective purchaser. Specifically no guarantee is given on the total square footage of the property if quoted on this plan. Any figure given is for initial guidance only and should not be relied on as a basis of valuation.

Copyright nichecom.co.uk 2014 Produced for Chesterton Humberts REF : 691280

Chesterton Global Ltd trading as Chestertons for themselves and for the vendor of this property whose agents they are, give notice that (i) these particulars do not constitute any part of an offer or contract, (ii) all statements contained within these particulars are made without responsibility on the part of Chestertons or the vendor, (iii) whilst made in good faith, none of the statements contained within these particulars are to be relied upon as a statement or representation of fact, (iv) any intending purchasers must satisfy themselves by inspection or otherwise as to the correctness of each of the statements contained within these particulars, (v) the vendor does not make or give either Chestertons or any person in their employment any authority to make or give representation or warranty whatsoever in relation to this property. Wide angle lenses may be used. ©Copyright Chestertons | Chesterton Global Ltd | Registered Office 40 Connaught Street, Hyde Park, London W2 2AB Registered Company Number 05334580.



This paper is
100% recyclable