



Eccleston Square
Pimlico, SW1V

CHESTERTONS





A fantastic top floor apartment with decked terrace with views. This apartment benefits from a tiled bathroom with a spa shower with a Jacuzzi bath, kitchen, bedroom and a bright reception with wooden flooring. Access to Eccleston Square gardens.

- Penthouse Apartment
- Access to Eccleston Square gardens
- Stunning Position Overlooking Eccleston Square
- Wooden Floors Throughout

£3,200 pcm

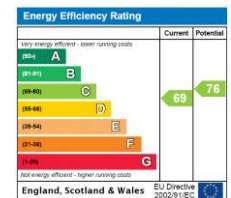
Additional tenant charges apply (fees apply to non-AST tenancies only)

Tenancy Agreement Fee: £300

References per Tenant/Guarantor: £60

Inventory check (approx. £100 – £250 inc. VAT)

chestertons.co.uk/property-to-rent/applicable-fees



Minimum Term: 6 months
Deposit Required: 5 weeks
Local Authority: Westminster
Council Tax Band: F
EPC Rating: C
Furnished

Chestertons Westminster & Pimlico Lettings

105 Wilton Road
 London
 SW1V 1DZ

westminsterlettingsusers@chestertons.co.uk

02030408220

chestertons.co.uk

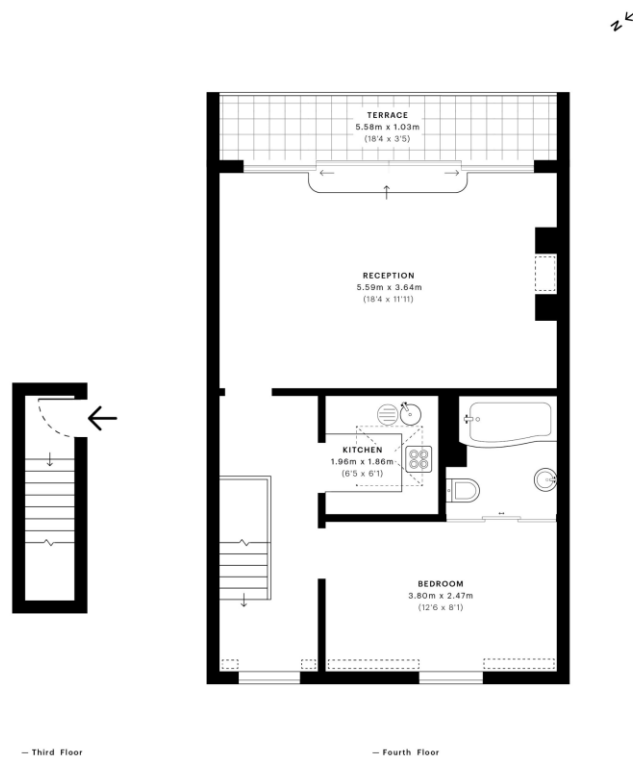


Eccleston Square, SW1V

CAPTURE DATE 10/02/2022 LABER SCAN POINTS 2,122,249

GROSS INTERNAL AREA

48.95 sqm / 526.89 sqft



GROSS INTERNAL AREA (GIA)
The footprint of the property
48.95 sqm / 526.89 sqft

NET INTERNAL AREA (NIA)
Excludes walls and external features
includes washrooms, restricted head height
44.55 sqm / 479.53 sqft

EXTERNAL STRUCTURAL FEATURES
Balconies, terraces, verandas etc.
5.71 sqm / 61.46 sqft

RESTRICTED HEAD HEIGHT
Limited use area under 1.5m
0.82 sqm / 8.83 sqft



Spec Verified floor plans are produced in accordance with Royal Institution of Chartered Surveyors' Property Measurement Standards. Plots and gardens are illustrative only and excluded from all area calculations. Due to rounding, numbers may not add up precisely. All measurements shown for the individual room lengths and widths are the maximum points of measurements captured in the scan.

IPMS 3B RESIDENTIAL 52.54 sqm / 565.54 sqft
IPMS 3C RESIDENTIAL 50.34 sqm / 541.86 sqft
SPEC ID: 62012b88b8ac0c0db3f41b9

Chesterton UK Services Limited trading as Chestertons for themselves and for the vendor of this property whose agents they are, give notice that (i) these particulars do not constitute any part of an offer or contract, (ii) all statements contained within these particulars are made without responsibility on the part of Chestertons or the vendor, (iii) whilst made in good faith, none of the statements contained within these particulars are to be relied upon as a statement or representation of fact, (iv) any intending purchasers must satisfy themselves by inspection or otherwise as to the correctness of each of the statements contained within these particulars, (v) the vendor does not make or give either Chestertons or any person in their employment any authority to make or give representation or warranty whatsoever in relation to this property. Wide angle lenses may be used. ©Copyright Chestertons | Chesterton Global Ltd | Registered Office 40 Connaught Street, Hyde Park, London W2 2AB Registered Company Number 05334580.



This paper is
100% recyclable