



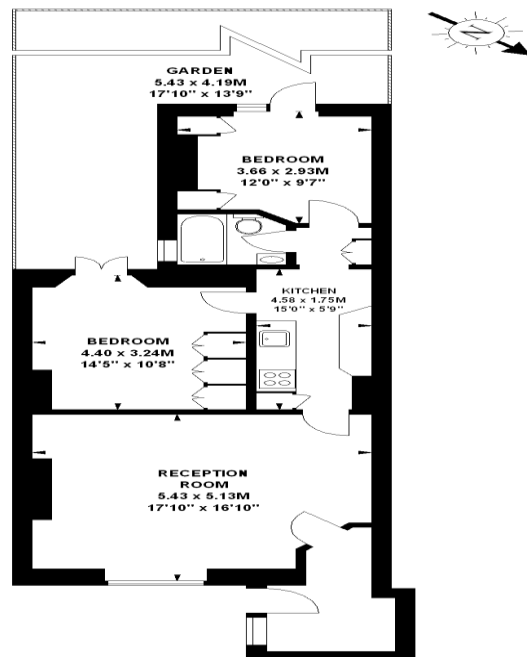
St Georges Drive  
Pimlico, SW1V

CHESTERTONS





**St, Georges Drive, SW1V**  
Approximate gross internal area  
**70.14 sq m / 755 sq ft**



**Lower Ground Floor**

The floor plan is not to scale and measurements and areas shown are approximate and therefore should be used for illustrative purposes only. The plan has been prepared in accordance with the RICS code of Measuring Practice and whilst we have confidence in the information produced, it must be not be relied on. If there is any aspect of particular importance, you should carry out or commission your own inspection of the property. Copyright of FeaturePRO.

The property has its own main entrance and benefits from two double bedrooms with built in storage, spacious reception with wooden floors leading onto a semi open plan kitchen, modern bathroom and private garden.

- Charming garden apartment in Pimlico
- 2 Bedrooms, 1 Bathroom, 1 Reception
- Private garden
- Available for short term lettings and inclusive of bills

**£3,300 pcm**

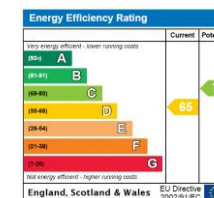
Additional tenant charges apply (fees apply to non-AST tenancies only)

Tenancy Agreement Fee: £300

References per Tenant/Guarantor: £60

Inventory check (approx. £100 – £250 inc. VAT)

[chestertons.co.uk/property-to-rent/applicable-fees](http://chestertons.co.uk/property-to-rent/applicable-fees)



**Minimum Term:** 12 months  
**Deposit Required:** 5 weeks  
**Local Authority:** Westminster  
**Council Tax Band:** D  
**EPC Rating:** D  
**Furnished**

*Chestertons Westminster & Pimlico Lettings*

105 Wilton Road  
London  
SW1V 1DZ

[westminsterlettingsusers@chestertons.co.uk](mailto:westminsterlettingsusers@chestertons.co.uk)

02030408220

[chestertons.co.uk](http://chestertons.co.uk)

Chesterton UK Services Limited trading as Chestertons for themselves and for the vendor of this property whose agents they are, give notice that (i) these particulars do not constitute any part of an offer or contract, (ii) all statements contained within these particulars are made without responsibility on the part of Chestertons or the vendor, (iii) whilst made in good faith, none of the statements contained within these particulars are to be relied upon as a statement or representation of fact, (iv) any intending purchasers must satisfy themselves by inspection or otherwise as to the correctness of each of the statements contained within these particulars, (v) the vendor does not make or give either Chestertons or any person in their employment any authority to make or give representation or warranty whatsoever in relation to this property. Wide angle lenses may be used. ©Copyright Chestertons | Chesterton Global Ltd | Registered Office 40 Connaught Street, Hyde Park, London W2 2AB Registered Company Number 05334580.



This paper is  
100% recyclable