



# Rosamond House

4 Elizabeth Court, SW1P

£6,911.67 per month  
(£1,595 per week)

Finished to a high standard, this lovely apartment offers great family space in a very central location. The property comprises three double bedrooms, 3 bathrooms, (2 en-suite) a large reception room and a fully fitted open plan kitchen with Siemens appliances.

Residents will benefit from have a 24 hour concierge service, a gym and also access to a roof garden with spectacular views of the London skyline and taking in iconic landmarks. You will be within easy reach of local amenities including shops and restaurants and the transport links of Victoria, St James's Park and Westminster are all within walking distance.

**CHESTERTONS**



# Rosamond House

4 Elizabeth Court, SW1P

- Spacious three bedroom property 1248 Sq feet
- Comfort cooling
- Underfloor heating
- Two winter gardens
- Communal roof terrace
- Residents only Gym
- Concierge





‘Finished to a high standard, this lovely apartment offers great family space in a very central location.’

**Minimum Term:** 12 months  
**Deposit Required:** £9,570.00  
**Local Authority:** City of Westminster  
**Council Tax Band:** G  
**EPC Rating:** B  
**Furnished**

Energy Efficiency Rating		
	Current	Potential
Very energy efficient - lower running costs		
<b>A</b> (92-100)		
<b>B</b> (81-91)	90	90
<b>C</b> (69-80)		
<b>D</b> (55-68)		
<b>E</b> (39-54)		
<b>F</b> (21-38)		
<b>G</b> (1-20)		
Not energy efficient - higher running costs		
England, Scotland & Wales EU Directive 2002/91/EC		

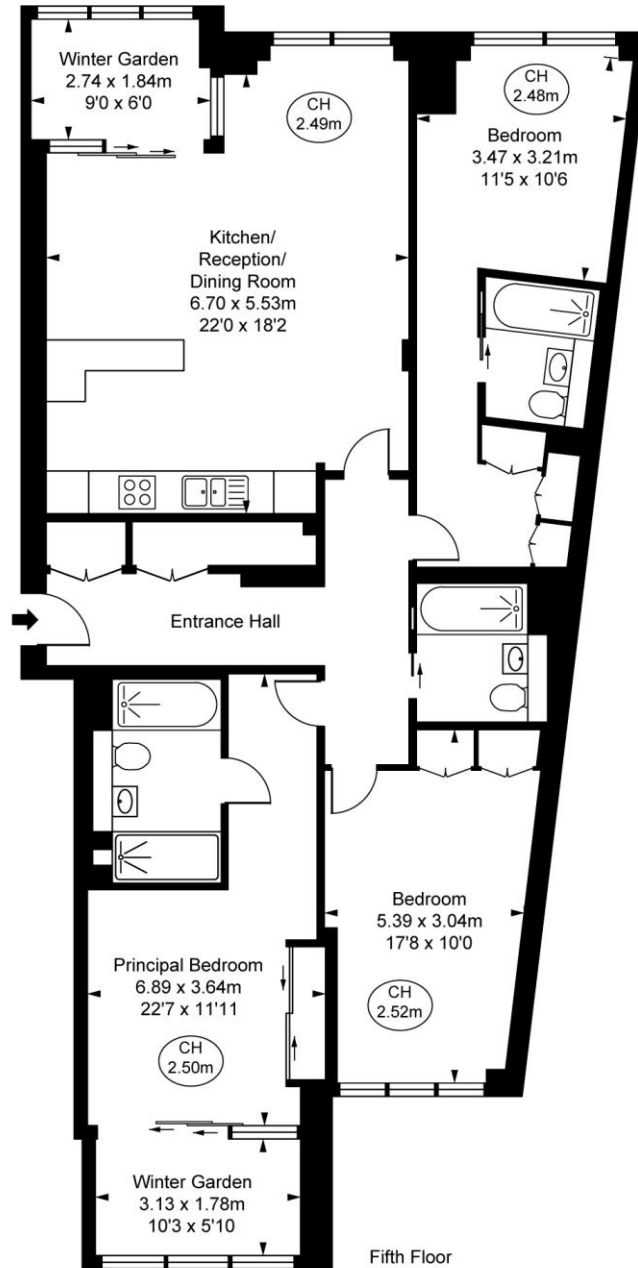
### *Chestertons Westminster & Pimlico Lettings*

105 Wilton Road  
 London  
 SW1V 1DZ  
[westminster@chestertons.co.uk](mailto:westminster@chestertons.co.uk)  
 02030408220  
[chestertons.co.uk](http://chestertons.co.uk)

Additional tenant charges apply (fees apply to non-AST tenancies only)  
 Tenancy Agreement Fee: £300  
 References per Tenant/Guarantor: £60  
 Inventory check (approx. £100 – £250 inc. VAT)  
[chestertons.co.uk/property-to-rent/applicable-fees](http://chestertons.co.uk/property-to-rent/applicable-fees)

**Rosamond House,  
Elizabeth Court, SW1P**  
Approximate Gross Internal Area  
**130.86 sq m / 1,409 sq ft**

( Including Winter Gardens  
10.49 sq m / 113 sq ft )  
( CH = Ceiling Heights )



This plan is not to scale. It is for guidance and not for valuation purposes.  
All measurements and areas are approximate only, and have been prepared in accordance with the current edition of the RICS Code of Measuring Practice.  
© Fulham Performance

Chesterton Global Ltd trading as Chestertons for themselves and for the vendor of this property whose agents they are, give notice that (i) these particulars do not constitute any part of an offer or contract, (ii) all statements contained within these particulars are made without responsibility on the part of Chestertons or the vendor, (iii) whilst made in good faith, none of the statements contained within these particulars are to be relied upon as a statement or representation of fact, (iv) any intending purchasers must satisfy themselves by inspection or otherwise as to the correctness of each of the statements contained within these particulars, (v) the vendor does not make or give either Chestertons or any person in their employment any authority to make or give representation or warranty whatsoever in relation to this property. Wide angle lenses may be used. ©Copyright Chestertons | Chesterton Global Ltd | Registered Office 40 Connaught Street, Hyde Park, London W2 2AB Registered Company Number 05334580.



This paper is  
100% recyclable