



Belgrave Road  
Pimlico, SW1V

CHESTERTONS









## VIDEO TOUR AVAILABLE

Two bedrooms apartment with a large reception room leading to a private patio, 2 double bedrooms, contemporary bathroom, separate WC and a separate kitchen. There is also an addition patio area and access to three storage vaults.

- Well presented two double bedrooms apartment
- 2 Bedrooms, 1 Bathroom, 1 Reception
- Addition patio area and access to two vaults
- Exclusive to Chestertons

### £2,750 pcm

Additional tenant charges apply (fees apply to non-AST tenancies only)

Tenancy Agreement Fee: £300

References per Tenant/Guarantor: £60

Inventory check (approx. £100 – £250 inc. VAT)

[chestertons.co.uk/property-to-rent/applicable-fees](https://chestertons.co.uk/property-to-rent/applicable-fees)

Energy Efficiency Rating		Current	Potential
95-100	A		
81-94	B		
69-80	C		
55-68	D		
39-54	E		
21-38	F		
1-20	G		
Not energy efficient - higher running costs			
England, Scotland & Wales		EU Directive 2002/91/EC	

**Minimum Term:** 12 months  
**Deposit Required:** 5 weeks  
**Local Authority:** Westminster  
**Council Tax Band:** E  
**EPC Rating:** C  
**Furnished**

### Chestertons Westminster & Pimlico Lettings

105 Wilton Road  
London  
SW1V 1DZ

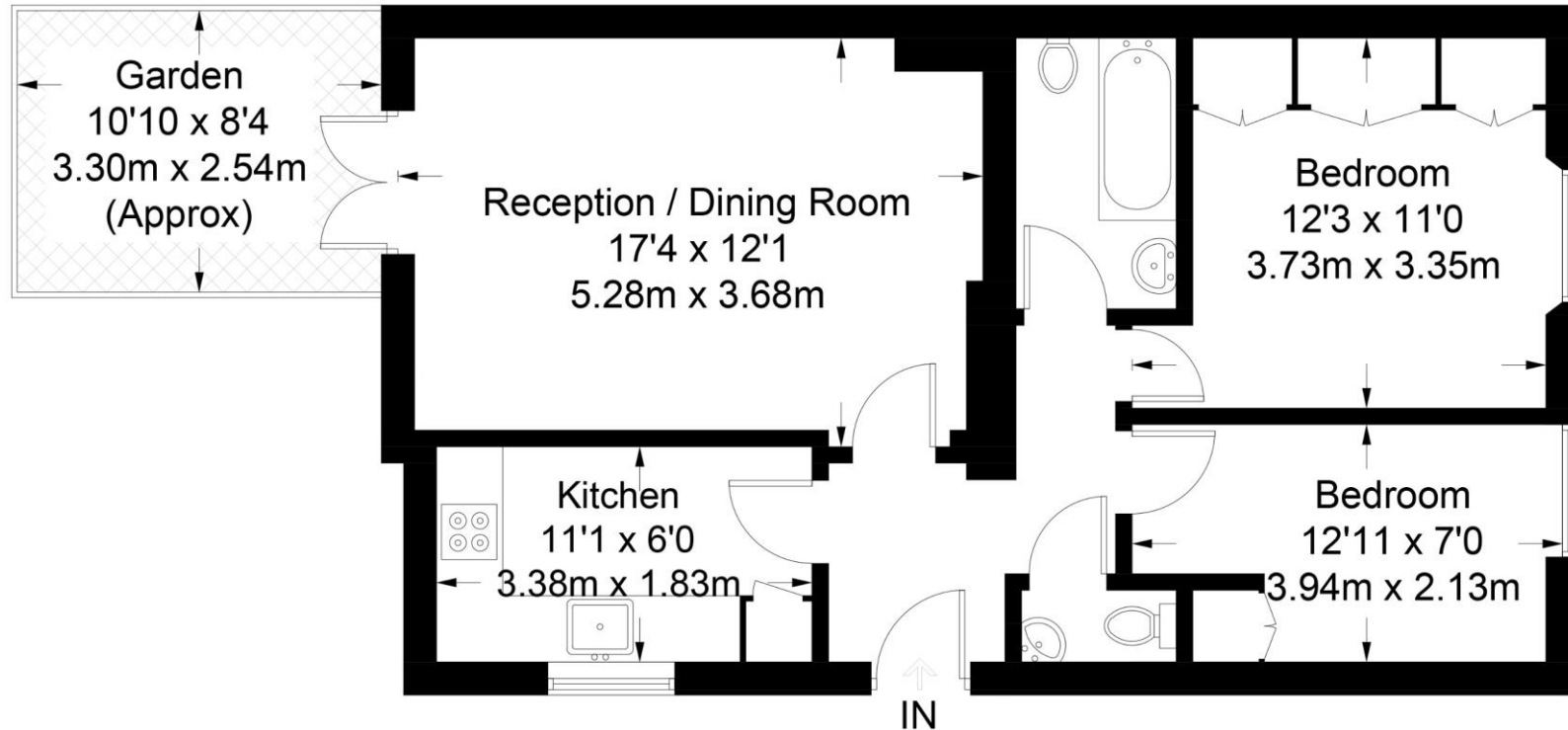
[westminsterlettingsusers@chestertons.co.uk](mailto:westminsterlettingsusers@chestertons.co.uk)

02030408220

[chestertons.co.uk](https://chestertons.co.uk)

## Belgrave Road

Approximate Gross Internal Area = 626 sq ft / 58.2 sq m



### Lower Ground Floor

Not to scale, for guidance only and must not be relied upon as a statement of fact.  
All measurements and areas are approximate only and have been prepared in accordance with the current edition of the RICS Code of Measuring Practice.

