



Belgrave Road

Pimlico, SW1V

£3,250 per month
(£750 per week)

The property features two double bedrooms, two bathroom, large living area, separate kitchen, with added benefits including a lift and private south west facing terrace.



Belgrave Road

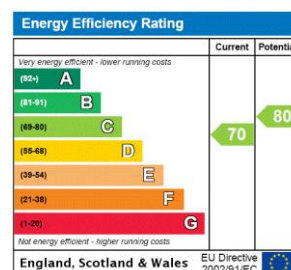
Pimlico, SW1V

- Two Double Bedrooms
- Fourth Floor (with lift)
- South West Facing Terrace



Situated on the third floor (with lift) of this well maintained building in the heart of Pimlico, is this bright and airy two bedroom flat. Flooded with natural light, this property offers two double bedrooms (master with en-suite shower), family bathroom, a bright reception room with separate kitchen and a south west facing terrace. Within easy reach of both Victoria and Pimlico underground stations.

Minimum Term: months
Deposit Required: £0.00
Local Authority:
Council Tax Band:
EPC Rating: C



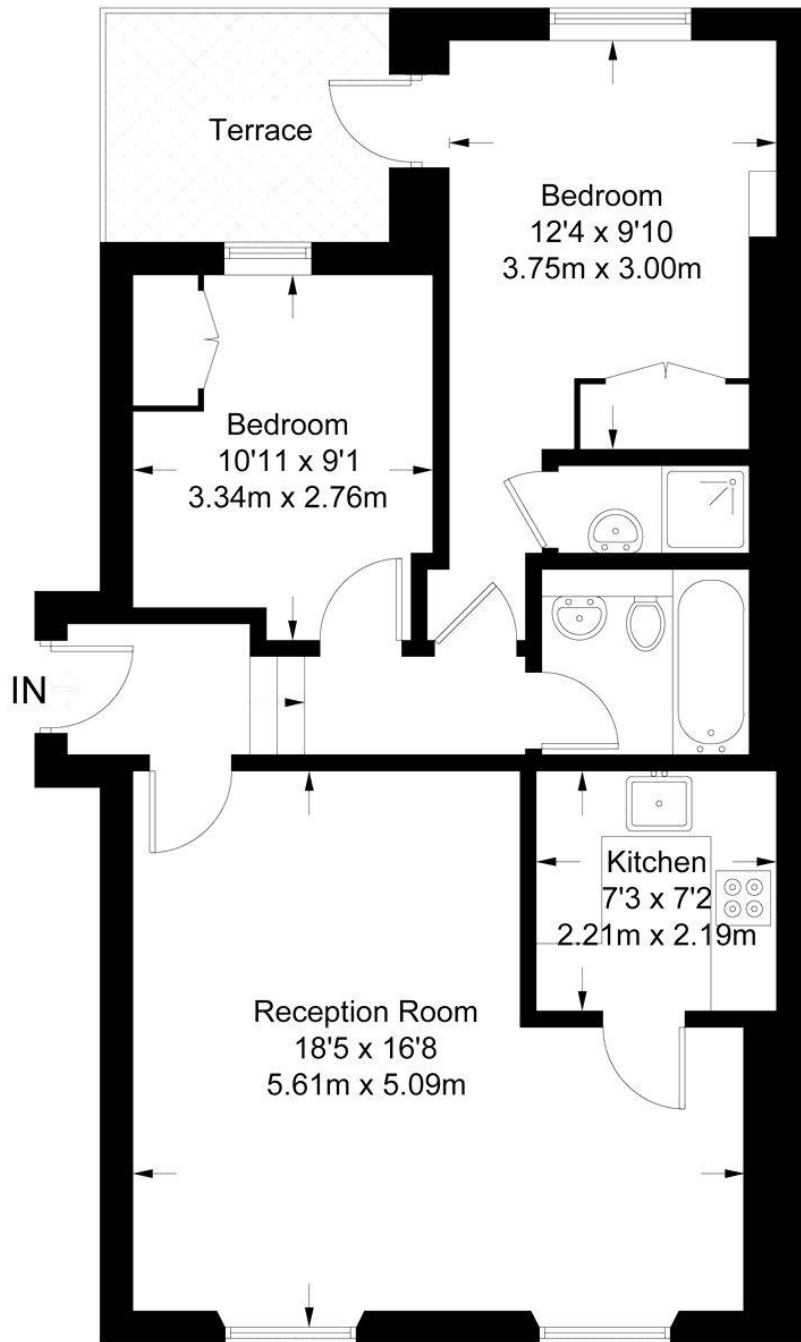
Chestertons Westminster & Pimlico Lettings

105 Wilton Road
 London
 SW1V 1DZ
 lettings.westminster@chestertons.com
 02030408220
 chestertons.com

Additional tenant charges apply (fees apply to non-AST tenancies only)
 Tenancy Agreement Fee: £300
 References per Tenant/Guarantor: £60
 Inventory check (approx. £100 – £250 inc. VAT)
[chestertons.com/property-to-rent/applicable-fees](https://www.chestertons.com/property-to-rent/applicable-fees)

Belgrave Road

Approximate Gross Internal Area = 679 sq ft / 63.1 sq m



Third Floor

Not to scale, for guidance only and must not be relied upon as a statement of fact.
All measurements and areas are approximate only and have been prepared in accordance with the current edition of the RICS Code of Measuring Practice.

