



Royal Belgrave House
Hugh Street, SW1V





A well-presented one bedroom apartment, featuring wood flooring, a separate fitted kitchen, and a modern bathroom. The double bedroom provides ample storage. Situated within a well-maintained portered building with access to a communal roof terrace.

- 1 Bedroom
- Porter
- Communal Roof Terrace

£2,600 pcm

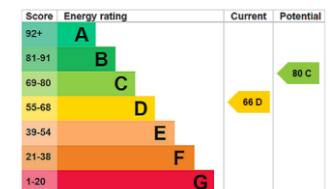
Additional tenant charges apply (fees apply to non-AST tenancies only)

Tenancy Agreement Fee: £300

References per Tenant/Guarantor: £60

Inventory check (approx. £100 – £250 inc. VAT)

[chestertons.co.uk/property-to-rent/applicable-fees](https://www.chestertons.co.uk/property-to-rent/applicable-fees)



Minimum Term: 12 months
Deposit Required: 5 weeks
Local Authority: Westminster
Council Tax Band: F
EPC Rating: D
Furnished

Chestertons Westminster & Pimlico Lettings

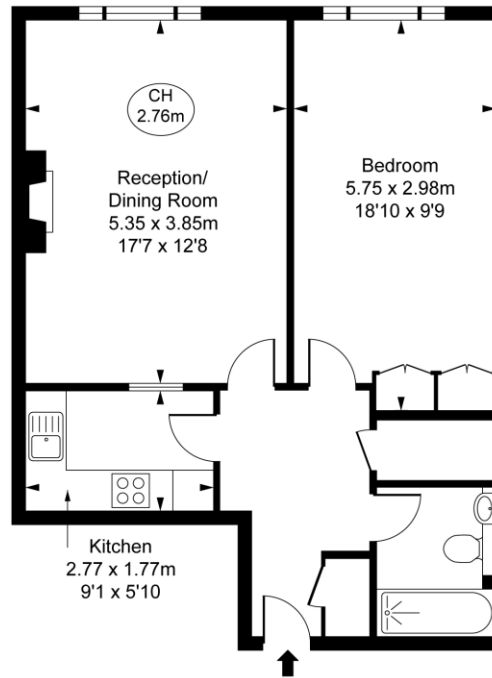
105 Wilton Road
 London
 SW1V 1DZ

westminster@chestertons.co.uk

02030408220

[chestertons.co.uk](https://www.chestertons.co.uk)

Royal Belgrave House,
Hugh Street, SW1V
Approximate Gross Internal Area
56.76 sq m / 611 sq ft
(CH = Ceiling Heights)



Third Floor

This plan is not to scale. It is for guidance and not for valuation purposes.
All measurements and areas are approximate only, and have been prepared in accordance with the current edition of the RICS Code of Measuring Practice.
© Fulham Performance

Chesterton UK Services Limited trading as Chestertons for themselves and for the vendor of this property whose agents they are, give notice that (i) these particulars do not constitute any part of an offer or contract, (ii) all statements contained within these particulars are made without responsibility on the part of Chestertons or the vendor, (iii) whilst made in good faith, none of the statements contained within these particulars are to be relied upon as a statement or representation of fact, (iv) any intending purchasers must satisfy themselves by inspection or otherwise as to the correctness of each of the statements contained within these particulars, (v) the vendor does not make or give either Chestertons or any person in their employment any authority to make or give representation or warranty whatsoever in relation to this property. Wide angle lenses may be used. ©Copyright Chestertons | Chesterton Global Ltd | Registered Office 40 Connaught Street, Hyde Park, London W2 2AB Registered Company Number 05334580.



This paper is
100% recyclable