



Gillingham Street

Pimlico, SW1V

£5,633.33 per month
(£1,300 per week)

Finished to a high specification throughout is this modern terraced house close by to Victoria Station & the delights of St James's & Pimlico. Divided across 4 floors this home offers space & convenience

CHESTERTONS



Gillingham Street

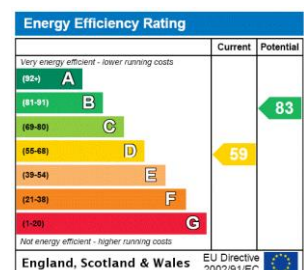
Pimlico, SW1V

•



Finished to a high specification throughout is this modern terraced house close by to Victoria Station & the delights of St James's & Pimlico. Divided across 4 floors this home offers space & convenience. Available now.

Minimum Term: 6 months
Deposit Required: £0.00
Local Authority: Westminster City Council
Council Tax Band: H
EPC Rating: D
Furnished



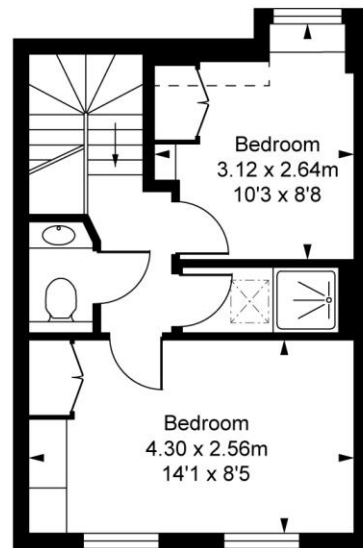
Chestertons Westminster & Pimlico Lettings

105 Wilton Road
 London
 SW1V 1DZ
lettings.westminster@chestertons.com
 02030408220
chestertons.com

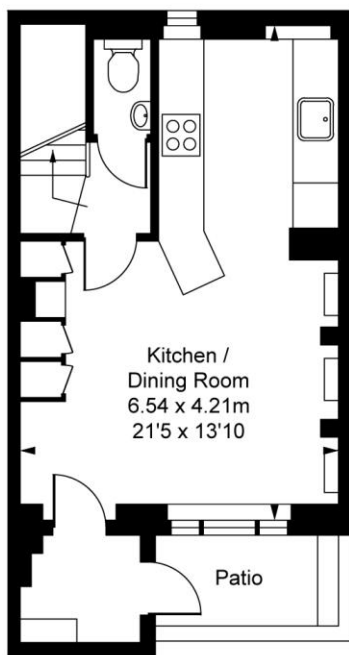
Additional tenant charges apply (fees apply to non-AST tenancies only)
 Tenancy Agreement Fee: £300
 References per Tenant/Guarantor: £60
 Inventory check (approx. £100 – £250 inc. VAT)
chestertons.com/property-to-rent/applicable-fees

Gillingham Street, SW1V
Approximate Gross Internal Area
112.09 sq m / 1,207 sq ft

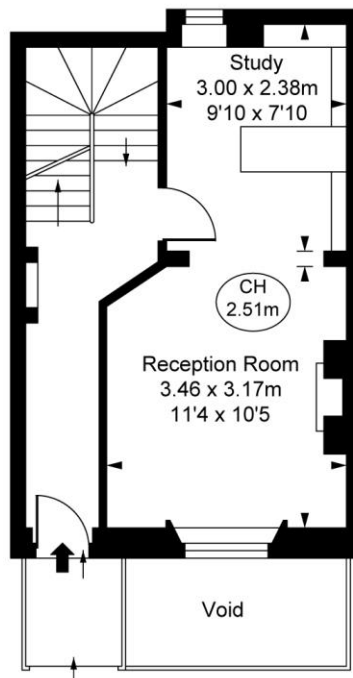
(Including restricted height
under 1.5m [] [] [] [])
(CH = Ceiling Heights)



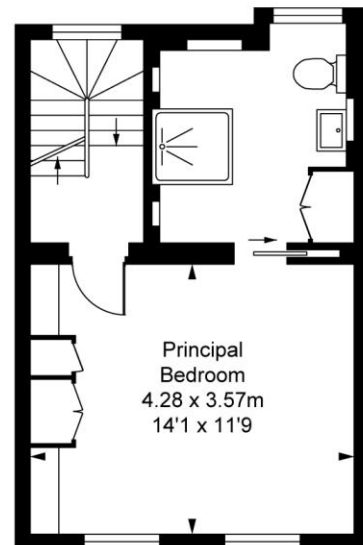
Second Floor
Approximate Gross Internal Area
27.26 sq m / 293 sq ft



Lower Ground Floor
Approximate Gross Internal Area
29.13 sq m / 314 sq ft



Ground Floor
Approximate Gross Internal Area
27.46 sq m / 296 sq ft



First Floor
Approximate Gross Internal Area
28.24 sq m / 304 sq ft

This plan is not to scale. It is for guidance and not for valuation purposes.
All measurements and areas are approximate only, and have been prepared in accordance with the current edition of the RICS Code of Measuring Practice.
© Fulham Performance