



Tounson Court

Montaigne Close, SW1P

£6,000 per month
(£1,384.62 per week)

SHORT LET With a spacious kitchen and living space, a master bedroom with en-suite shower room, a second bedroom, third smaller room and a balcony with Gym, Jacuzzi and secure parking space.



Tounson Court

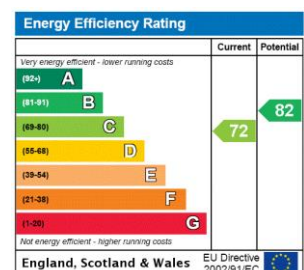
Montaigne Close, SW1P

- Short Let
- Gated development
- 3 Bedrooms, 2 Bathrooms, 1 Reception
- Gym, Sauna and Jacuzzi
- 24 hour concierge
- Secure private parking space
- Bills included



A bright and spacious first floor apartment in private gated development with concierge in the heart of Westminster. The apartment comprises from a generous sized kitchen /living space leading to a private balcony, a master bedroom with en-suite shower room, a second bedroom with great amount of storage, third smaller room/study room and wooden floors throughout. The residents also benefit from gym, sauna and Jacuzzi, a 24 hour concierge service and a secure private parking space. The property is located within short walking distance to Victoria, Westminster and St James's Park underground stations.

Minimum Term: 1 months
Deposit Required: £5,538.46
Local Authority: Westminster
Council Tax Band: G
EPC Rating: B
Furnished

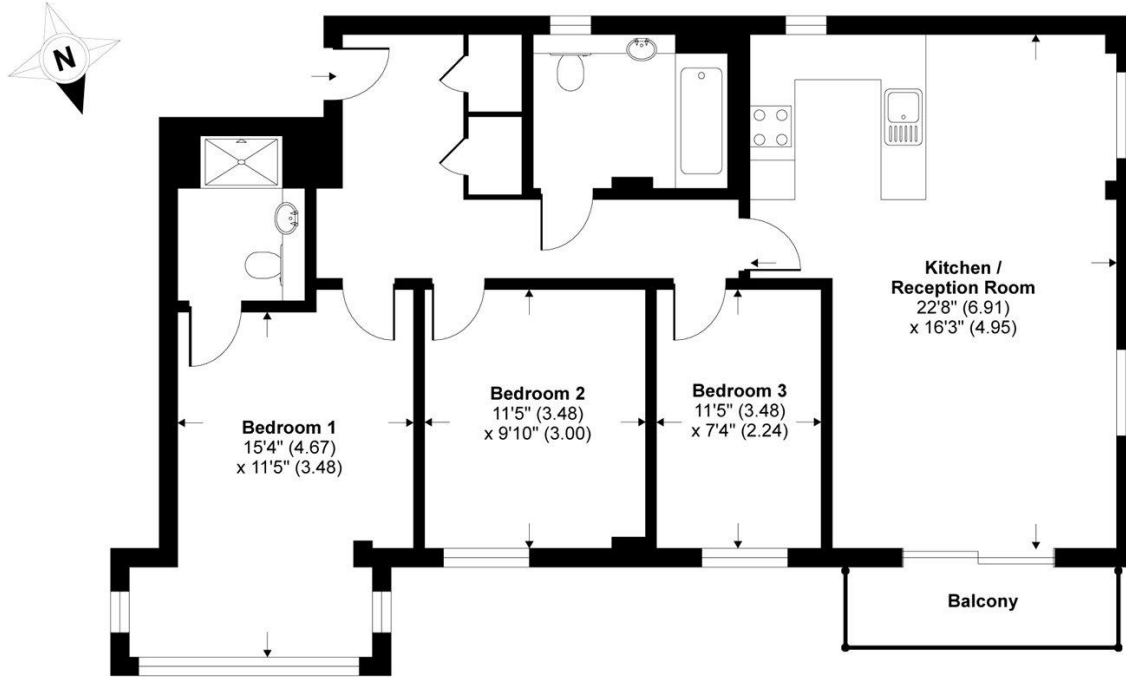


Chestertons Westminster & Pimlico Lettings

105 Wilton Road
 London
 SW1V 1DZ
 westminster@chestertons.co.uk
 02030408220
 chestertons.co.uk

Additional tenant charges apply (fees apply to non-AST tenancies only)
 Tenancy Agreement Fee: £300
 References per Tenant/Guarantor: £60
 Inventory check (approx. £100 – £250 inc. VAT)
 chestertons.co.uk/property-to-rent/applicable-fees

Tounson Court, Montaigne Close, London, SW1P



FIRST FLOOR

TOTAL GROSS INTERNAL FLOOR AREA 982 SQ FT 91.2 SQ METRES

Whilst every attempt has been made to ensure the accuracy of the floor plan contained here, measurements of doors, windows and rooms are approximate and no responsibility is taken for any error, omission or misstatement. These plans are for representation purposes only as defined by RICS Code of Measuring Practice and should be used as such by any prospective purchaser. Specifically no guarantee is given on the total square footage of the property if quoted on this plan. Any figure given is for initial guidance only and should not be relied on as a basis of valuation.

Copyright nichecom.co.uk 2015 Produced for Chesterton Humberts REF : 33609