



Rochester Row
Westminster, SW1P

CHESTERTONS





One of the finest two bedroom, two bathroom, purpose-built flats to come to the market recently in Westminster. All the rooms are incredibly generously proportioned, stylishly finished and in immaculate condition. Water rates are included in the rent

- Fantastic Condition Throughout
- 2 Bedrooms, 2 Bathrooms, 1 Reception
- Daytime Porter
- Water rates are included in the rent

£4,000 pcm

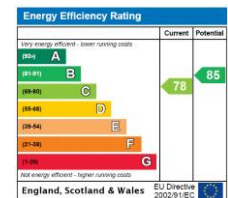
Additional tenant charges apply (fees apply to non-AST tenancies only)

Tenancy Agreement Fee: £300

References per Tenant/Guarantor: £60

Inventory check (approx. £100 – £250 inc. VAT)

chestertons.co.uk/property-to-rent/applicable-fees



Minimum Term: 12 months
Deposit Required: 5 weeks
Local Authority: Westminster
Council Tax Band: G
EPC Rating: C
Furnished

Chestertons Westminster & Pimlico Lettings

105 Wilton Road
 London
 SW1V 1DZ

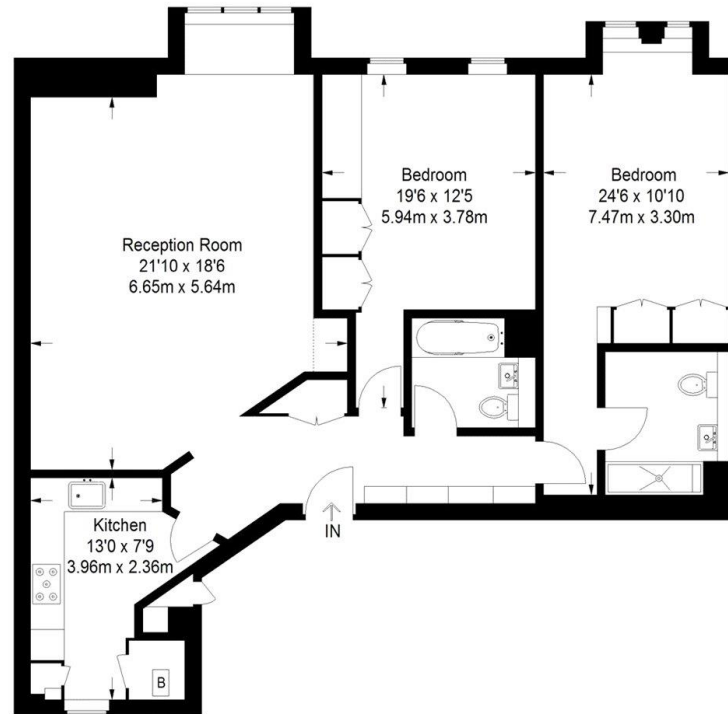
westminster@chestertons.co.uk

02030408220

chestertons.co.uk

Rochester Row

Approximate Gross Internal Area
1128 sq ft / 104.8 sq m
External Cupboard = 7 sq ft / 0.7 sq m
1135 sq ft / 105.5 sq m



Second Floor

Not to scale, for guidance only and must not be relied upon as a statement of fact.
All measurements and areas are approximate only and have been prepared in
accordance with the current edition of the RICS Code of Measuring Practice.

Chesterton Global Ltd trading as Chestertons for themselves and for the vendor of this property whose agents they are, give notice that (i) these particulars do not constitute any part of an offer or contract, (ii) all statements contained within these particulars are made without responsibility on the part of Chestertons or the vendor, (iii) whilst made in good faith, none of the statements contained within these particulars are to be relied upon as a statement or representation of fact, (iv) any intending purchasers must satisfy themselves by inspection or otherwise as to the correctness of each of the statements contained within these particulars, (v) the vendor does not make or give either Chestertons or any person in their employment any authority to make or give representation or warranty whatsoever in relation to this property. Wide angle lenses may be used. ©Copyright Chestertons | Chesterton Global Ltd | Registered Office 40 Connaught Street, Hyde Park, London W2 2AB Registered Company Number 05334580.



This paper is
100% recyclable