



Consort Rise House

Buckingham Palace Road, SW1W

£6,000 per month
(£1,384.62 per week)

A bright and spacious apartment on the 9th floor of this building which is placed conveniently close to Sloane Square, Victoria and Pimlico.

Consort Rise is a hugely popular building which offers a 24h concierge, gym, sauna and secure under parking.



Consort Rise House

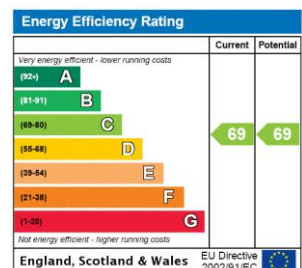
Buckingham Palace Road, SW1W

- Newly Refurbished apartment
- 3 bedrooms, 2 bathrooms, 1 reception
- Secure Underground Parking
- 24 Hour Concierge & Outside Space



An immaculately presented top floor apartment benefitting from a South and South Westerly aspect, fabulous views of the London skyline and air conditioning. The accommodation has been refurbished to a very high standard with great attention to detail and comprises a large open plan reception, dining room and kitchen, three double bedrooms (master with en-suite) and further bathroom. The apartment has ample storage and has the added bonus of a large balcony. Further benefits include a 24 hour concierge and secure underground parking.

Minimum Term: 6 months
Deposit Required: £8,307.69
Local Authority: City of Westminster
Council Tax Band: H
EPC Rating: C
Unfurnished



Chestertons Westminster & Pimlico Lettings

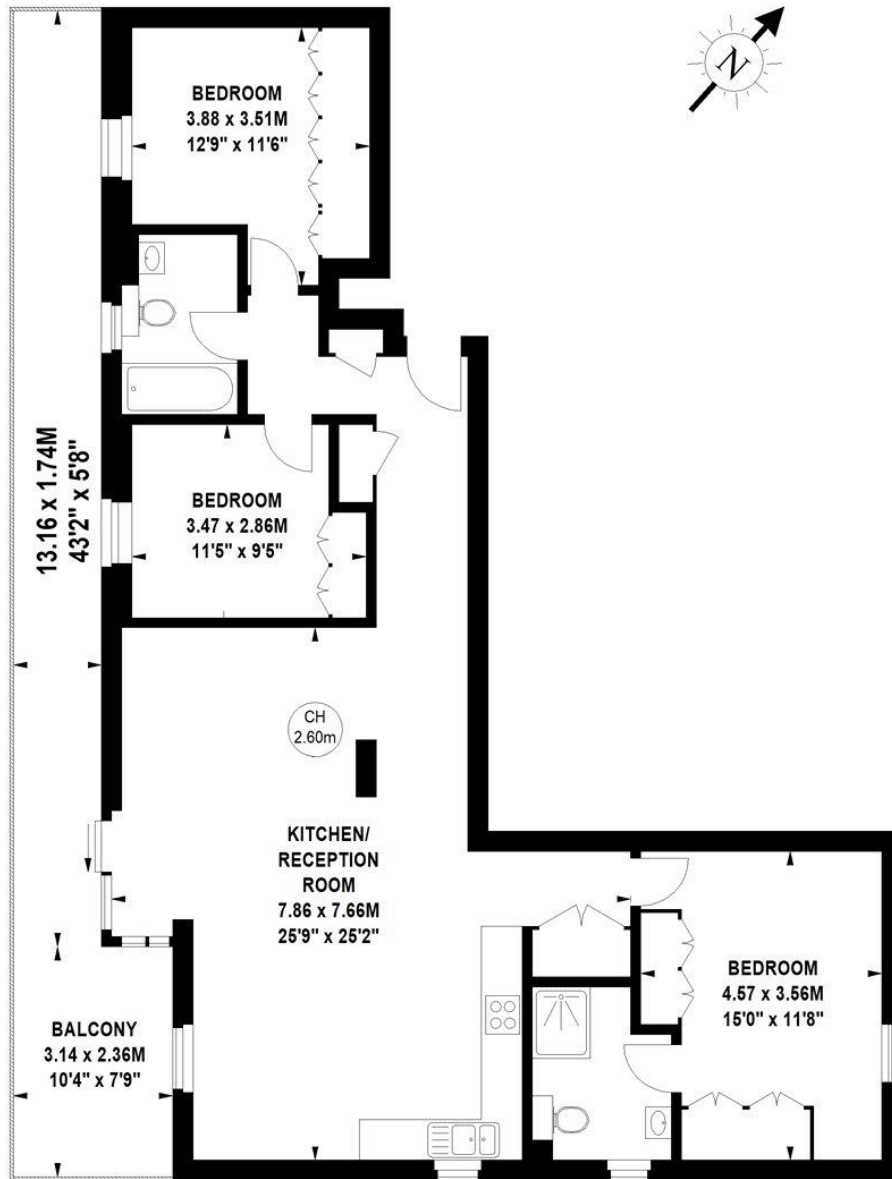
105 Wilton Road
 London
 SW1V 1DZ
 westminster@chestertons.co.uk
 02030408220
 chestertons.co.uk

Additional tenant charges apply (fees apply to non-AST tenancies only)
 Tenancy Agreement Fee: £300
 References per Tenant/Guarantor: £60
 Inventory check (approx. £100 – £250 inc. VAT)
 chestertons.co.uk/property-to-rent/applicable-fees

Consort Rise House, SW1V

Key :
CH - Ceiling Height

Approximate gross internal area
101.08 sq m / 1088 sq ft



Ninth Floor

The floor plan is not to scale and measurements and areas shown are approximate and therefore should be used for illustrative purposes only. The plan has been prepared in accordance with the RICS code of Measuring Practice and whilst we have confidence in the information produced, it must not be relied on.

If there is any aspect of particular importance, you should carry out or commission your own inspection of the property.

Copyright of FeaturePRO.

