



Rochester Row

London, SW1P

£14,900 per month
(£3,438.46 per week)

Spectacular penthouse apartment benefiting from air conditioning and underfloor heating, roof terrace with hot tub, steam shower, sound system, porter, lift and two parking spaces.



Rochester Row

London, SW1P

- Lovely penthouse apartment in Westminster
- Secure Gated Parking for Two Cars
- Landscaped terrace with Hot Tub
- Shower with steam room
- Air Conditioning
- Home Automation
- Underfloor heating



A beautiful light modern home in the heart of Westminster. With four double bedrooms and three bathrooms, plus WC, this duplex home offers the occupier bright modern living in well-proportioned furnished rooms. The open plan reception and kitchen area benefits from floor to ceiling windows looking out onto the landscaped decked area with a hot tub, space for sun loungers and dining area all looking at views of some of London's most iconic sights.

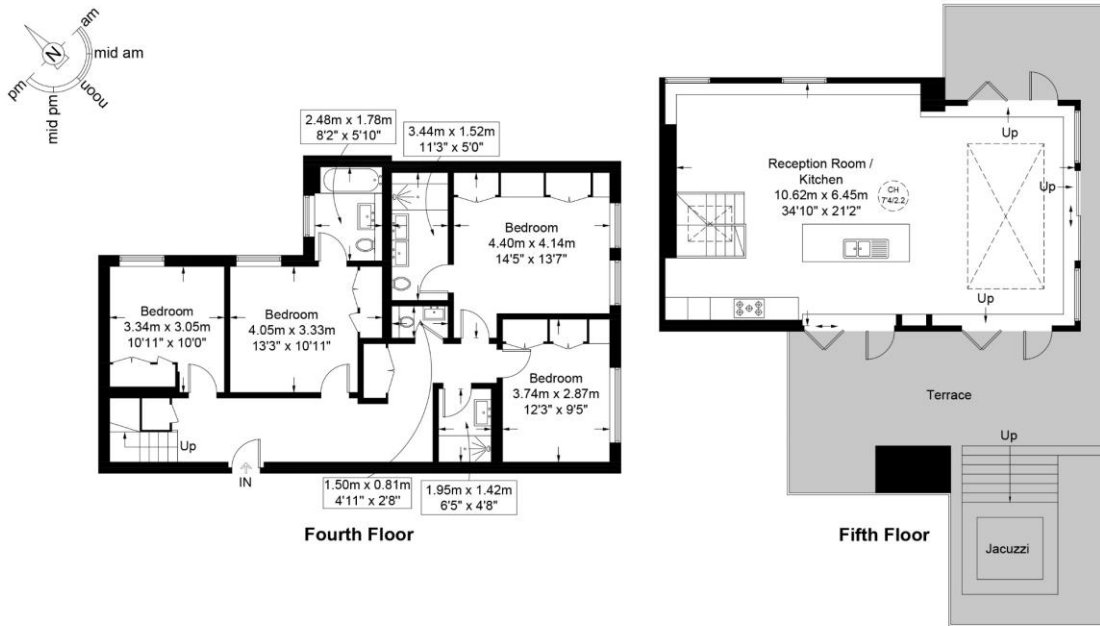
With a high specification the property offers integrated home automation, air conditioning, steam shower, sound system and a fantastic lighting arrangement to set the scene for any mood.

Minimum Term: 12 months
Deposit Required: £0.00
Local Authority:
Council Tax Band:
EPC Rating: To be confirmed
Furnished, Part Furnished

Chestertons Westminster & Pimlico Lettings

105 Wilton Road
London
SW1V 1DZ
westminster@chestertons.co.uk
02030408220
chestertons.co.uk

Additional tenant charges apply (fees apply to non-AST tenancies only)
Tenancy Agreement Fee: £300
References per Tenant/Guarantor: £60
Inventory check (approx. £100 – £250 inc. VAT)
chestertons.co.uk/property-to-rent/applicable-fees



This plan is for layout guidance only and is not drawn to scale unless stated. All dimensions, including windows, doors, and the Total Gross Internal Area (GIA), are approximate. For precise measurements, please consult a qualified architect or surveyor before making any decisions based on this plan.

