



# Millennium House

132 Grosvenor Road, SW1V

£5,000 per month  
(£1,153.85 per week)

Beautifully refurbished penthouse apartment boasting river views and comprises two large double bedrooms with en-suite bathrooms, modern kitchen, large reception leading onto a beautiful atrium with doors onto a wraparound decked terrace and parking.





# Millennium House

132 Grosvenor Road, SW1V

- Stunning Penthouse
- Direct River Views
- Wrap Around Decked Terrace
- Underground Parking
- Fantastic Location
- Great Transport Links

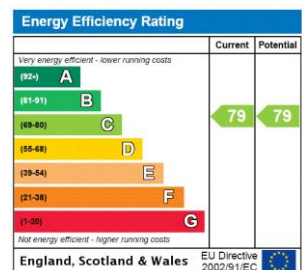




Beautifully refurbished penthouse apartment boasting river views, underground parking and concierge service. The property comprises two large double bedrooms with en-suite bathrooms, modern kitchen, large reception leading onto a beautiful atrium with doors onto a wraparound decked terrace. Millennium House benefits from 24 hours concierge service and is located within walking distance to Pimlico and Sloane Square Underground stations, Battersea Park and Dolphin Square

Our China Desk is here for you, if Chinese is your preferred language, please get in touch via WeChat (ChestertonsChinaDesk)

**Minimum Term:** 12 months  
**Deposit Required:** £6,923.08  
**Local Authority:** City Of Westminster  
**Council Tax Band:** H  
**EPC Rating:** C  
**Furnished**



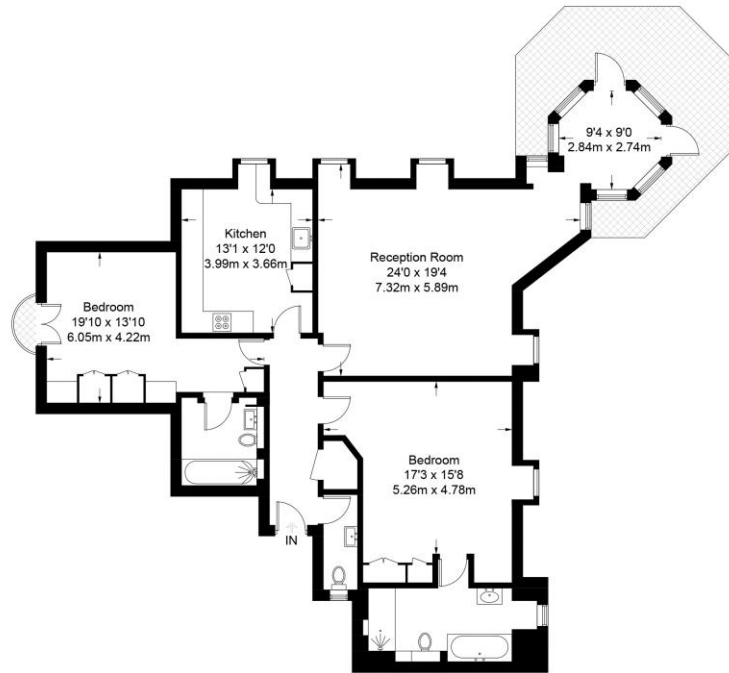
### Chestertons Westminster & Pimlico Lettings

105 Wilton Road  
 London  
 SW1V 1DZ  
 westminster@chestertons.co.uk  
 02030408220  
 chestertons.co.uk

Additional tenant charges apply (fees apply to non-AST tenancies only)  
 Tenancy Agreement Fee: £300  
 References per Tenant/Guarantor: £60  
 Inventory check (approx. £100 – £250 inc. VAT)  
 chestertons.co.uk/property-to-rent/applicable-fees

# Millennium House

Approximate Gross Internal Area = 1429 sq ft / 132.8 sq m



Fourth Floor

Not to scale, for guidance only and must not be relied upon as a statement of fact.  
All measurements and areas are approximate only and have been prepared in accordance with the current edition of the RICS Code of Measuring Practice.

