



Altayyar House
102 Marsham Street, SW1P

CHESTERTONS





A newly refurbished two-bedroom, two-bathroom apartment in the prestigious area of Westminster. This residence features a bright and expansive reception room with elegant wood flooring, a contemporary open-plan kitchen, a dining area, and a guest WC.

- Two Double Bedroom
- Spacious Open Plan Kitchen
- Modern Throughout
- Good Natural Light
- High Floor

£5,611.67 pcm

Additional tenant charges apply (fees apply to non-AST tenancies only)

Tenancy Agreement Fee: £300

References per Tenant/Guarantor: £60

Inventory check (approx. £100 – £250 inc. VAT)

chestertons.co.uk/property-to-rent/applicable-fees

Energy Efficiency Rating		Current	Potential
92-100	A		
81-91	B	83	83
69-80	C		
55-68	D		
49-54	E		
35-48	F		
1-34	G		

Not energy efficient - higher running costs

England, Scotland & Wales EU Directive 2002/91/EC

Minimum Term: 12 months
Deposit Required: 6 weeks
Local Authority: Westminster
Council Tax Band: G
EPC Rating: B
Furnished

Chestertons Westminster & Pimlico Lettings

105 Wilton Road

London

SW1V 1DZ

westminster@chestertons.co.uk

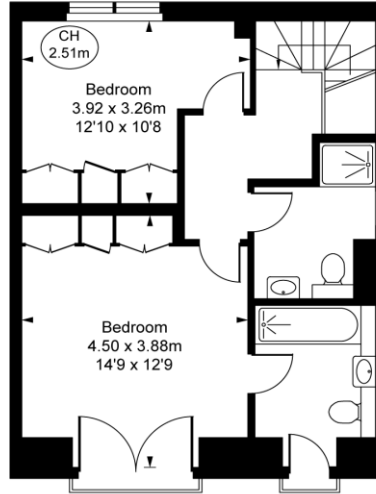
02030408220

chestertons.co.uk

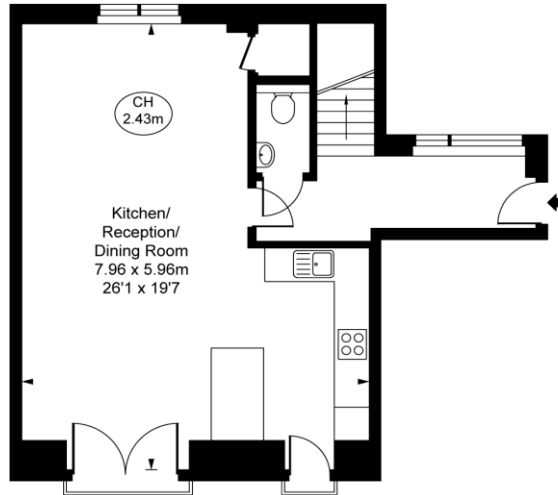
Altayyar House,
 Marsham Street, SW1P
 Approximate Gross Internal Area
 96.52 sq m / 1,039 sq ft
 (CH = Ceiling Heights)



Eighth Floor
 Approximate Gross Internal Area
 46.79 sq m / 504 sq ft



Seventh Floor
 Approximate Gross Internal Area
 49.73 sq m / 535 sq ft



This plan is not to scale. It is for guidance and not for valuation purposes.
 All measurements and areas are approximate only, and have been prepared in accordance with the current edition of the RICS Code of Measuring Practice.
 © Fulham Performance

Chesterton Global Ltd trading as Chestertons for themselves and for the vendor of this property whose agents they are, give notice that (i) these particulars do not constitute any part of an offer or contract, (ii) all statements contained within these particulars are made without responsibility on the part of Chestertons or the vendor, (iii) whilst made in good faith, none of the statements contained within these particulars are to be relied upon as a statement or representation of fact, (iv) any intending purchasers must satisfy themselves by inspection or otherwise as to the correctness of each of the statements contained within these particulars, (v) the vendor does not make or give either Chestertons or any person in their employment any authority to make or give representation or warranty whatsoever in relation to this property. Wide angle lenses may be used. ©Copyright Chestertons | Chesterton Global Ltd | Registered Office 40 Connaught Street, Hyde Park, London W2 2AB Registered Company Number 05334580.



This paper is
 100% recyclable