



# Eccleston Square

Pimlico, SW1V

£900 per week  
(£3,900 pcm)

A fantastic top floor apartment with decked terrace with views. This apartment has been renovated throughout and benefits from tiled bathroom with a spa shower with a Jacuzzi bath, kitchen, bedroom and a bright reception with wooden flooring.



# Eccleston Square

Pimlico, SW1V

- Penthouse one bedroom pad
- Stunning position overlooking Eccleston Square
- Wooden floors throughout
-



A fantastic top floor apartment with a private decked terrace with views over an award winning garden square. This apartment has been renovated throughout and benefits from tiled bathroom with a power shower and a Jacuzzi, kitchen, bedroom and a bright reception with wood floors. Further benefits include access to the garden square, tennis courts and a storage unit for a push bike.

---

**Tenure:** To be advised

**Furnished**

Additional tenant charges apply (fees apply to non-AST tenancies only)

Tenancy Agreement Fee: £300

References per Tenant/Guarantor: £60

Inventory check (approx. £100 – £250 inc. VAT)

[chestertons.com/property-to-rent/applicable-fees](https://www.chestertons.com/property-to-rent/applicable-fees)

---

### *Chestertons Westminster & Pimlico Lettings*

105 Wilton Road

London

SW1V 1DZ

[lettings.westminster@chestertons.com](mailto:lettings.westminster@chestertons.com)

02030408220

[chestertons.com](https://www.chestertons.com)

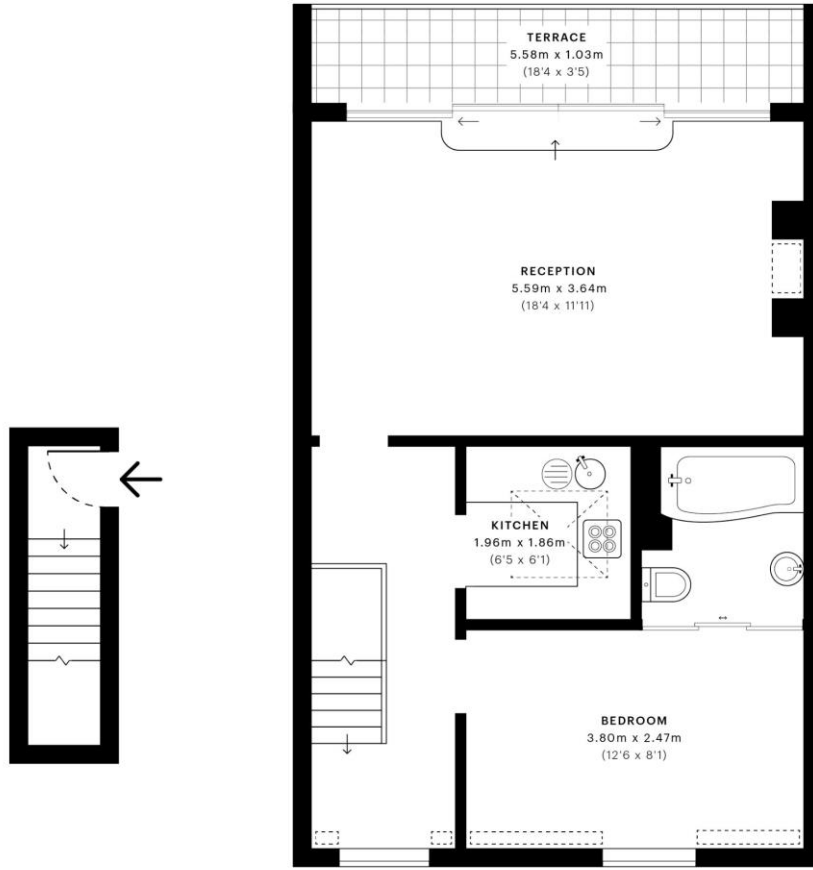


# Eccleston Square, SW1V

CAPTURE DATE 10/02/2022 LASER SCAN POINTS 2,122,249

GROSS INTERNAL AREA

48.95 sqm / 526.89 sqft



— Third Floor

— Fourth Floor

 **GROSS INTERNAL AREA (GIA)**  
The footprint of the property  
48.95 sqm / 526.89 sqft

 **NET INTERNAL AREA (NIA)**  
Excludes walls and external features  
Includes washrooms, restricted head height  
44.55 sqm / 479.53 sqft

 **EXTERNAL STRUCTURAL FEATURES**  
Balconies, terraces, verandas etc.  
5.71 sqm / 61.46 sqft

 **RESTRICTED HEAD HEIGHT**  
Limited use area under 1.5 m  
0.82 sqm / 8.83 sqft



Spec Verified floor plans are produced in accordance with Royal Institution of Chartered Surveyors' Property Measurement Standards. Plots and gardens are illustrative only and excluded from all area calculations. Due to rounding, numbers may not add up precisely. All measurements shown for the individual room lengths and widths are the maximum points of measurements captured in the scan.

IPMS 3B RESIDENTIAL 52.54 sqm / 565.54 sqft  
IPMS 3C RESIDENTIAL 50.34 sqm / 541.86 sqft

SPIC ID 62012b88b8ac0c0db3ff41b9

