



Carlisle Place

London, SW1P

£9,000 per month
(£2,076.92 per week)

Beautiful four bedrooms mansion lateral apartment that enjoys extensive entertaining space with high ceilings throughout and original period features. With lift, porter and private terrace and balcony. Water & Hot water included in rent.



Carlisle Place

London, SW1P

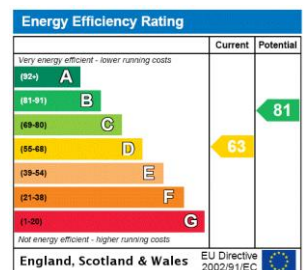
- Big floor to ceiling windows and balcony
- 4 Bedrooms, 2 Receptions, 3 Bathrooms
- Lift, Porter and Balcony
- Water&Hot water included in the rent
- part furnished



Virtual Viewing Available

Beautiful lateral apartment with high ceilings, big floor to ceiling windows and grand entertaining spaces and entrance hallway, beautiful terrace and balcony. There are three reception rooms consisting of a formal drawing room, a separate dining room and a more relaxed family room which connects to a modern eat in Kitchen, a master bedroom with en-suite bathroom, 3 additional bedrooms with two further bathroom and a further guest W.C.. Finished to a high standard throughout with original parquet flooring, porter and lift. Water&Hot water included in the rent. Evelyn Mansions is a popular mansion block situated on Carlisle Place just off Victoria Street. Victoria station (Gatwick Express,

Minimum Term: 12 months
Deposit Required: £10,384.62
Local Authority: City Of Westminster
Council Tax Band: H
EPC Rating: D
Part Furnished, Unfurnished



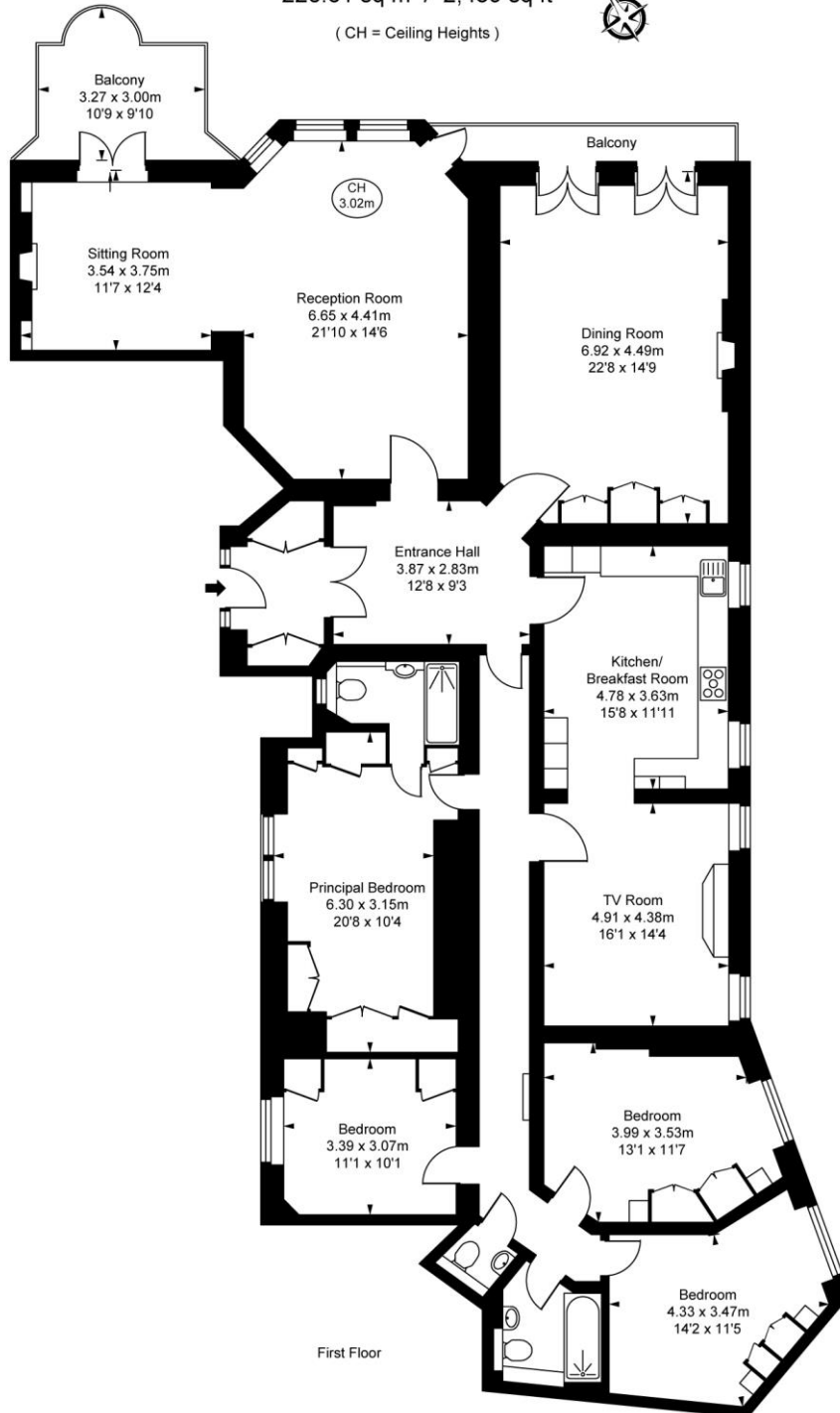
Chestertons Westminster & Pimlico Lettings

105 Wilton Road
 London
 SW1V 1DZ
 westminster@chestertons.co.uk
 02030408220
 chestertons.co.uk

Additional tenant charges apply (fees apply to non-AST tenancies only)
 Tenancy Agreement Fee: £300
 References per Tenant/Guarantor: £60
 Inventory check (approx. £100 – £250 inc. VAT)
 chestertons.co.uk/property-to-rent/applicable-fees

Evelyn Mansions,
 Carlisle Place, SW1P
 Approximate Gross Internal Area
 226.61 sq m / 2,439 sq ft

(CH = Ceiling Heights)



First Floor

This plan is not to scale. It is for guidance and not for valuation purposes.
 All measurements and areas are approximate only, and have been prepared in accordance with the current edition of the RICS Code of Measuring Practice.
 © Fulham Performance

Chesterton Global Ltd trading as Chestertons for themselves and for the vendor of this property whose agents they are, give notice that (i) these particulars do not constitute any part of an offer or contract, (ii) all statements contained within these particulars are made without responsibility on the part of Chestertons or the vendor, (iii) whilst made in good faith, none of the statements contained within these particulars are to be relied upon as a statement or representation of fact, (iv) any intending purchasers must satisfy themselves by inspection or otherwise as to the correctness of each of the statements contained within these particulars, (v) the vendor does not make or give either Chestertons or any person in their employment any authority to make or give representation or warranty whatsoever in relation to this property. Wide angle lenses may be used. ©Copyright Chestertons | Chesterton Global Ltd | Registered Office 40 Connaught Street, Hyde Park, London W2 2AB Registered Company Number 05334580.



This paper is
 100% recyclable