



Drummond Gate

Pimlico, SW1V

£525 per week
(£2,275 pcm)

Spacious one bedroom flat in a very prestigious garden development situated couple minutes away from Pimlico underground station and the river. It has a brand new bathroom and kitchen. The bedroom boasts excellent storage space.



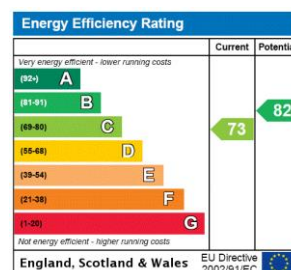
Drummond Gate

Pimlico, SW1V

•

Tenure: To be advised

Additional tenant charges apply (fees apply to non-AST tenancies only)
Tenancy Agreement Fee: £300
References per Tenant/Guarantor: £60
Inventory check (approx. £100 – £250 inc. VAT)
[chestertons.com/property-to-rent/applicable-fees](https://www.chestertons.com/property-to-rent/applicable-fees)



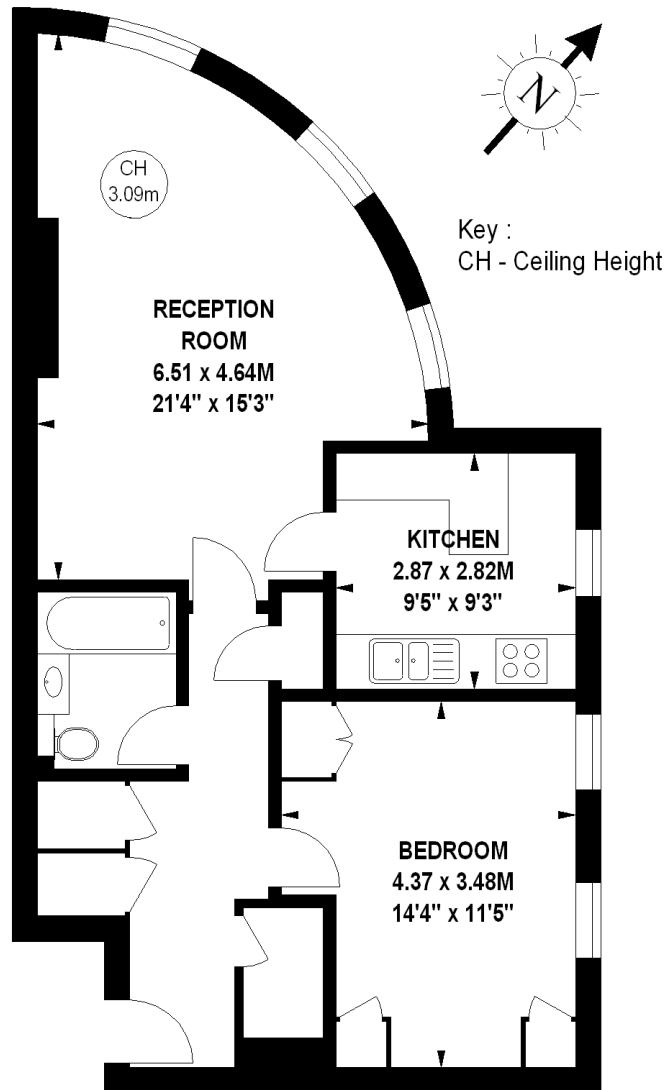
Chestertons Westminster & Pimlico Lettings

105 Wilton Road
London
SW1V 1DZ
lettings.westminster@chestertons.com
02030408220
[chestertons.com](https://www.chestertons.com)

Salisbury House, SW1V

Approximate gross internal area

62.89 sq m / 677 sq ft



Second Floor

The floor plan is not to scale and measurements and areas shown are approximate and therefore should be used for illustrative purposes only.

The plan has been prepared in accordance with the RICS code of Measuring Practice and whilst we have confidence in the information produced, it must not be relied on.

If there is any aspect of particular importance, you should carry out or commission your own inspection of the property.

Copyright of FeaturePRO.

