

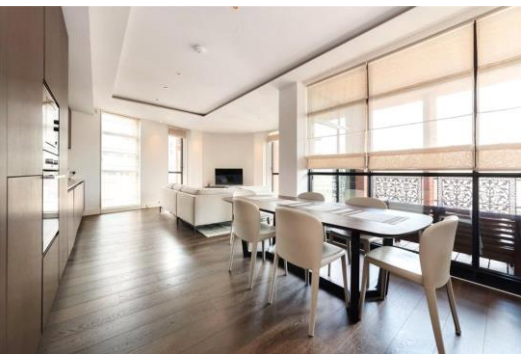


Artillery Row

London, SW1P

£7,583.33 per month
(£1,750 per week)

Beautiful 7th floor apartment within a stylish and highly desirable boutique new development. Beautiful open plan reception, 2 double bedrooms, 2 contemporary bathrooms plus guest WC.



Artillery Row

London, SW1P

•



This is a beautiful 7th floor lateral apartment which is well proportioned, bright and presented in excellent condition throughout. Featuring a stunning double aspect reception with epic skyline views and impressive modern design throughout. The property comprises: 2 double bedrooms (both with good built-in storage), 2 en-suite bathrooms plus guest WC, reception room with dining area, beautiful modern kitchen and a private balcony with wonderful views and concierge.

Minimum Term: 12 months
Deposit Required: £0.00
Local Authority:
Council Tax Band:
EPC Rating: To be confirmed
Furnished

Energy Efficiency Rating		
	Current	Potential
Very energy efficient - lower running costs		
A (91-100)		
B (81-90)	81	81
C (69-80)		
D (55-68)		
E (39-54)		
F (21-38)		
G (1-20)		
Not energy efficient - higher running costs		
England, Scotland & Wales EU Directive 2002/91/EC		

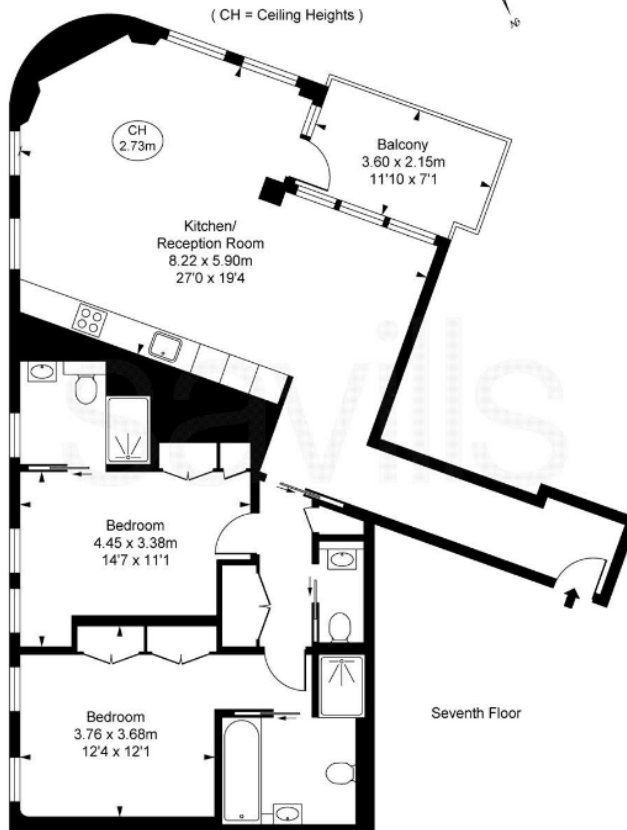
Chestertons Westminster & Pimlico Lettings

105 Wilton Road
 London
 SW1V 1DZ
 westminster@chestertons.co.uk
 02030408220
 chestertons.co.uk

Additional tenant charges apply (fees apply to non-AST tenancies only)
 Tenancy Agreement Fee: £300
 References per Tenant/Guarantor: £60
 Inventory check (approx. £100 – £250 inc. VAT)
 chestertons.co.uk/property-to-rent/applicable-fees

Artillery Row, SW1P
Approximate Gross Internal Area
102.66 sq m / 1,105 sq ft

(CH = Ceiling Heights)



This plan is not to scale. It is for guidance and not for valuation purposes.
All measurements and areas are approximate only, and have been prepared in accordance with the current edition of the RICS Code of Measuring Practice.
© Fulham Performance

