



Parliament View Apartments

1 Albert Embankment, SE1

£6,300 per month
(£1,453.85 per week)

This spacious three bedroom accommodation includes a master bedroom with an en-suite bathroom, two further double bedroom and bathroom. The reception room has wooden flooring with a fully integrated kitchen with aircon . Exclusive to Chestertons.

CHESTERTONS



Parliament View Apartments

1 Albert Embankment, SE1

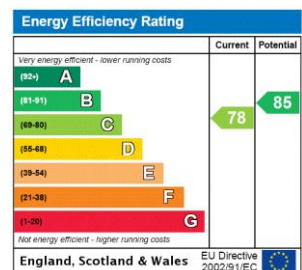
-



This stunning three bedroom with portorage, gym facilities and views across the river towards the Houses of Parliament. The accommodation includes a master bedroom with an en-suite bathroom, two further double bedroom and bathroom. The reception room has wooden flooring with a fully integrated kitchen. Exclusive to Chesterton

Our China Desk is here for you, if Chinese is your preferred language, please get in touch via WeChat (ChestertonsChinaDesk)

Minimum Term: months
Deposit Required: £0.00
Local Authority: City Of Westminster
Council Tax Band: G
EPC Rating: C
Furnished



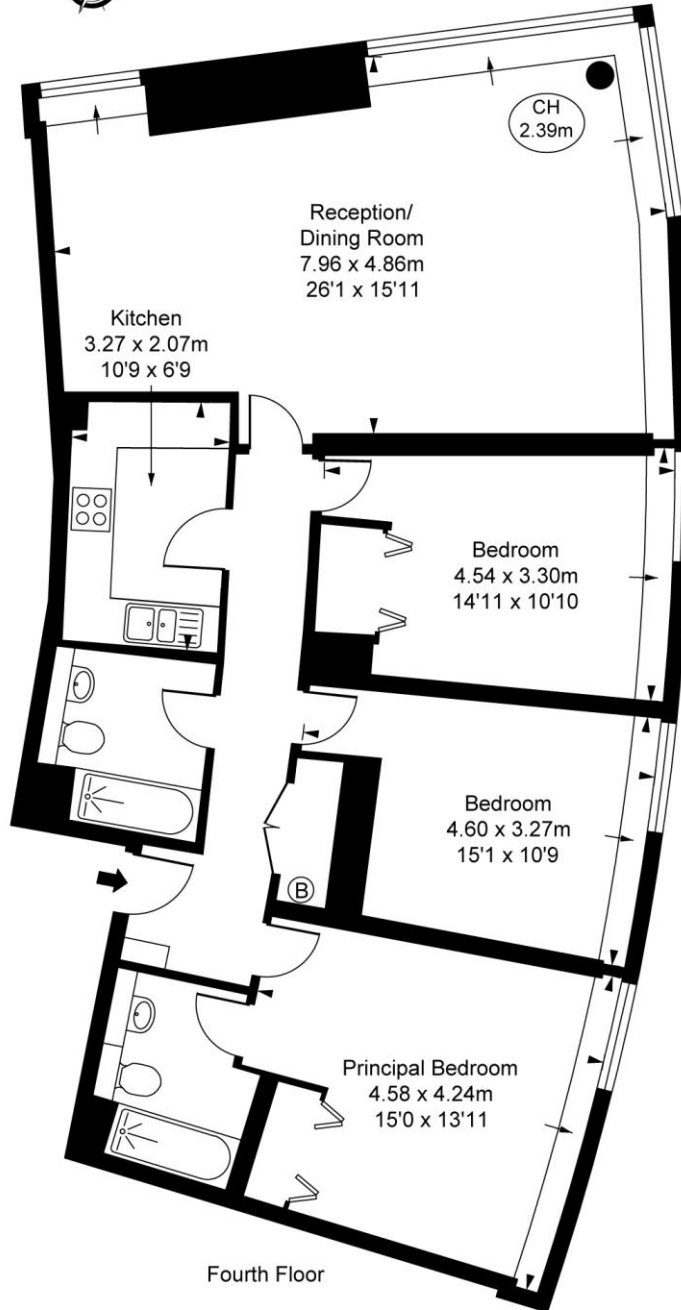
Chestertons Westminster & Pimlico Lettings

105 Wilton Road
 London
 SW1V 1DZ
 westminster@chestertons.co.uk
 02030408220
 chestertons.co.uk

Additional tenant charges apply (fees apply to non-AST tenancies only)
 Tenancy Agreement Fee: £300
 References per Tenant/Guarantor: £60
 Inventory check (approx. £100 – £250 inc. VAT)
 chestertons.co.uk/property-to-rent/applicable-fees

Parliament View Apartments,
Albert Embankment, SE1

Approximate Gross Internal Area
109.91 sq m / 1,183 sq ft
(CH = Ceiling Heights)



This plan is not to scale. It is for guidance and not for valuation purposes.
All measurements and areas are approximate only, and have been prepared in accordance with the current edition of the RICS Code of Measuring Practice.
© Fulham Performance

Chesterton Global Ltd trading as Chestertons for themselves and for the vendor of this property whose agents they are, give notice that (i) these particulars do not constitute any part of an offer or contract, (ii) all statements contained within these particulars are made without responsibility on the part of Chestertons or the vendor, (iii) whilst made in good faith, none of the statements contained within these particulars are to be relied upon as a statement or representation of fact, (iv) any intending purchasers must satisfy themselves by inspection or otherwise as to the correctness of each of the statements contained within these particulars, (v) the vendor does not make or give either Chestertons or any person in their employment any authority to make or give representation or warranty whatsoever in relation to this property. Wide angle lenses may be used. ©Copyright Chestertons | Chesterton Global Ltd | Registered Office 40 Connaught Street, Hyde Park, London W2 2AB Registered Company Number 05334580.



This paper is
100% recyclable