



# Horseferry Road

Westminster 88 Horseferry Road,

£8,450 per month  
(£1,950 per week)

A rare opportunity to rent a unique and beautifully presented four bedroom townhouse in the heart of Westminster. A must-see property, finished to an impeccable standard throughout.

CHESTERTONS





# Horseferry Road

## Westminster 88 Horseferry Road,

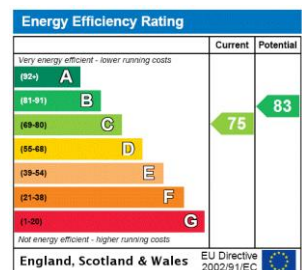
- A beautifully presented six bedrooms townhouse in the heart of Westminster.
- Finished to an impeccable standard throughout and beautifully furnished.
- 5 Bedrooms, 4 Bathrooms, 3 Reception Rooms, Kitchen, roof terrace.
- Located within short walking distance to Westminster, St James Park and Victoria stations.





A rare opportunity to rent a unique and beautifully presented five bedroom townhouse in the heart of Westminster. The property has been refurbished to a high standard and comprises a spacious entrance hallway leading to a large reception room with feature internal garden and a TV room/guest bedroom. Stairs lead down to a modern, fully fitted kitchen and dining area and guest apartment that could be used for a live-in nanny. The large master bedroom can be found on the first floor, boasting a beautiful bathroom, wet-room and private terrace. Two further bedrooms are located on the upper floor with en-suite and plenty of storage space. A must-see property, finished to an impeccable standard throughout, with the potential to alter certain living areas into bedrooms if necessary, to

**Minimum Term:** 6 months  
**Deposit Required:** £0.00  
**Local Authority:** City Of Westminster  
**Council Tax Band:** H  
**EPC Rating:** C  
**Furnished**

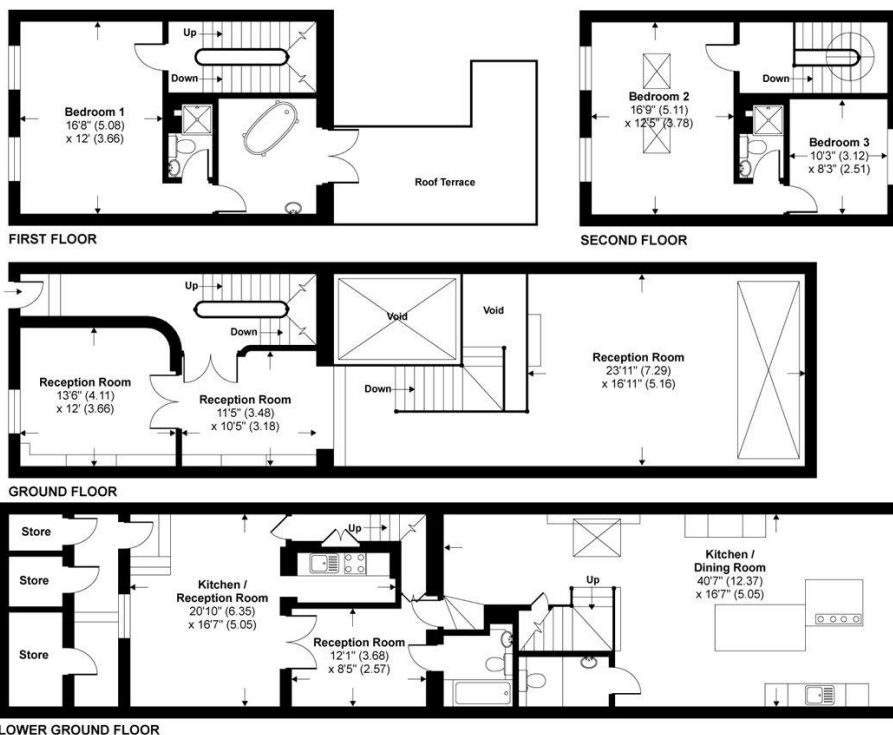


### Chestertons Westminster & Pimlico Lettings

105 Wilton Road  
 London  
 SW1V 1DZ  
 westminster@chestertons.co.uk  
 02030408220  
 chestertons.co.uk

Additional tenant charges apply (fees apply to non-AST tenancies only)  
 Tenancy Agreement Fee: £300  
 References per Tenant/Guarantor: £60  
 Inventory check (approx. £100 – £250 inc. VAT)  
 chestertons.co.uk/property-to-rent/applicable-fees

# Horseferry Road, London, SW1P



**TOTAL GROSS INTERNAL FLOOR AREA 3236 SQ FT 300.6 SQ METRES (EXCLUDES VOID)**

Whilst every attempt has been made to ensure the accuracy of the floor plan contained here, measurements of doors, windows and rooms are approximate and no responsibility is taken for any error, omission or misstatement. These plans are for representation purposes only as defined by RICS Code of Measuring Practice and should be used as such by any prospective purchaser. Specifically no guarantee is given on the total square footage of the property if quoted on this plan. Any figure given is for initial guidance only and should not be relied on as a basis of valuation.

Copyright nichecom.co.uk 2015 Produced for Chesterton Humberts REF : 41931

