

CHESTERTONS





Adams Row

Mayfair, W1K 2LA

“A stunning Mews House just off South Audley Street and the Mayfair village is this exceptional four bedroom, with terrace and garage spanning almost 4,000 sqft.”

Long let: £10,000 per week / £43,333.33 per month

4



3



3,927
sqft





Property Description

Adams Row has beautifully arranged living space across four meticulously designed floors. The property effortlessly fuses modern luxury with the character of its traditional façade.

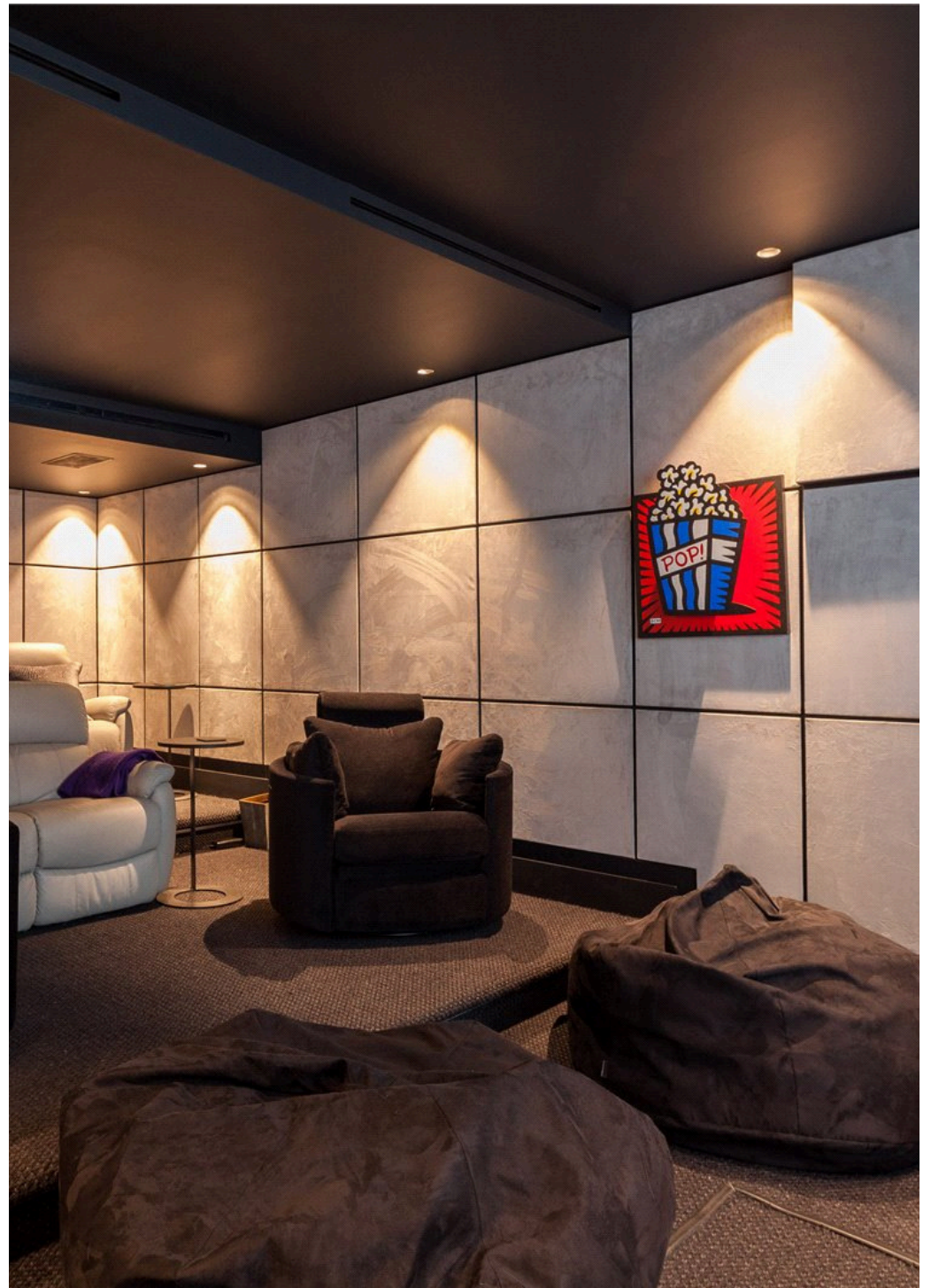
Upon entering, you're welcomed into a spacious double reception room that seamlessly connects to a bespoke kitchen and breakfast area, outfitted with top-of-the-line appliances, a pizza oven, and a retractable skylight that floods the space with natural light and provides a unique indoor-outdoor ambiance.

The lower ground floor is dedicated to leisure and functionality, featuring a state-of-the-art cinema room with a stylish wine display, a fully equipped gym, steam room, utility area, integrated Sonos sound system, and comprehensive air conditioning.

Occupying an entire floor, the principal suite offers a peaceful retreat with an open-plan en suite bathroom, a large walk-in shower, feature fireplace, and access to a private terrace adorned with a living wall. Three additional double bedrooms-each with its own en suite bathroom-are situated on the uppermost floor.

Completing the home is a secure double garage with car lift, a separate plant room, and generous storage throughout.



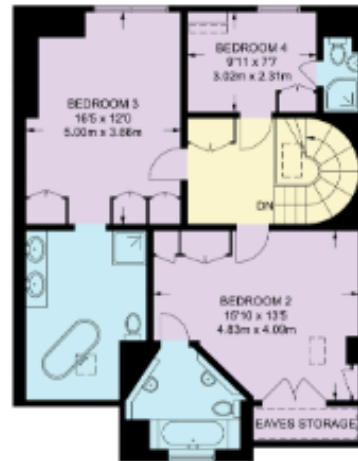




APPROXIMATE FLOOR AREA
(INCLUDING GARAGE & REDUCED HEADROOM & EAVES STORAGE)
3927 SQ FT / 364.83 SQ M
(EXCLUDING GARAGE & REDUCED HEADROOM & EAVES STORAGE)
3666 SQ FT / 340.58 SQ M



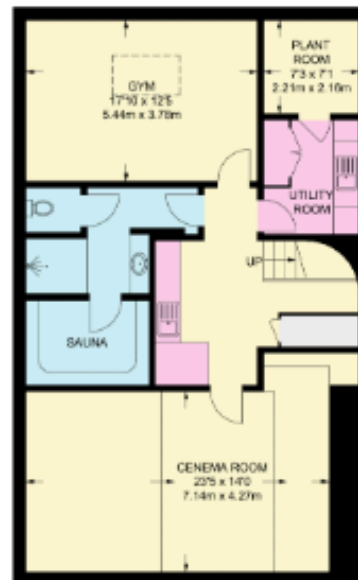
□ = REDUCE HEAD HEIGHT BELOW LPM



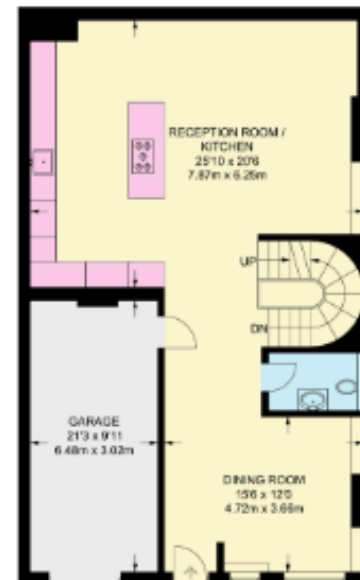
SECOND FLOOR
737 SQ FT / 68.5 SQ M



FIRST FLOOR
987 SQ FT / 91.7 SQ M



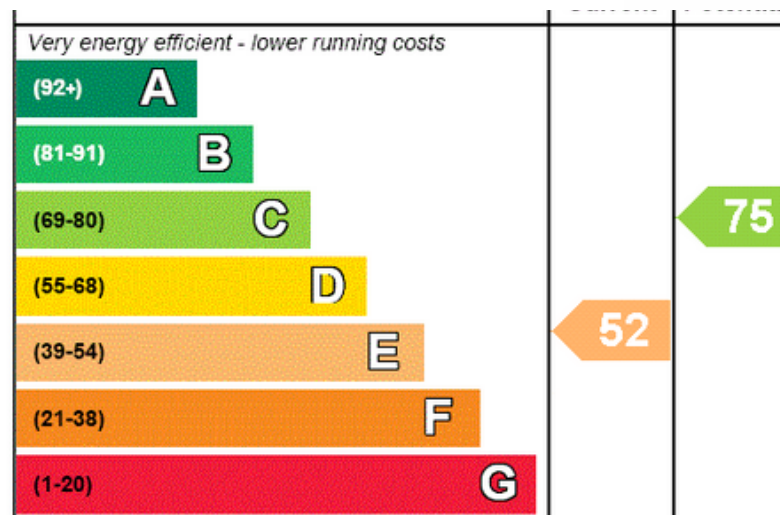
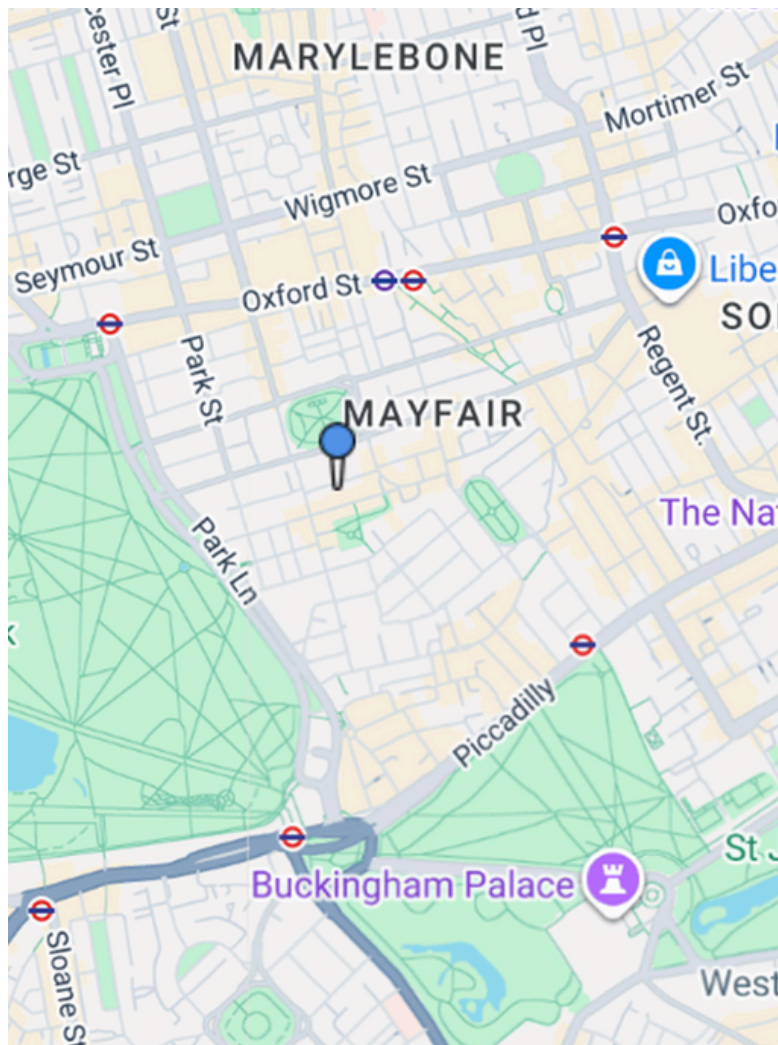
LOWER GROUND FLOOR
1099 SQ FT / 102.13 SQ M



GROUND FLOOR
1103 SQ FT / 102.5 SQ M

Property Location

CHESTERTONS



Additional tenant charges apply (fees apply to non-AST tenancies only)

Tenancy Agreement Fee: £300

References per Tenant/Guarantor: £60

Inventory check (approx. £100 – £250 inc. VAT)

[chestertons.co.uk/property-to-rent/applicable-fees](https://www.chestertons.co.uk/property-to-rent/applicable-fees)

Chestertons Mayfair

47 South Audley Street

London

W1K 2QA

[chestertons.co.uk](https://www.chestertons.co.uk)

Chesterton Global Ltd trading as Chestertons for themselves and for the vendor of this property whose agents they are, give notice that (i) these particulars do not constitute any part of an offer or contract, (ii) all statements contained within these particulars are made without responsibility on the part of Chestertons or the vendor, (iii) whilst made in good faith, none of the statements contained within these particulars are to be relied upon as a statement or representation of fact, (iv) any intending purchasers must satisfy themselves by inspection or otherwise as to the correctness of each of the statements contained within these particulars, (v) the vendor does not make or give either Chestertons or any person in their employment any authority to make or give representation or warranty whatsoever in relation to this property. Wide angle lenses may be used. ©Copyright Chestertons | Chesterton Global Ltd | Registered Office 40 Connaught Street, Hyde Park, London W2 2AB Registered Company Number 05334580.